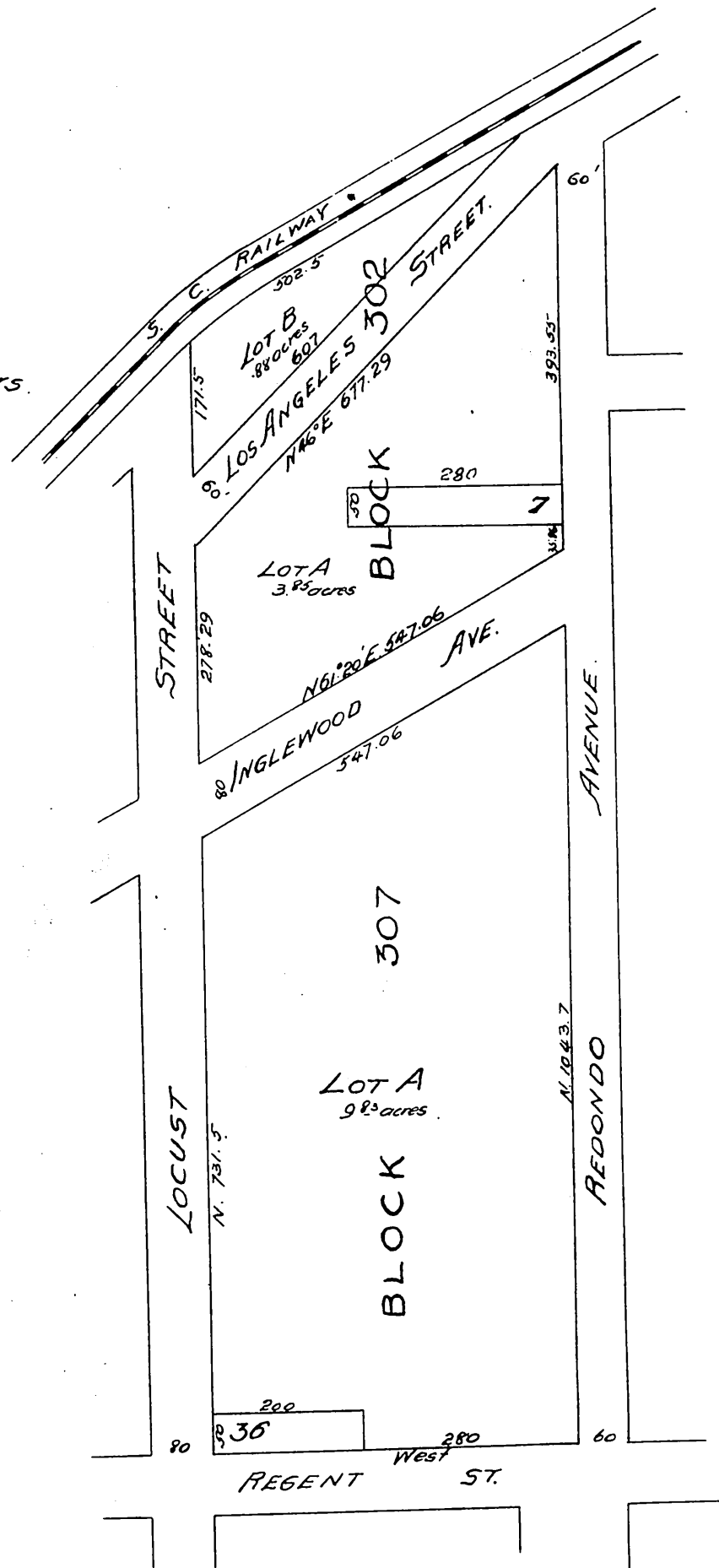


7241

Map showing  
Portion of Inglewood.  
After vacation by order of Board of Supervisors.

Scale 200'-1"



Cover: Grace E. D. Howland

A full true and correct copy of original  
Recorded Dec. 12. 1898 at 5 min. past 12 M.  
at request of C. H. Howland.  
E. C. Hodgman, County Recorder.

By E. T. Wright,  
C. Sur. and ex-officio Dep. Co. Rec.