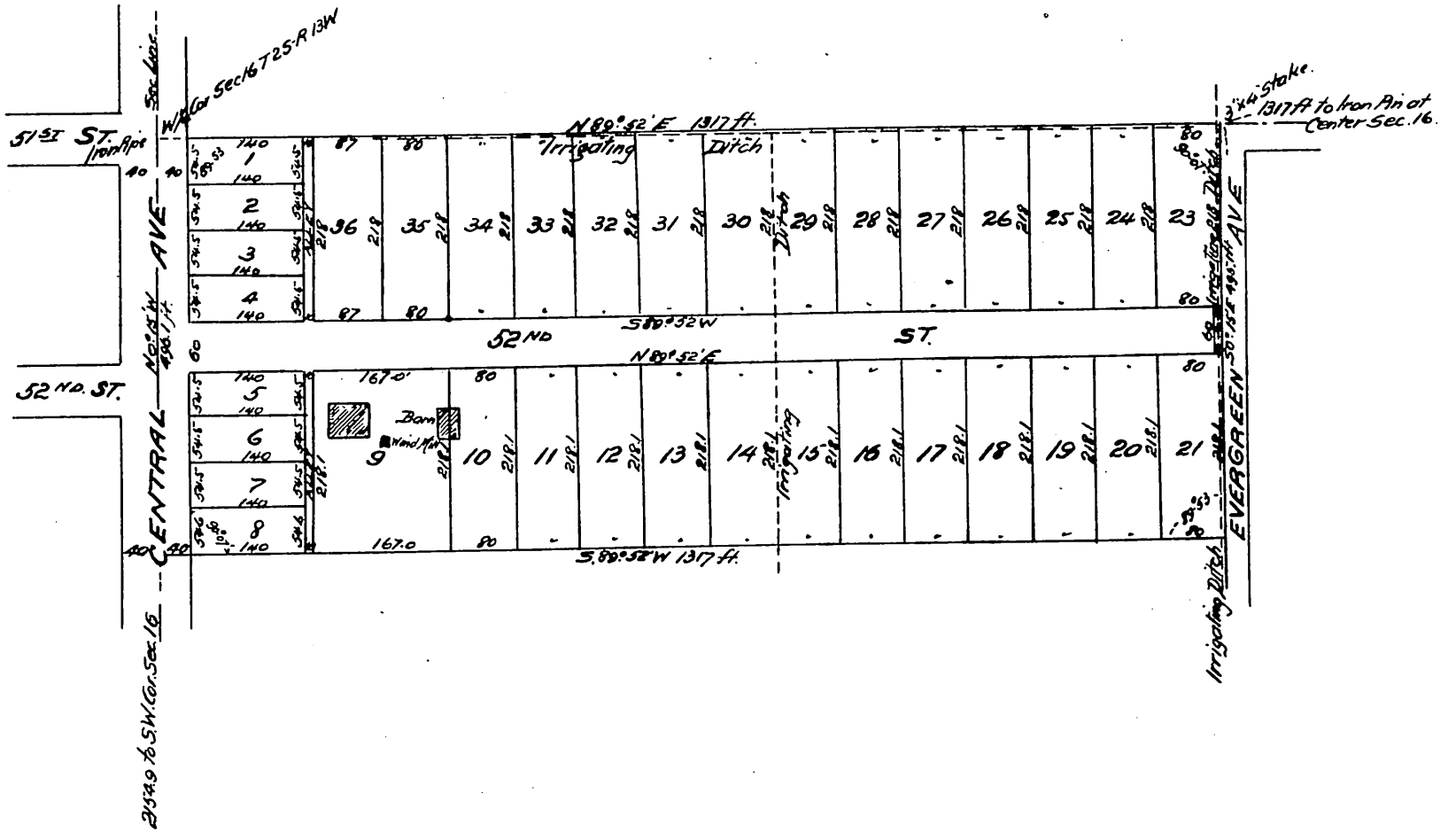


Map of
 O'Neil Place
 Los Angeles, California
 Being a Subdivision of the North 15
 Acres of the N.W. 1/4 of the S.W. 1/4 of
 Sec. 16 T25. R13W. S.B.M.
 Scale 1"=100ft.

True courses given. Surveyed Dec 17-1898
 2x2 stakes at lot corners. By Fremont Ackerman C.E.



Corners: Thos. H. O'Neil

A full true and correct copy of the original
 (Scale reduced to 200 feet to one inch)
 Recorded Dec. 21 1898 at 28 Min. past 3 P.M.
 at request of Thos. H. O'Neil
 E.C. Hodgman County Recorder.
 By Jos. H. Smith.
 Co. Sur. and ex-officio Dep. Co. Rec.