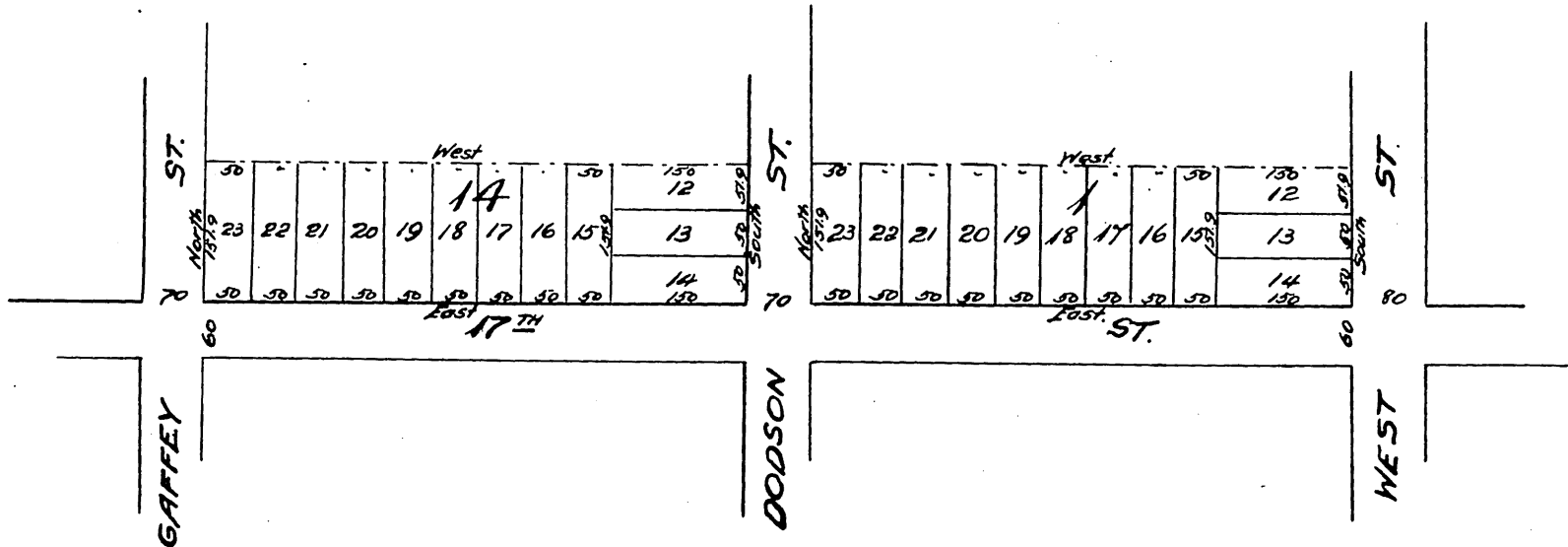


Leo's Subdivision  
of Blocks 1 and 14 of the Carolina Tract.  
San Pedro.



Proprietor. John Leo.

A full, true and correct copy of the original  
Recorded Dec. 21-1898 at 40 Min. past 3 P.M.  
at request of Ed. Emer.  
(Scale reduced to 200ft to one inch.

E.C. Hodgman County Recorder

By Jos. H. Smith.

Co. Sur. and ex-officio Dep. Co. Rec.