

# Map of the Brown and Hare Resubdivision of Lots 9, 10, 19 & 20 in Block 10 of the Woolen Mill Tract.

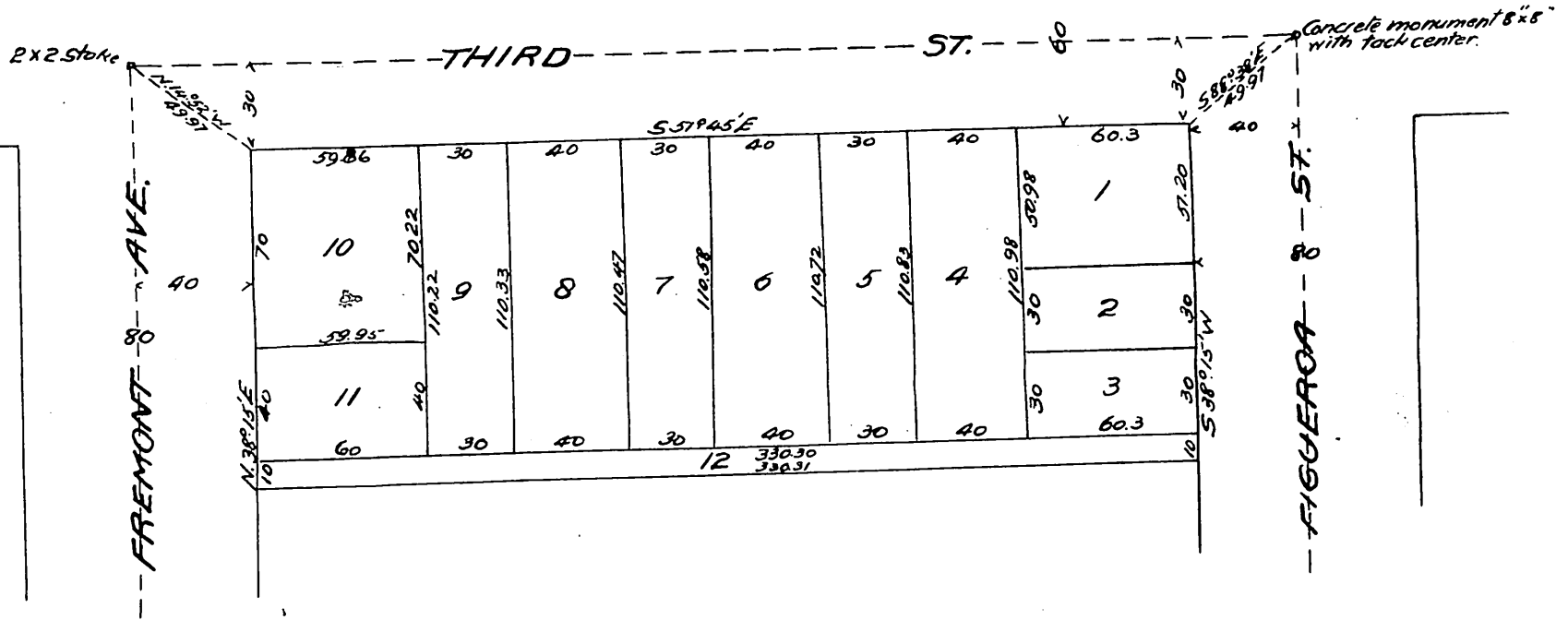
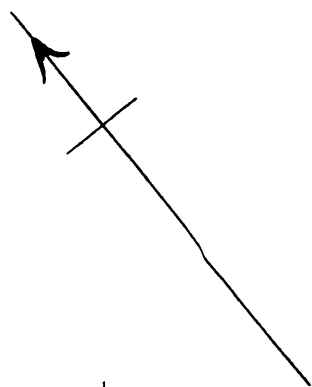
In the City of Los Angeles, Cal.

True Courses.

Scale 50 feet to one inch.

Goldsworthy & Wheeler Surveyors.

Dec. 22<sup>d</sup> 1898.



Owners: *Wm. P. Brown.*  
*David Hare.*

*A full true and correct copy of the original  
(Scale reduced to 60 feet to one inch)  
Recorded Dec. 31 1898 at 35 Min. past 3 P.M.  
at request of Wm. P. Brown.*

*E. A. Hodgman County Recorder.*

By *Jos. H. Smith.*  
*Co. Sur. & ex officio Dep. Co. Rec.*