

Map of the Rindge Tract.

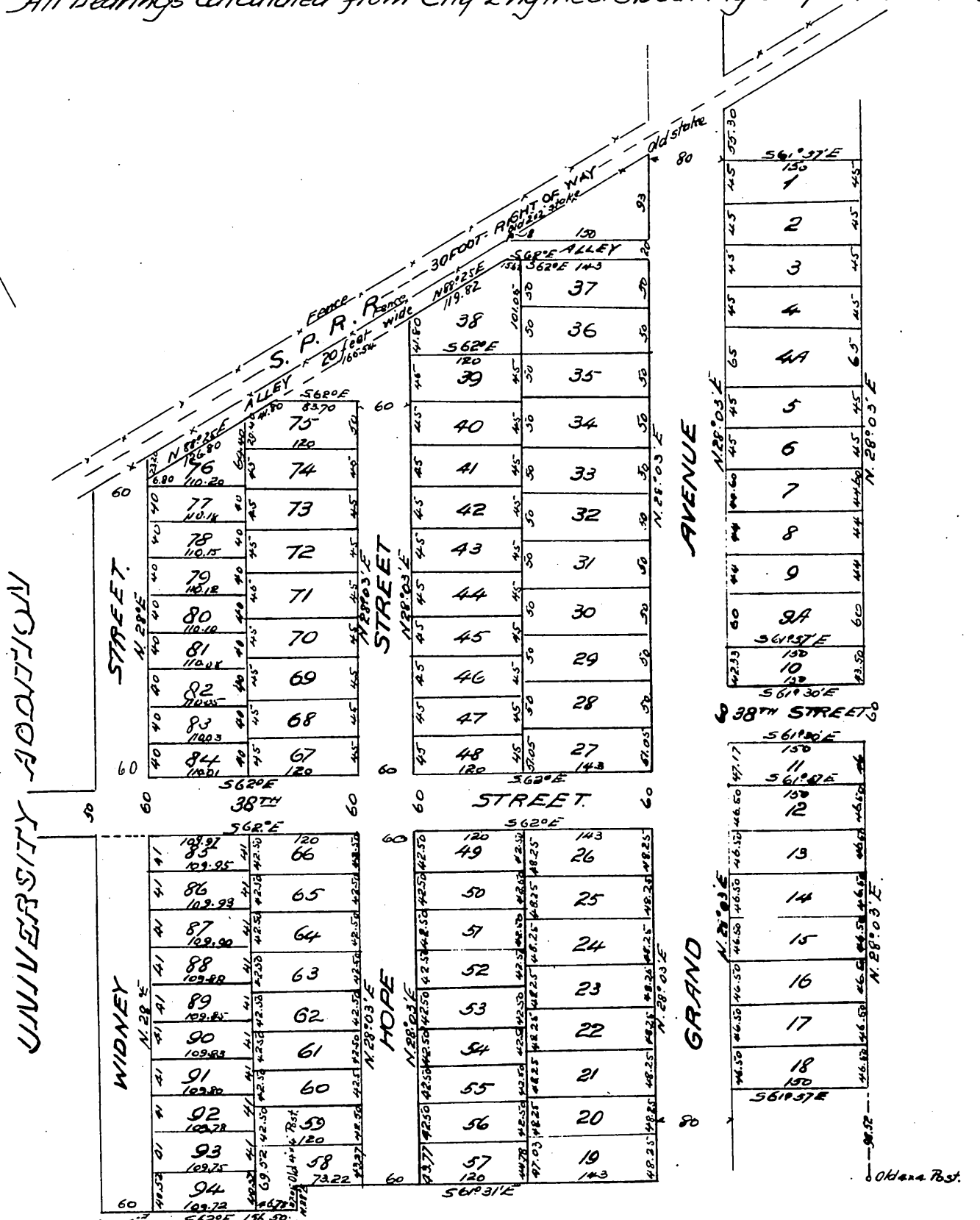
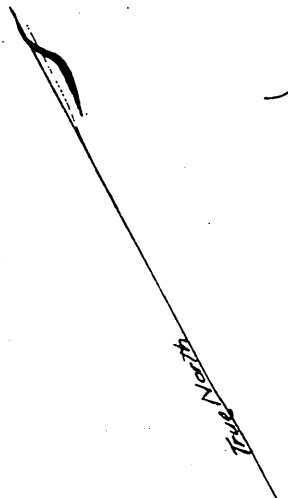
located in the City of Los Angeles
County of Los Angeles State of California.

Surveyed December 1898 by V. J. Rowan Surveyor.

Scale 100 feet to one inch.

True Courses-Variation 14° 30' East.

All bearings calculated from City Engineers bearing of Grand Avenue.



SW Cor. of Lot 44 University Addition

Owners:- Frederick H. Rindge.
Iowa A. Beckett.
Thos. G. Hutchinson.

A full, true and correct copy of the original
(Scale reduced to 150 feet to one inch)
Recorded Feb 2, 1899 at 30 Min. past 10 A.M.
at request of F.H. Rindge
A.D. Wade County Recorder.

By Jos. H. Smith
Co. Sur. and by office Dep. G. R. e.