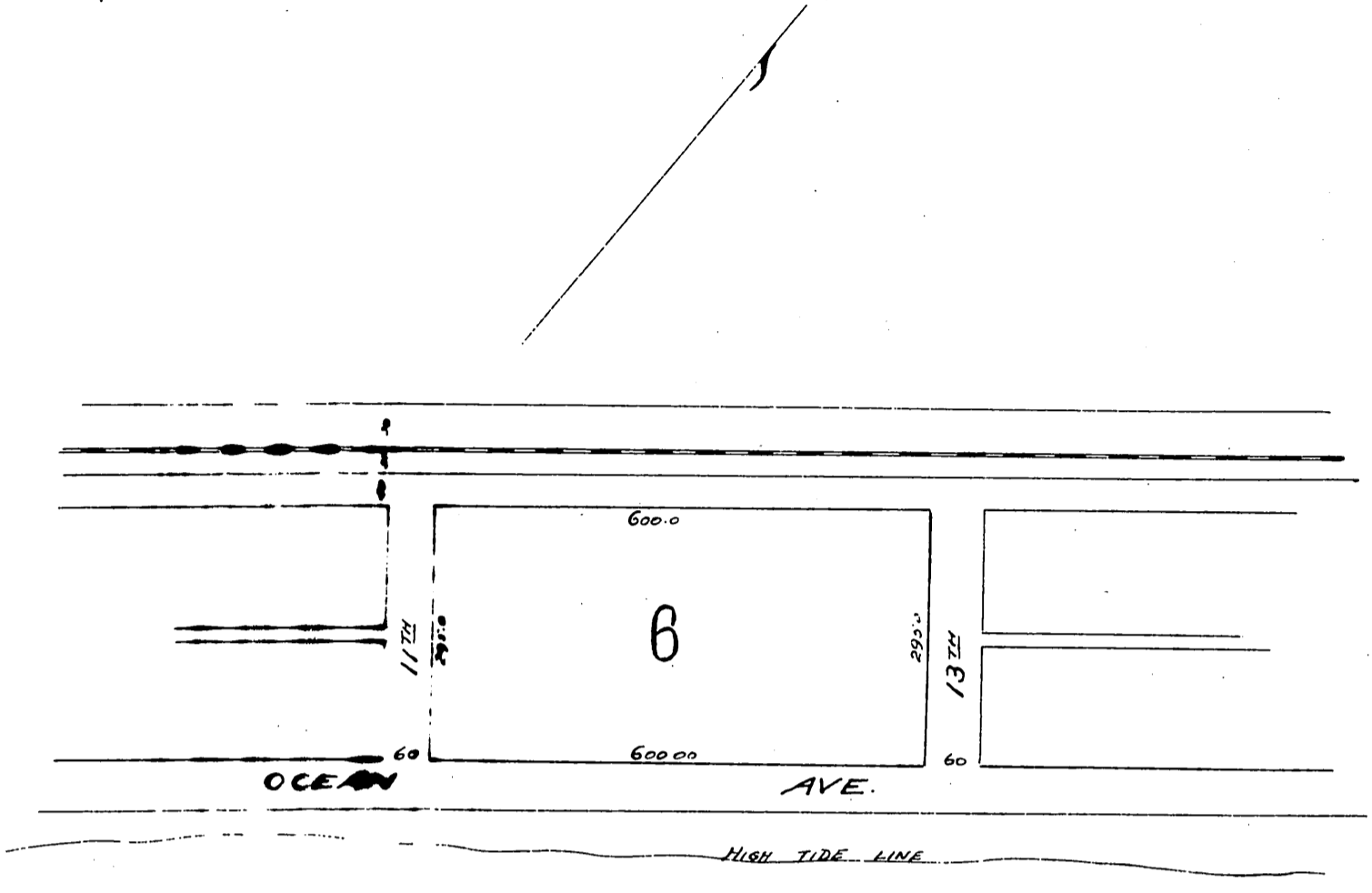


Block 6
 East San Pedro
 as per Misc. Records Book 52 Page 13
 Showing vacation of lots and alley
 Scale 200' = 1"



We hereby certify that we are the proprietors of the property subdivided as shown by this map, and further that we caused such subdivision and map to be made and dedicated for public use to the streets and alleys as shown on this map.

Los Angeles Terminal Land Co.
 By *Ford. H. Rule* - Vice Pres.
W. H. Pickering - Secretary.