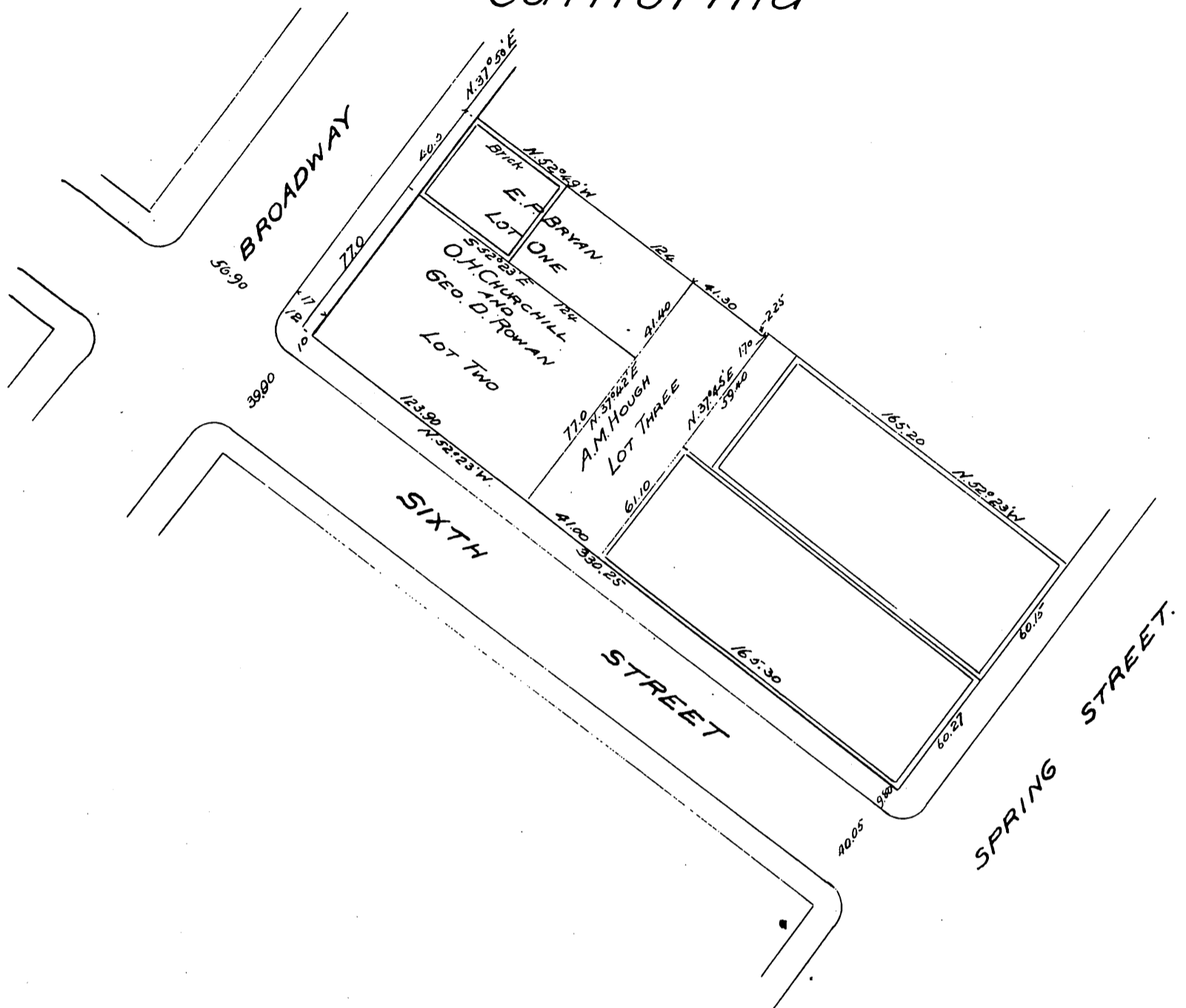


A Subdivision of a portion of
 Block 13 Ord's Survey
 Los Angeles City.
 California



Owners: O. H. Churchill.
 E. F. Bryan.
 Geo. D. Rowan.
 A. M. Hough.

A full, true and correct copy of the original
 (Scale reduced to 60 feet to one inch)
 Recorded May 6-1899 at 32 Min. past 11 A.M.
 at request of T. I and T. Co.

R.D. Wade - County Recorder.

By Jos. H. Smith.

Co. Sur. and ex-officio Dep. Co. Rec.