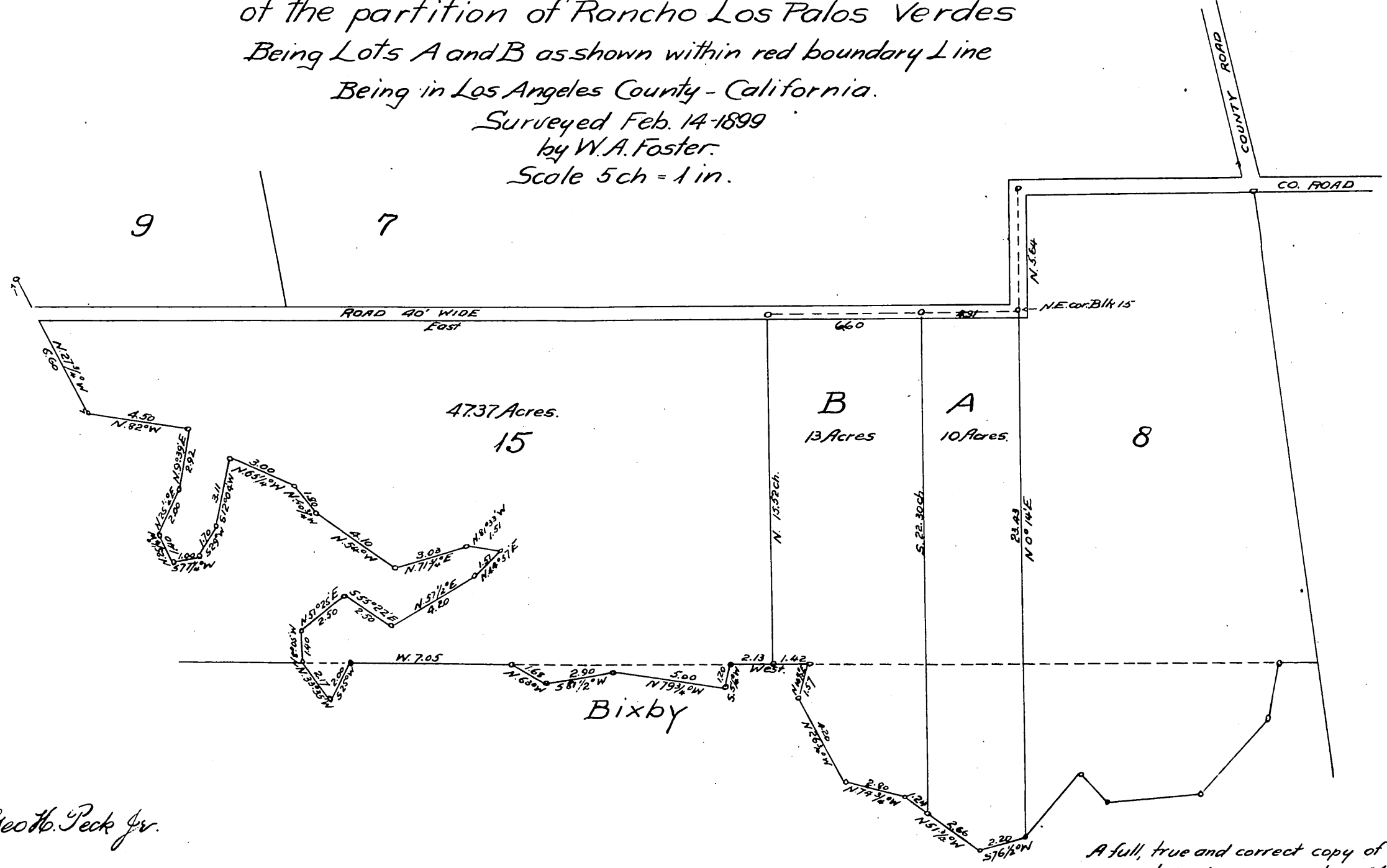
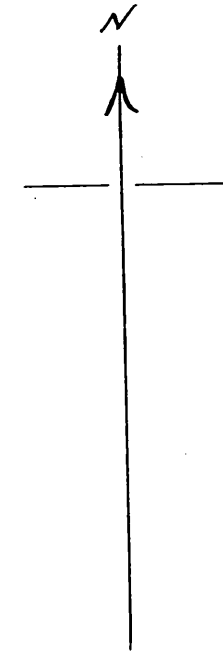


Map of  
 Subdivision of Block 15  
 Peck's Subdivision of Lot J and portion of Lot H  
 of the partition of Rancho Los Palos Verdes  
 Being Lots A and B as shown within red boundary line  
 Being in Los Angeles County - California.

Surveyed Feb. 14-1899  
 by W.A. Foster.  
 Scale 5ch = 1 in.



Owner:- Geo H. Peck Jr.

A full, true and correct copy of the original  
 recorded May 12-1899 at 30 Min. past 11 A.M.  
 at request of Geo H. Peck Jr.  
 R. D. Wade, County Recorder.

By Jrs. H. Smith.  
 Co. Sur. and officio Dep. Co. Rec.

