

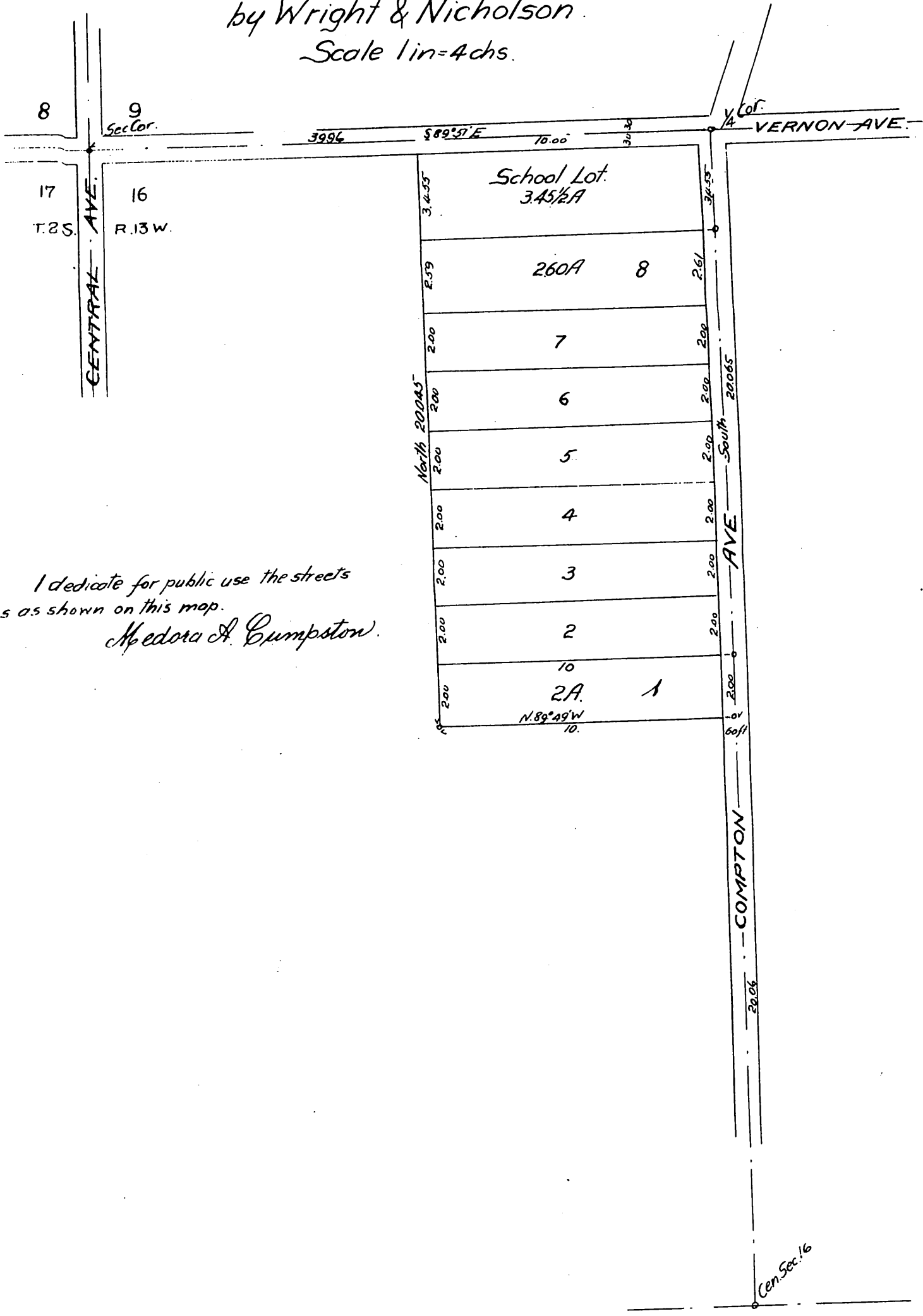


Map of Cumpston Tract Surveyed for Mrs. Cumpston.

Nov. 14-1898

by Wright & Nicholson.

Scale 1 in = 4 chs.



I dedicate for public use the streets
and alleys as shown on this map.
Medora A. Cumpston.

A full, true and correct copy of the original
Recorded Jun. 12-1899 at 7 Min. past 4 P.M.
at request of W.B. Scarborough.
R.D. Wade - County Recorder.

By Jos. H. Smith
Co. Sur. and ex-officio Dep. Co. Rec.