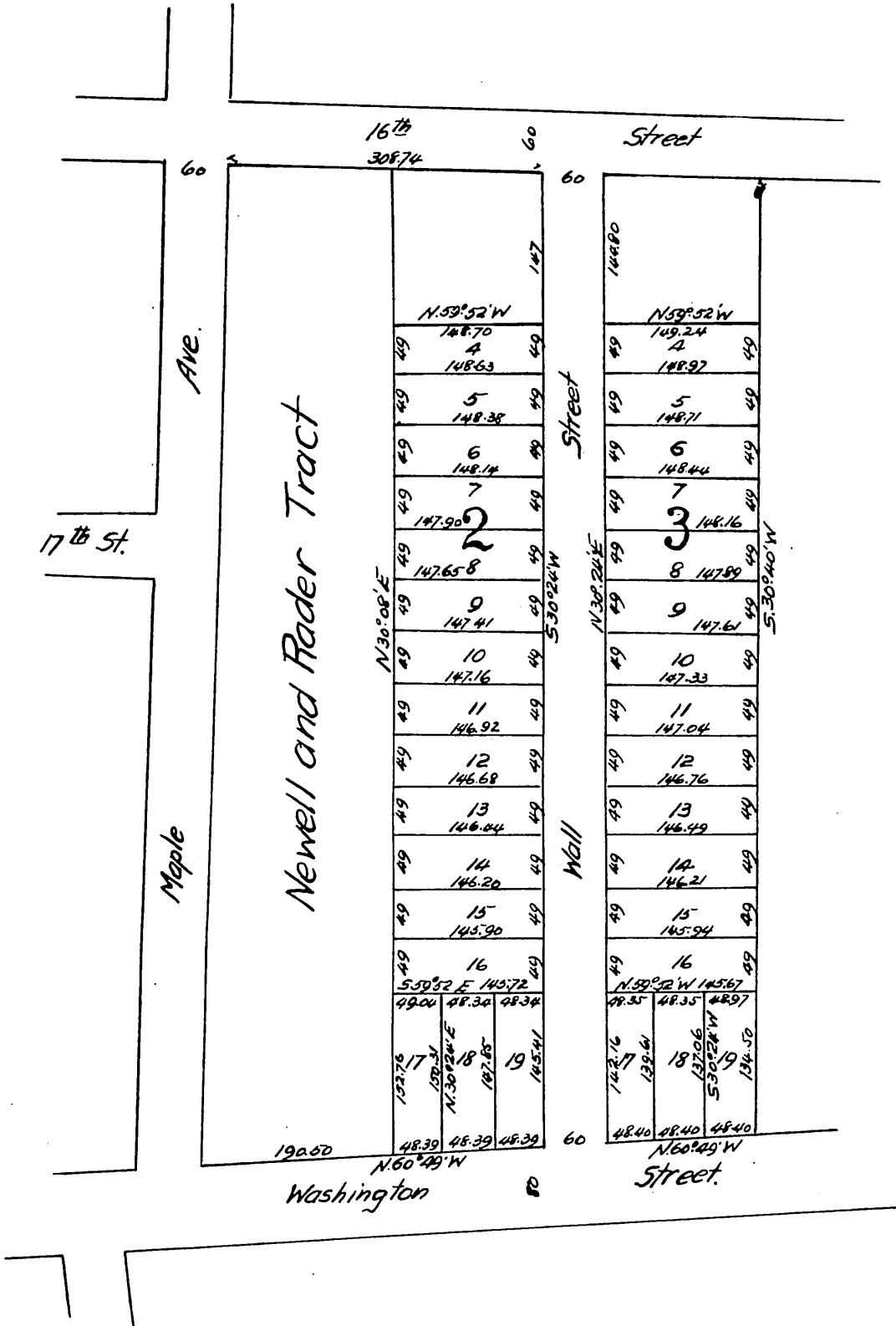




Hellman's 16th Street Subdivision
 being portions of Blocks 2 & 3
 Surveyed March 1896
 by Wright & Nicholson.
 Scale 100' = 1"



I dedicate for public use the streets and alleys as shown on this map.

Isaias W. Hellman.

A full true and correct copy of the original
 (Scale reduced to 150 feet to one inch)
 Recorded Jul. 17-1899 at 45 Min. past 10 A.M.
 at request of P.A. Stanton Agt

R.D. Wade - County Recorder.

By Jos. H. Smith.
 Co. Sur. and ex-officio Dep. Co. Rec.