

Replat of

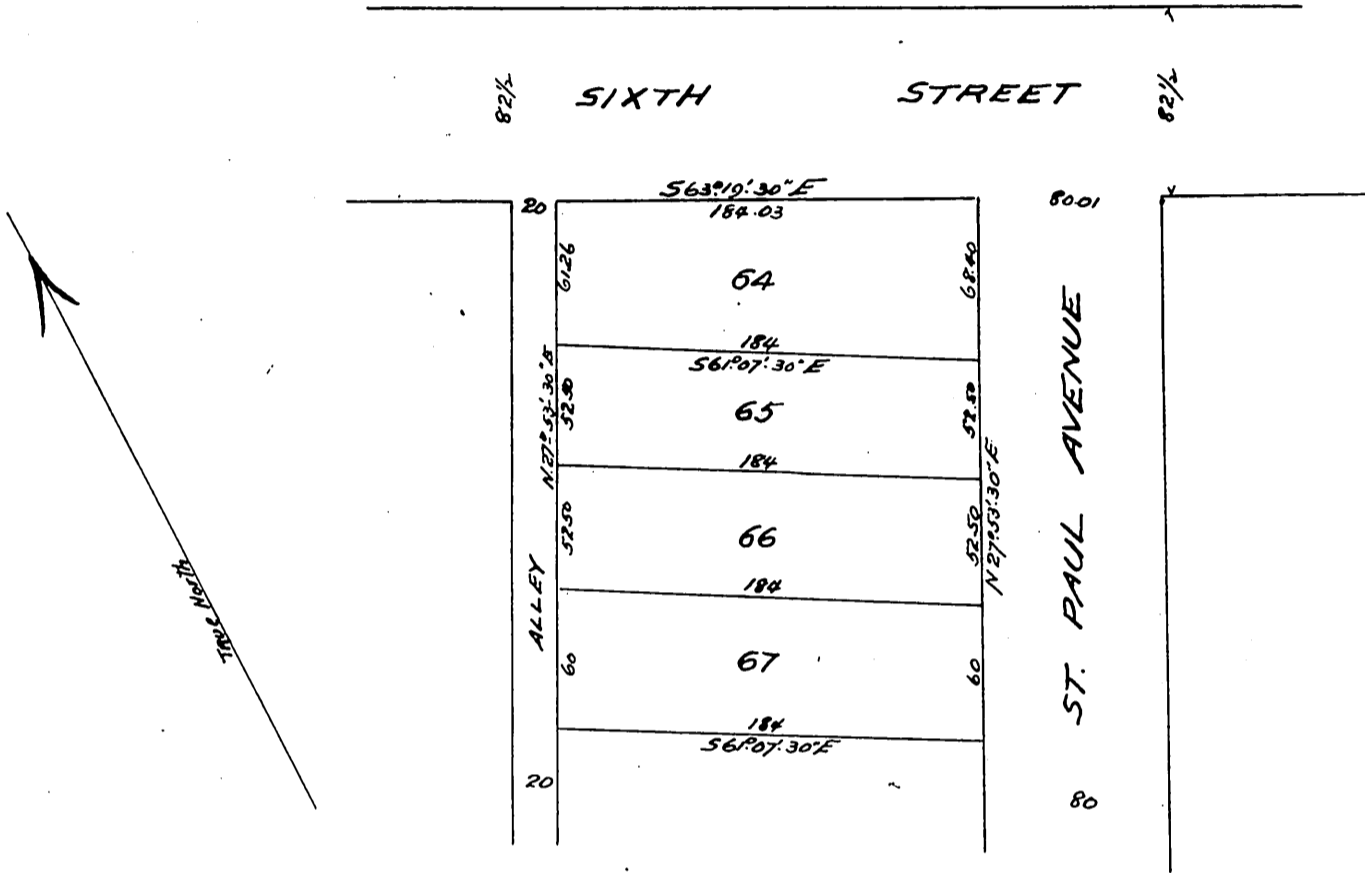
Lots 64-65-66-67 and 67 1/2 of  
the subdivision of the lands of

# ST. PAULS SCHOOL

Situate in Lot 1 Block 37 Hancock's Survey  
City of Los Angeles, State of California.

Scale 60 feet to one inch.  
True Courses - Var. 14°30' East.

Platted by J. Rowan Surveyor  
August 1899



Owner: — St. Paul School of the County of Los Angeles  
 State of California - A Corporation.  
 By S. O. Houghton - its President  
 By H. T. Lee. its Secretary.

A full, true and correct copy of the original  
 (Scale reduced to 80 feet to one inch)  
 Recorded Aug 31-1899 at 30 Min. past 2 P.M.  
 at request of H. T. Lee

R. D. Wade County Recorder

By Jos. H. Smith.  
 Co. Sur. and ex-officio Dep. Co. Rec.