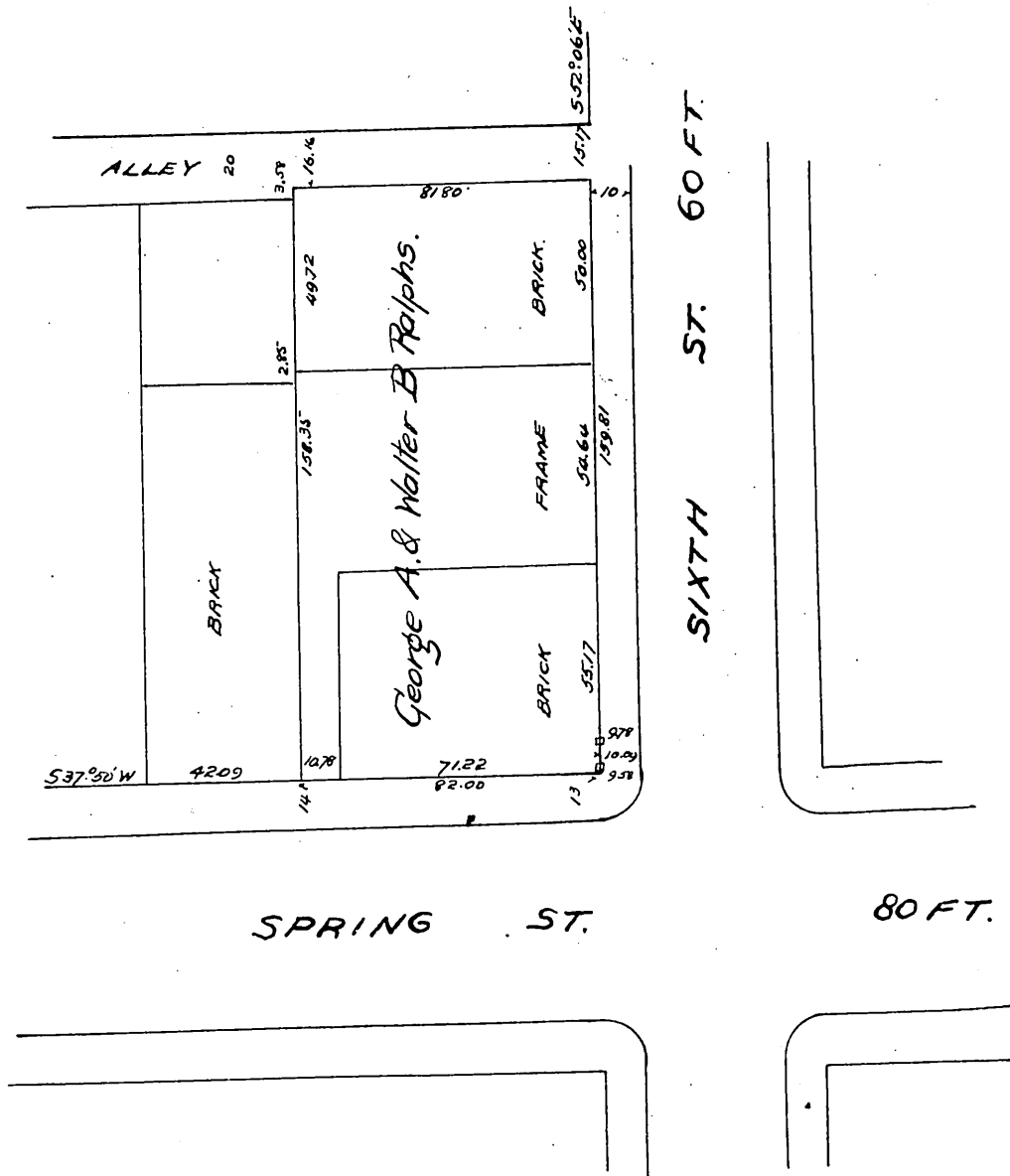


*Plat of  
George A. & Walter B. Ralphs Land  
Situate in the East part of  
Lot 5 Block 17- Ords Survey  
City of Los Angeles, Cal.*

*Scale 30 feet to 1 inch  
Surveyed Aug 11<sup>th</sup> 1899  
By Goldsworthy & Wheeler.  
Civil & Mining Engineers  
Los Angeles, Cal.*



*Owners: George A. Ralphs.  
Walter B. Ralphs.*

*A full, true and correct copy of the original  
(Scale reduced to 50 feet to one inch)  
Recorded Oct 4 1899 at 2 Min. past 10 A.M.  
at request of Ralphs Bros.  
R. D. Wade - County Recorder  
By Jos. H. Smith.  
Co. Sur. and ex-officio Dep. Co. Rec.*