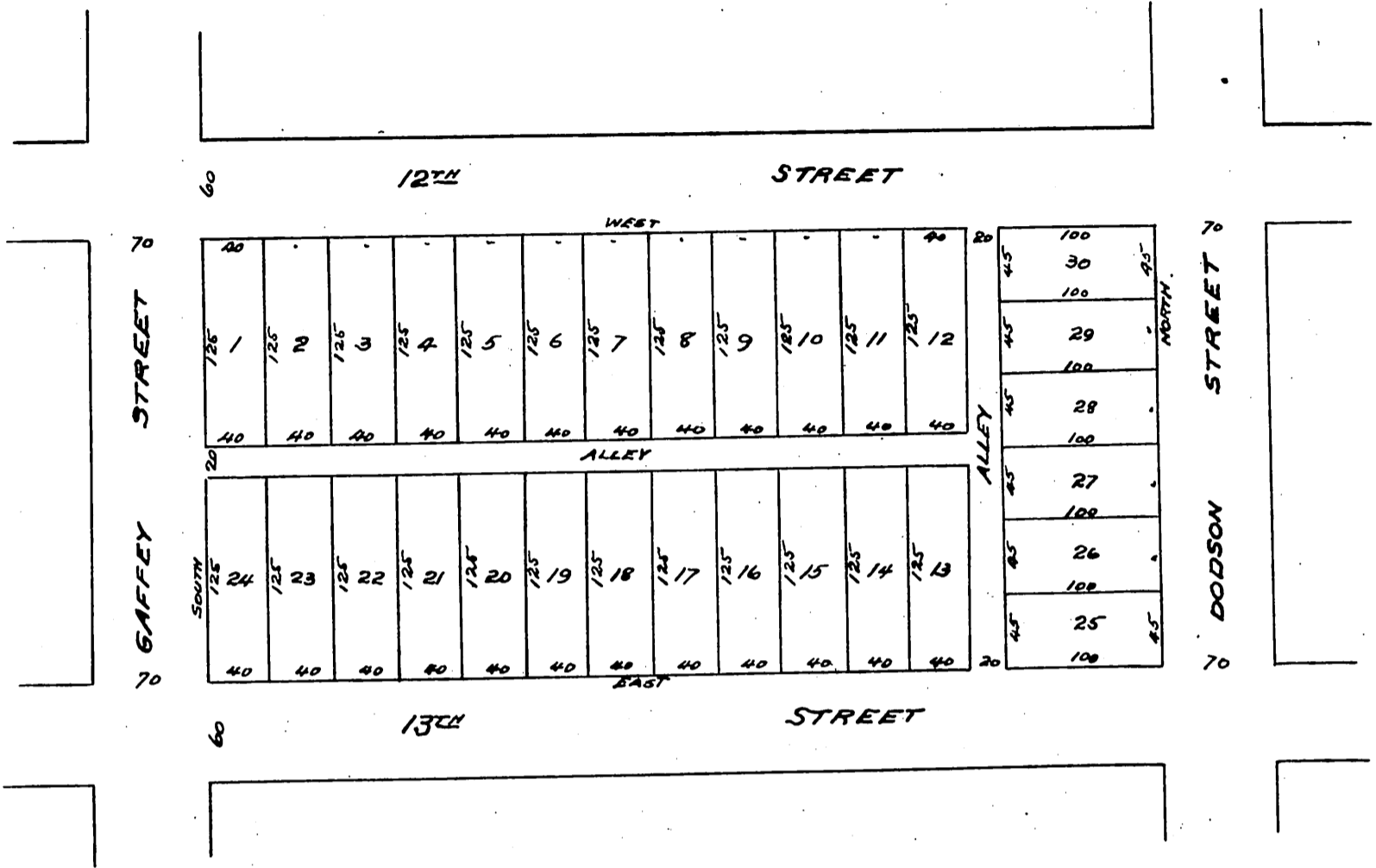




Clay's Subdivision
of Block 12 of the
Rudecinda Tract
Rancho Palos Verdes
Los Angeles Co. Cal.

74



I dedicated for
public use the streets and alleys as shown on this map.
Geo. H. Peck Jr. Owner.

A full, true and correct copy of the original
(Scale reduced to 100 feet to one inch)
Recorded Oct. 21-1899 at 35 Min. past 12 M.
at request of T. G. & T. Co

By *Jos. H. Smith.*
Co. Sur and up-officio Dep. Co. Rec.
F. D. Wade, Co. Recorder.