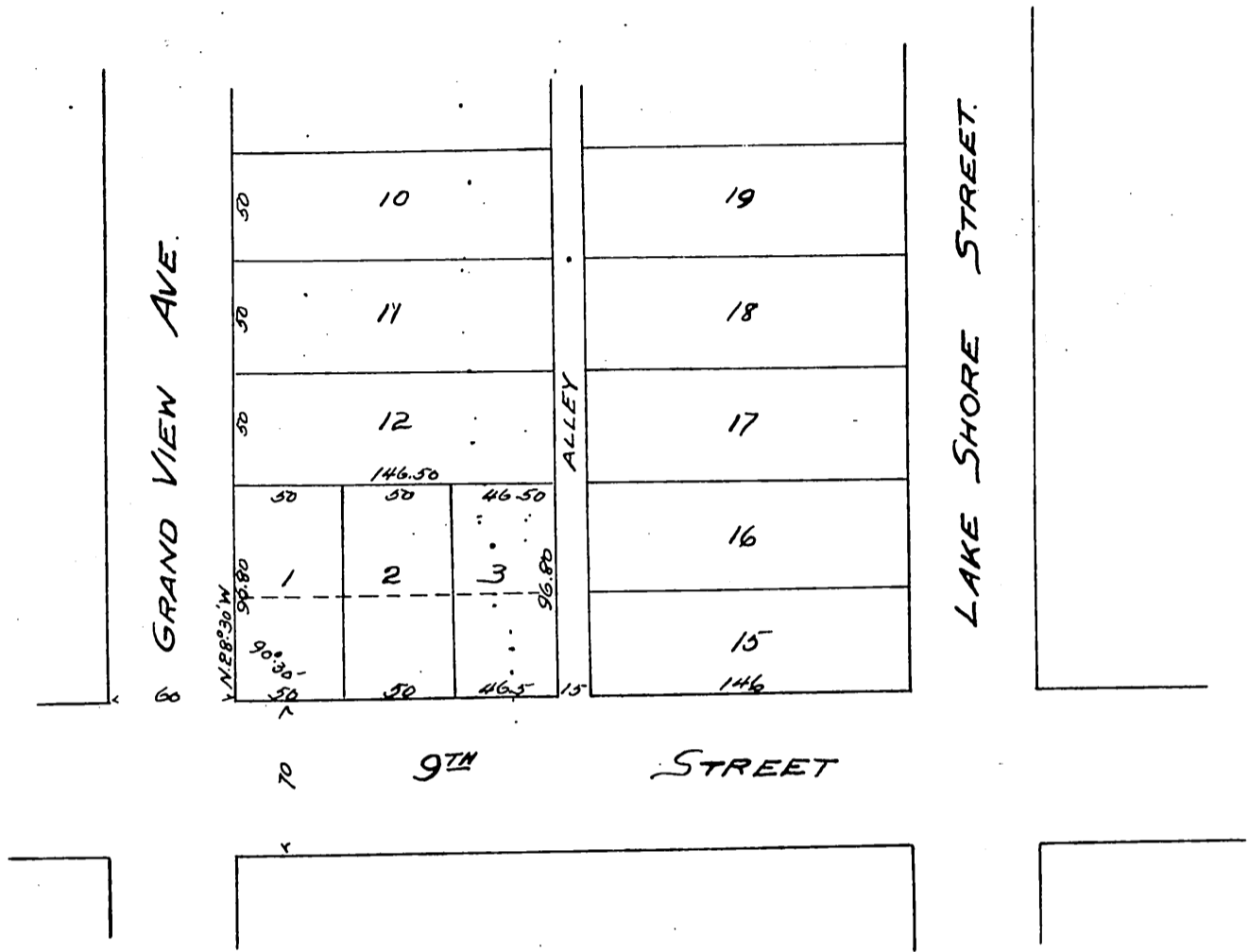


MAP OF
 Stimson's Subdivision
 of Lots 13 and 14 Block C
 Lake Shore Tract
 as per map recorded in Book 13 Page 29
 Miscellaneous Records
 of Los Angeles County California
 Scale 50 ft to 1 inch.



Owner: George W. Stimson.

A full true and correct copy of the original
 (Scale reduced to 80 feet to one inch)
 Recorded Dec. 28. 1899 at 30 Min. past 4 P.M.
 at request of Geo. W. Stimson.
 A. D. Wade. County Recorder.

By Jos. H. Smith

Co. Sur. and ex officio Dep. Co. Rec.