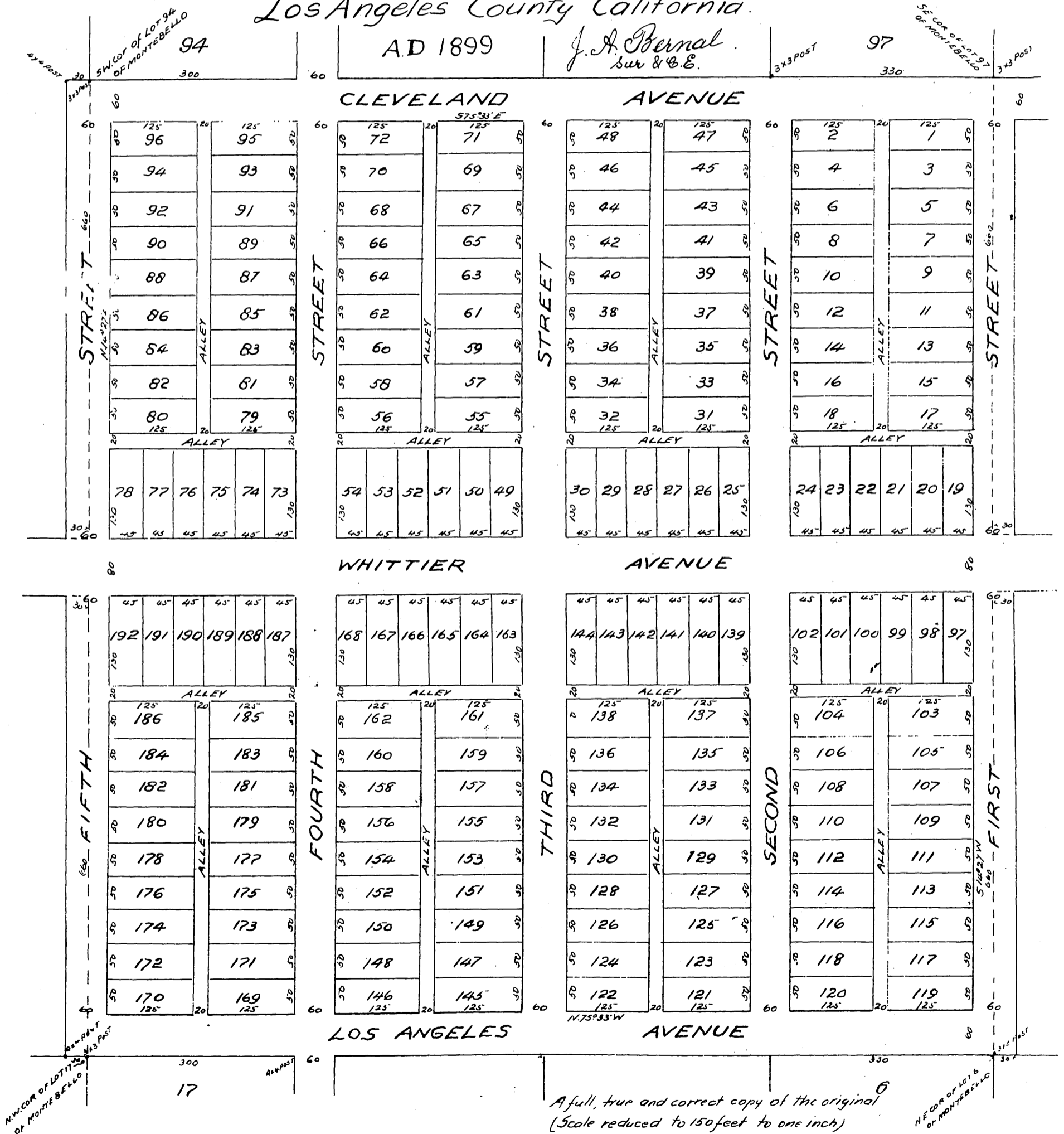


Map of the Town of Newmark.

Being included within the exterior lines of Montebello and being a portion of the Rancho San Antonio and of the land allotted to Harris Newmark by deed of partition between him and Isaias W. Hellman and John D. Bicknell and Stephen M. White Recorded in Book 759 of Deeds pages 14 et seq. County Recorder's Office Los Angeles County California.



A full, true and correct copy of the original
(Scale reduced to 150 feet to one inch)
Recorded Jan. 8, 1900 at 33 Min past 4 P.M.
at request of H. Newmark.

R. D. Wade County Recorder

By Jos. H. Smith
Co. Sur. and ex-officio Dep. Co. Rec

Scale 60 feet to 1 inch.