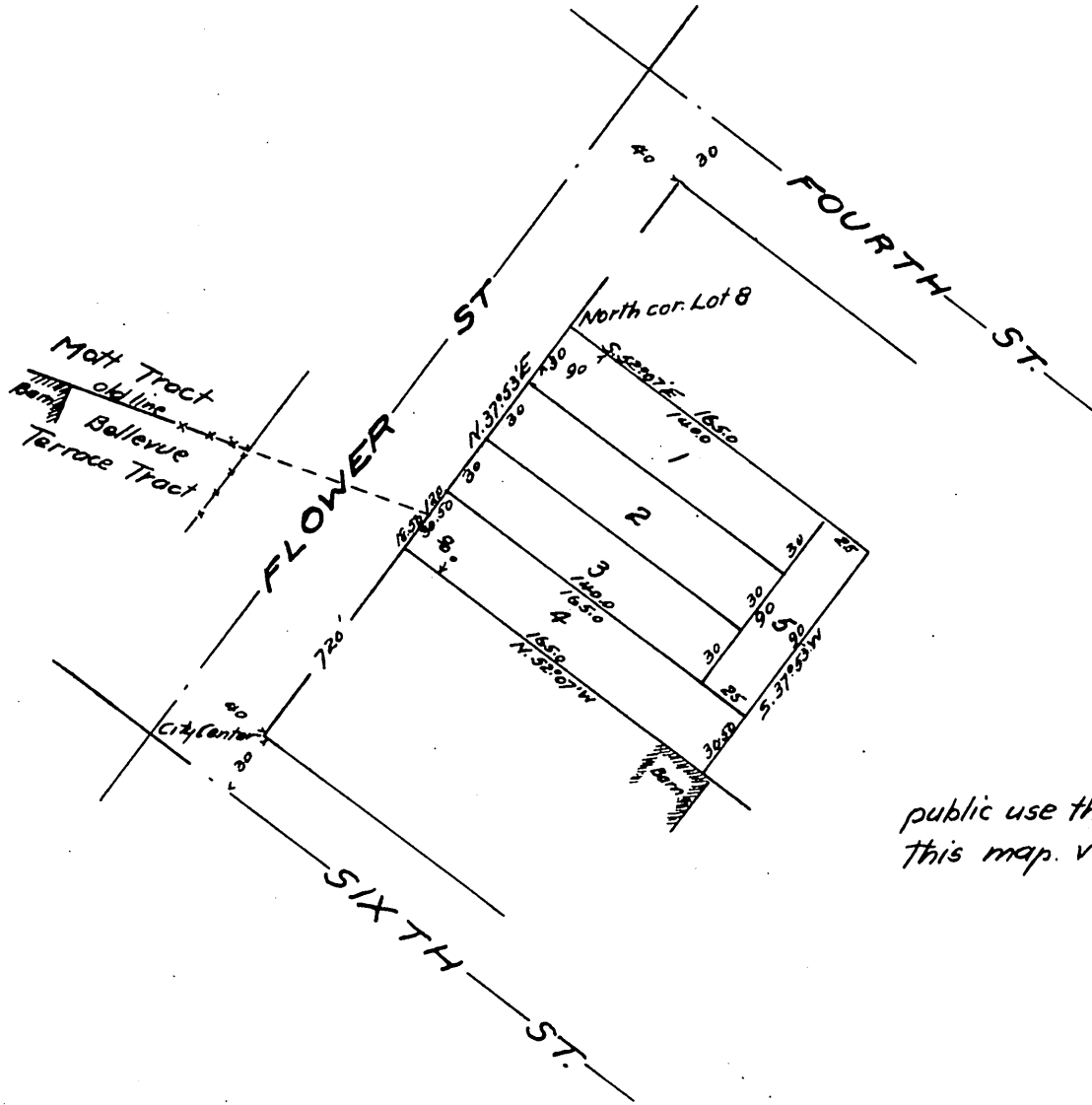

 A. G. Newton's Subdivision
 of Lot 8 BIK 'T' Mott Tract
 and
 Lot 12 BIK 109 Bellevue Terrace Tract
 Subdivided Mar. 25-99.
 by Wright & Nicholson
 Scale 40 Ft.

6



I dedicate for public use the streets and alleys as shown on this map. vis: - Lots 1-2-3 and 5 of said map.
 Arthur G. Newton.

I dedicate for public use the streets and alleys as shown by this map vis: - Lot 4 of said map
 C. V. Baldwin.

A full, true and correct copy of the original
 (Scale reduced to 80 feet to one inch)
 Recorded Mar. 30. 1899 at 17 Min past 11 AM.
 at request of A. G. Newton.

R. D. Wade - County Recorder.

By Jos. H. Smith.
 Co. Sur. and ex-officio Dep. Co. Rec.

78