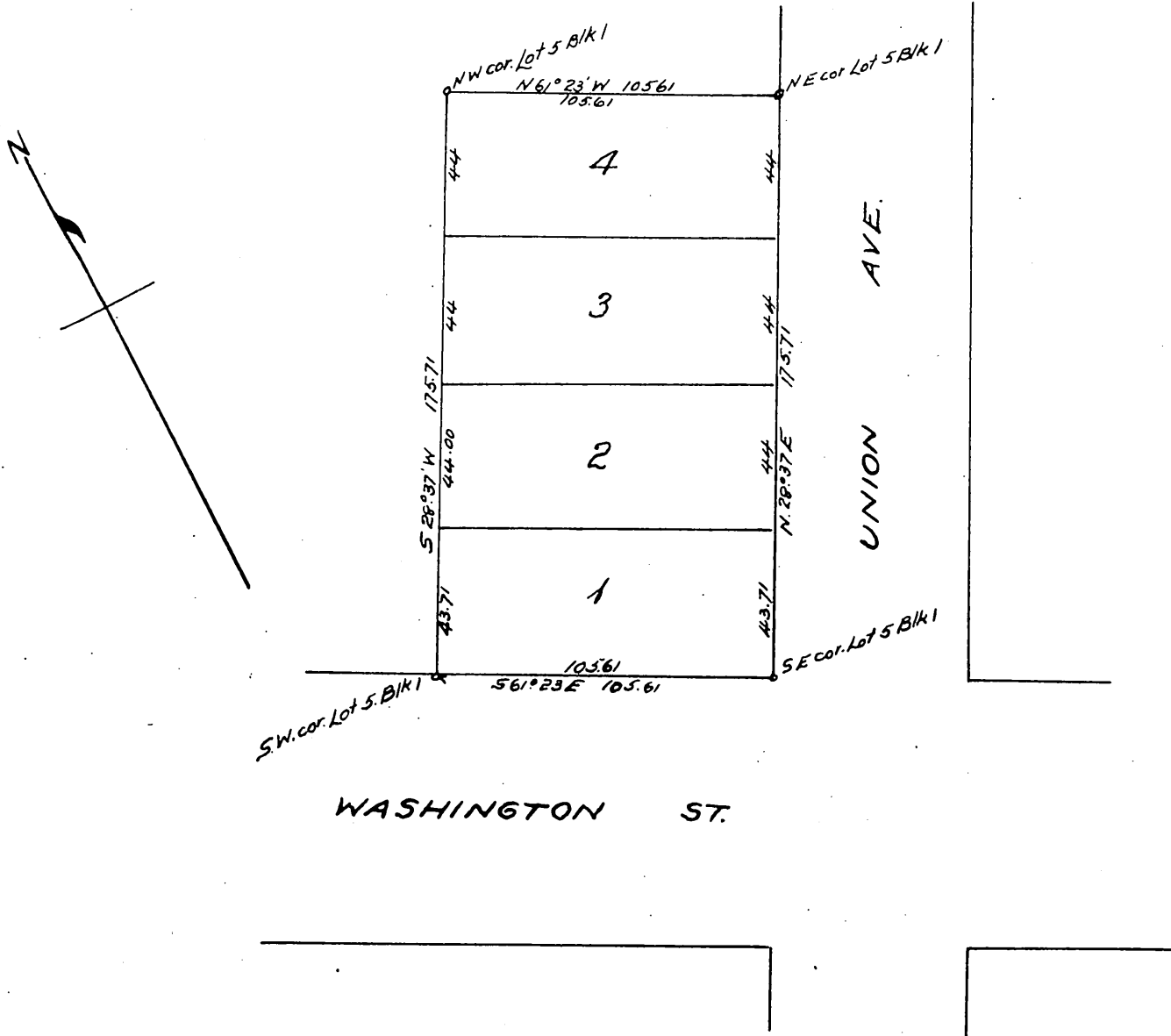




Map showing  
 Pulman's Subdivision  
 of Lot 5 Block 1 of  
 Los Angeles Homestead Tract  
 Los Angeles, Cal.  
 Surveyed April 4<sup>th</sup> 1899 By Skinner & Miller.  
 Scale 30ft = 1 in.



Owners:- P. W. Prindexter  
 J. S. Wadsworth.

A full, true and correct copy of the original  
 (Scale reduced to 50 feet to one inch)  
 Recorded April 4-1899 at 40 Min. past 4 P.M.  
 at request of Prindexter and Wadsworth.  
 R. D. Wade - County Recorder

By Jos. H. Smith

Co. Sur. and ex-officio Dep. Co. Rec.