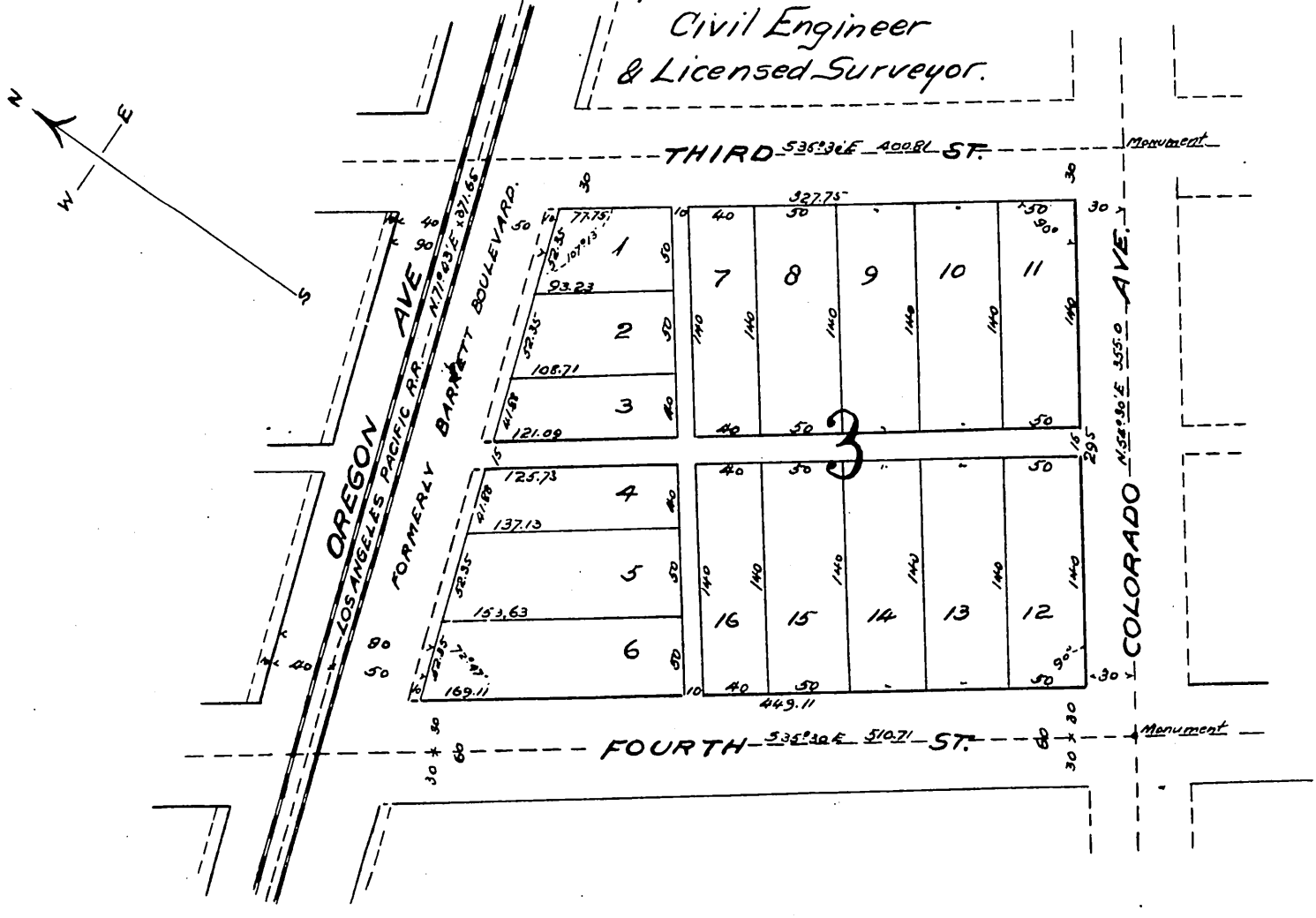


Map showing
A Subdivision of Block 3
of the
Barrett-Villa Tract.

To which reference is hereby made
in Vol. 70 Pages 32-35 Miscellaneous Records.
Situated in the Rancho San Vicente y Santa Monica
Los Angeles County, State of California.
Made at the request of the Pacific Land Company.
Scale 1 in = 50 ft.

Surveyed October 19th 1899
by Thos. H. James.

Civil Engineer
& Licensed Surveyor.



Owners:- Pacific Land Company - Santa Monica, California.
R. C. Gillis President.
Thos. P. Lowe. Secy.

A full, true and correct copy of the original
(Scale reduced to 100 feet to one inch)
Recorded Dec. 23-1899 at 51 Min. past 2 P.M.
at request of Bank of Santa Monica.
R. D. Wade. - County Recorder.

By J. H. Smith.
Co. Sur. ex-officio Dep. Co. Rec.