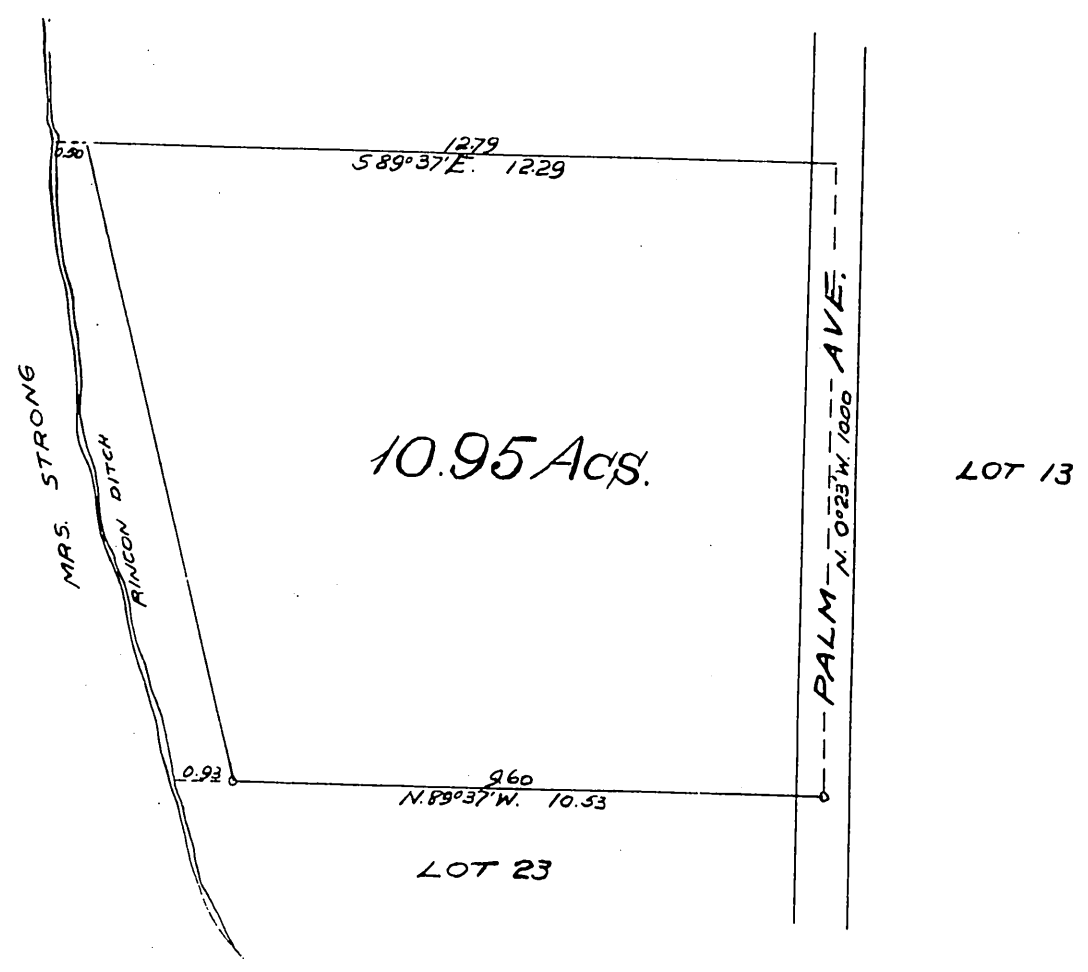


Map of a part of
 Lot 22 of West Whittier
 as shown on map of
 Cohn's Partition
 of a part of the
 Ro. Paso de Bartolo

Surveyed Jan. 16 1900
 By C.C. Brown.
 Scale 20 chs = 1 inch
 Variation N. 14° 30' E.



I dedicate for public use the streets and
 alleys as shown on this map.

Mrs Carrie Cahon
 By J. Cahon her attorney in fact.

A full, true and correct copy of the original
 (Scale reduced to 30 chs. to one inch)
 Recorded Jan. 26-1900 at 57 Min. past 10 A.M.
 at request of T.I. & T. Co.

R. D. Wade. County Recorder.
 By Jos. H. Smith.
 Co. Sur. and ex-officio Dep. Co. Rec.