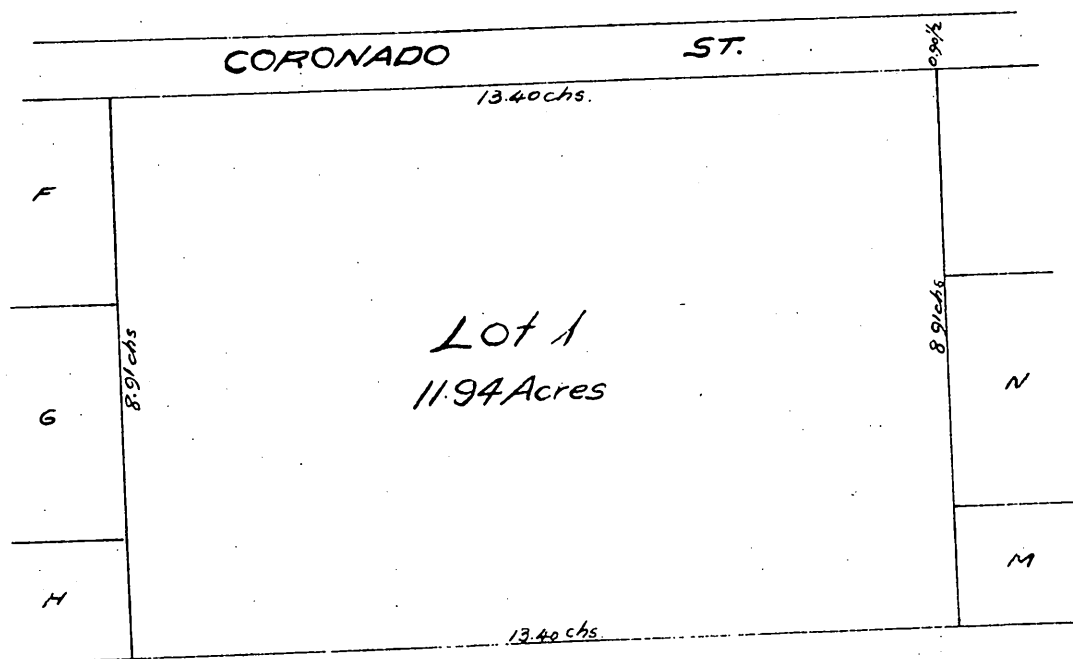
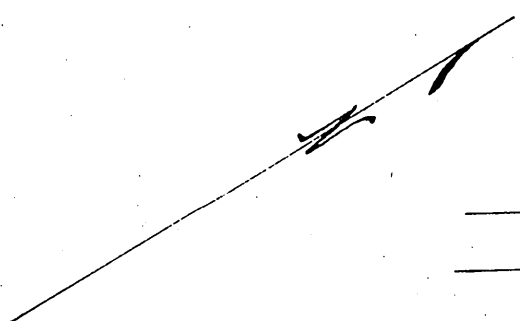


# Map of the C.G. Hewes Tract Los Angeles Co. Cal.

Being a replat of Blocks T, U, V, W, X & Y  
of the subdivision of Lot 7 Block 27  
and Lots 2 & 7 Block 26 Hancock Survey  
shown in Recorder's filed map #65.

Scale 1 in = 2 chs.



Owner C. G. Hewes.

A full, true and correct copy of the original  
(Scale reduced to 3 chs. to one inch)  
Recorded Feb 2, 1900 at 3:17 in past 3 PM.  
at request of C. G. Hewes.

R. D. Wade County Recorder

By Jos. H. Smith.  
Co. Sur. and Ex-officio Dep. Co. Rec.