

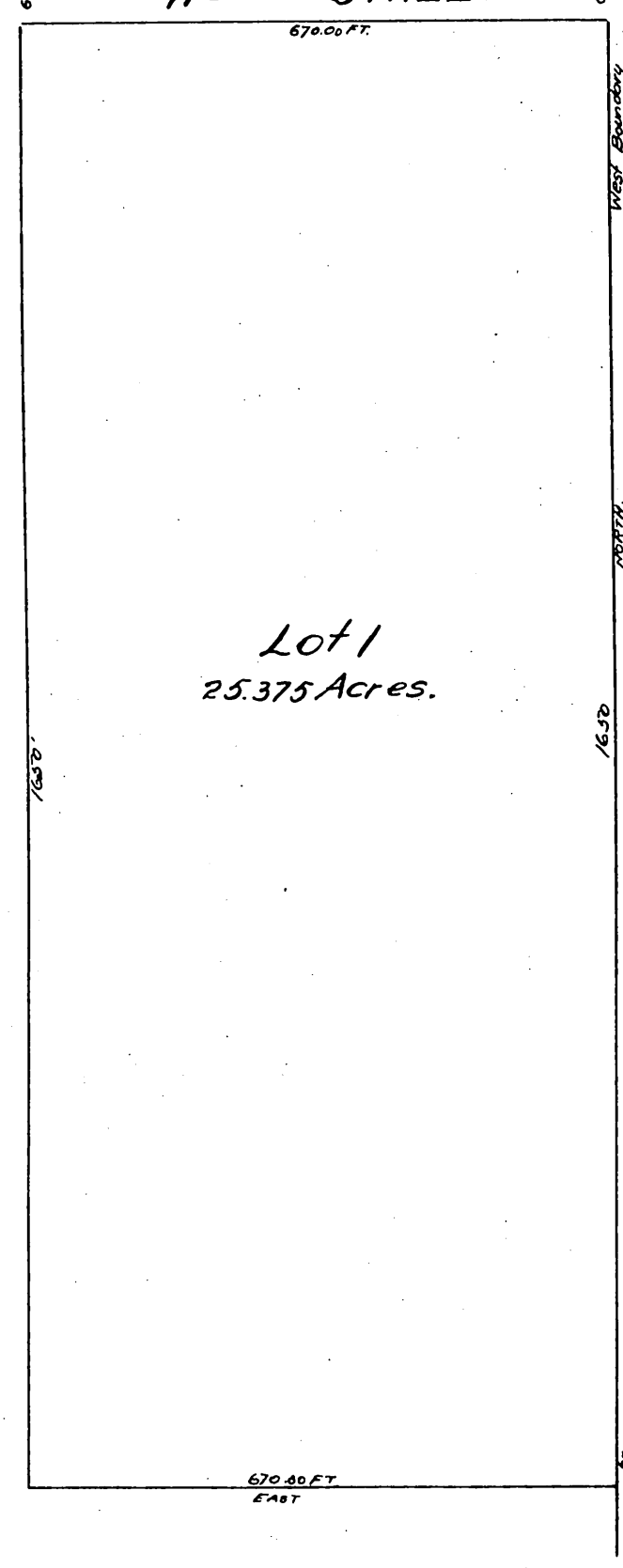
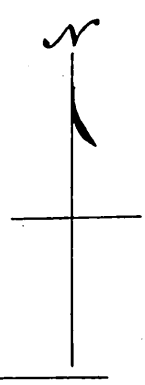
REPLAT  
of a portion of the  
*Florencia Heights*

(As per recorder's file map of April 25<sup>th</sup> 1899)  
After vacation of Streets and Alleys by  
order of the Hon. Board of Super\_visors.

San Pedro  
Los Angeles County, Cal.

J. A. Bernal  
Sur. & C.E.

Scale 100' to one inch.



I dedicate for public use the streets  
and alleys as shown on this map.

*Rudecinda F. de Dodson.*

