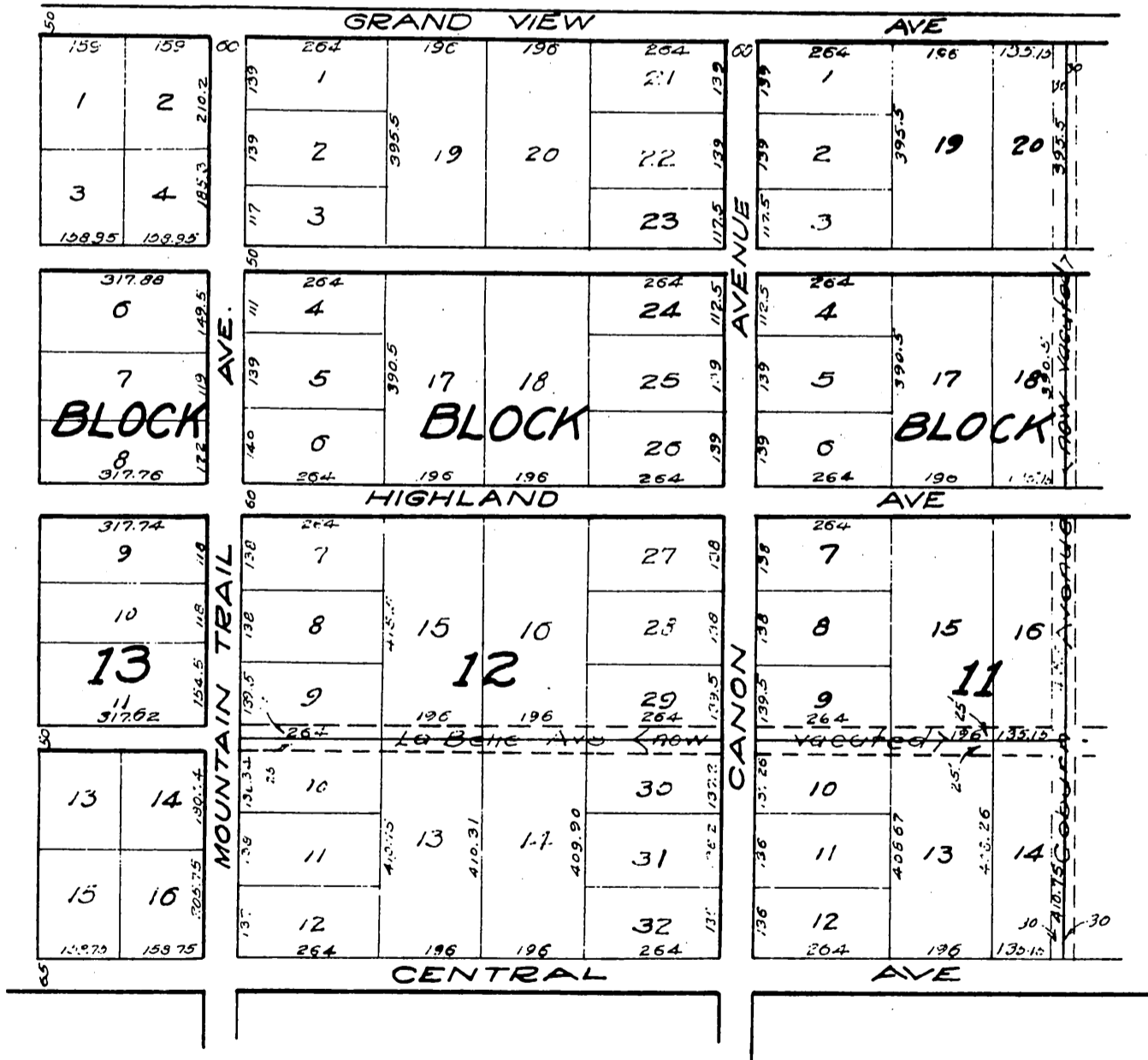




Map of  
**Carter's Vineyard Tract.**  
 (A map of said Tract being recorded in Book 36  
 page 19, Miscellaneous Rec.)  
 After vacation of certain streets by order of  
 the Board of Supervisors.



Recorded March 10, 1900.  
 Scale: 3/8" = 1 inch.  
 For street vacations see R. BK 3 pg 435