

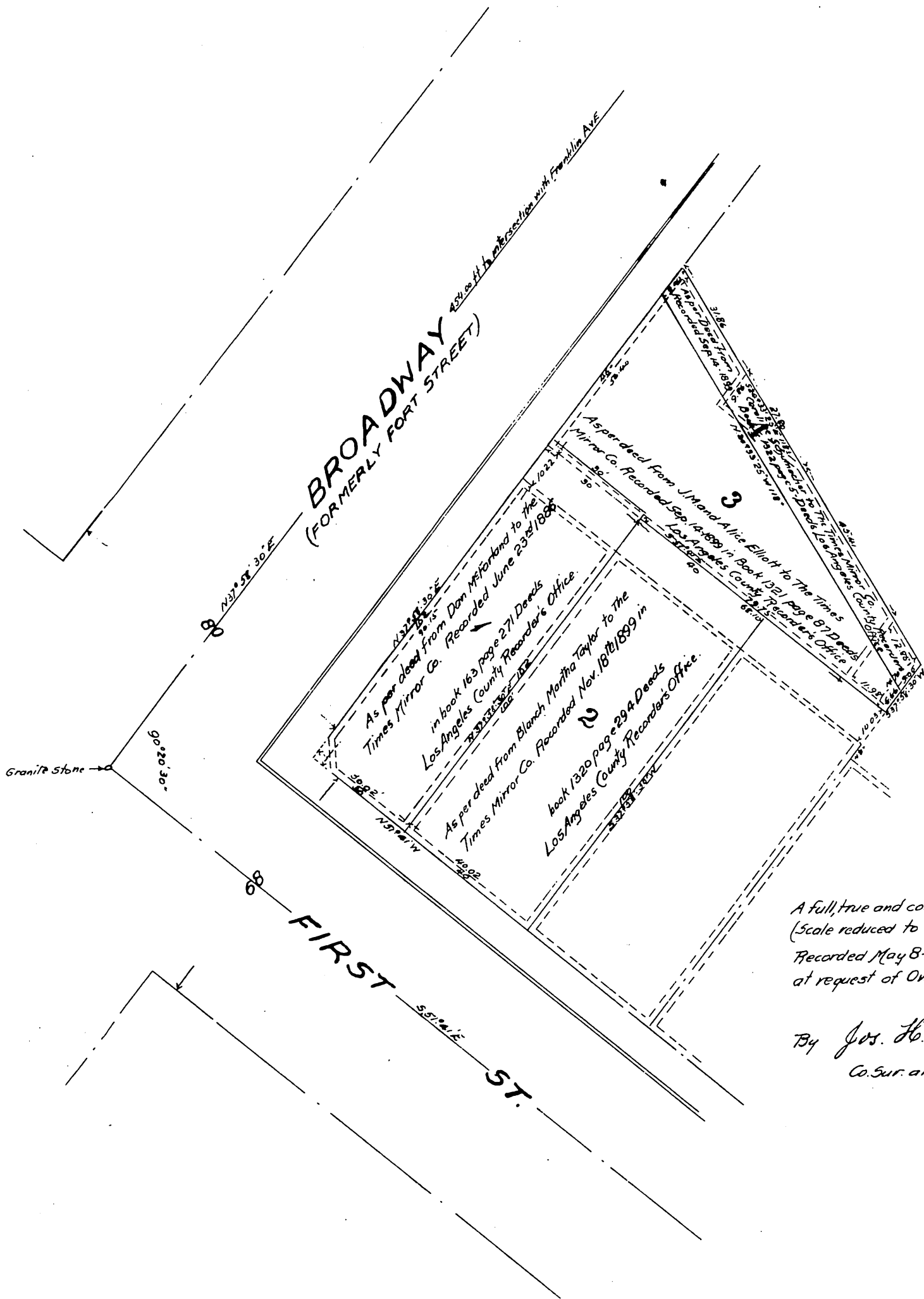
Map
of the

Times Mirror Co's Subdivision
Of their property Corner of First St. and Broadway
Los Angeles California.

SCALE 20 FEET = 1 INCH



NOTE. Black lines indicate Subdivision lines.
Black figures for distances are as given in the deeds
All courses are true courses calculated from the
true course of the center line of Broadway as
given by the City Engineer's Map showing the man-
-ument at intersection of First St. and Broadway.
Red lines indicate building lines. (-----)



A full, true and correct copy of the original
(Scale reduced to 30 feet to one inch)
Recorded May 8, 1900 at 52 Min. past 3 P.M.
at request of Owner.

R.D. Wade, Co. Recorder.

By Jos. H. Smith:

Co. Sur. and ex-officio Dep. Co. Rec.