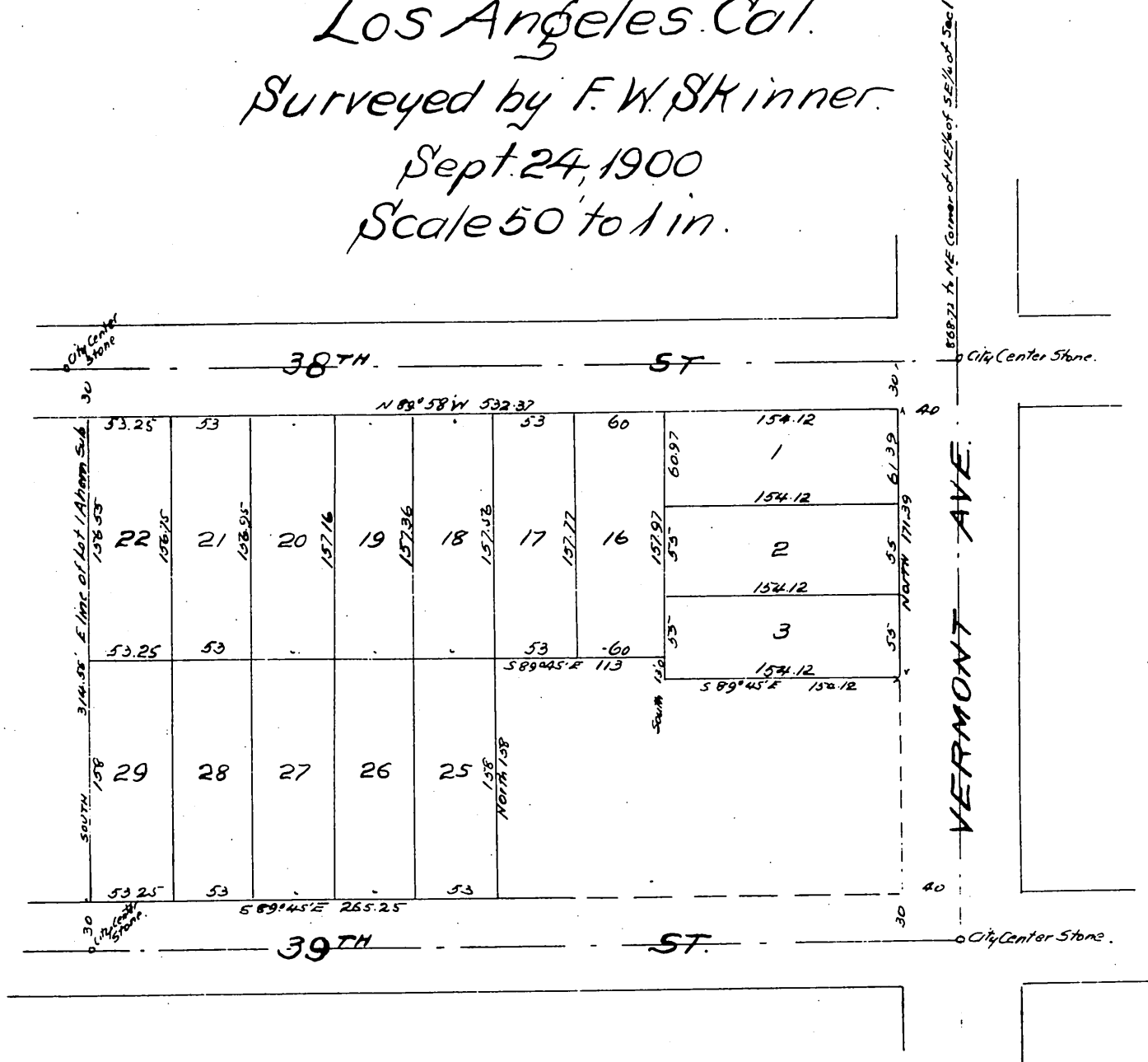


T. W. Tolchard's Subdivision  
of a portion of SE 1/4 of Sec. 1 T2S, R14W-S.B.M.

Los Angeles Cal.  
 Surveyed by F. W. Skinner.  
 Sept. 24, 1900  
 Scale 50 to 1 in.



Owners. - Theodore W. Tolchard.  
 Christina E. Tolchard.

A full, true and correct copy of the original  
 (Scale reduced to 100 feet to one inch)  
 Recorded Oct 4, 1900 at 4:48 Min past 1 P.M.  
 at request of T. W. Tolchard.

R.D. Wade - Co Recorder.

By Jos. A. Smith  
 C.O. Sur. and exp. officio Dep Co. Rec.