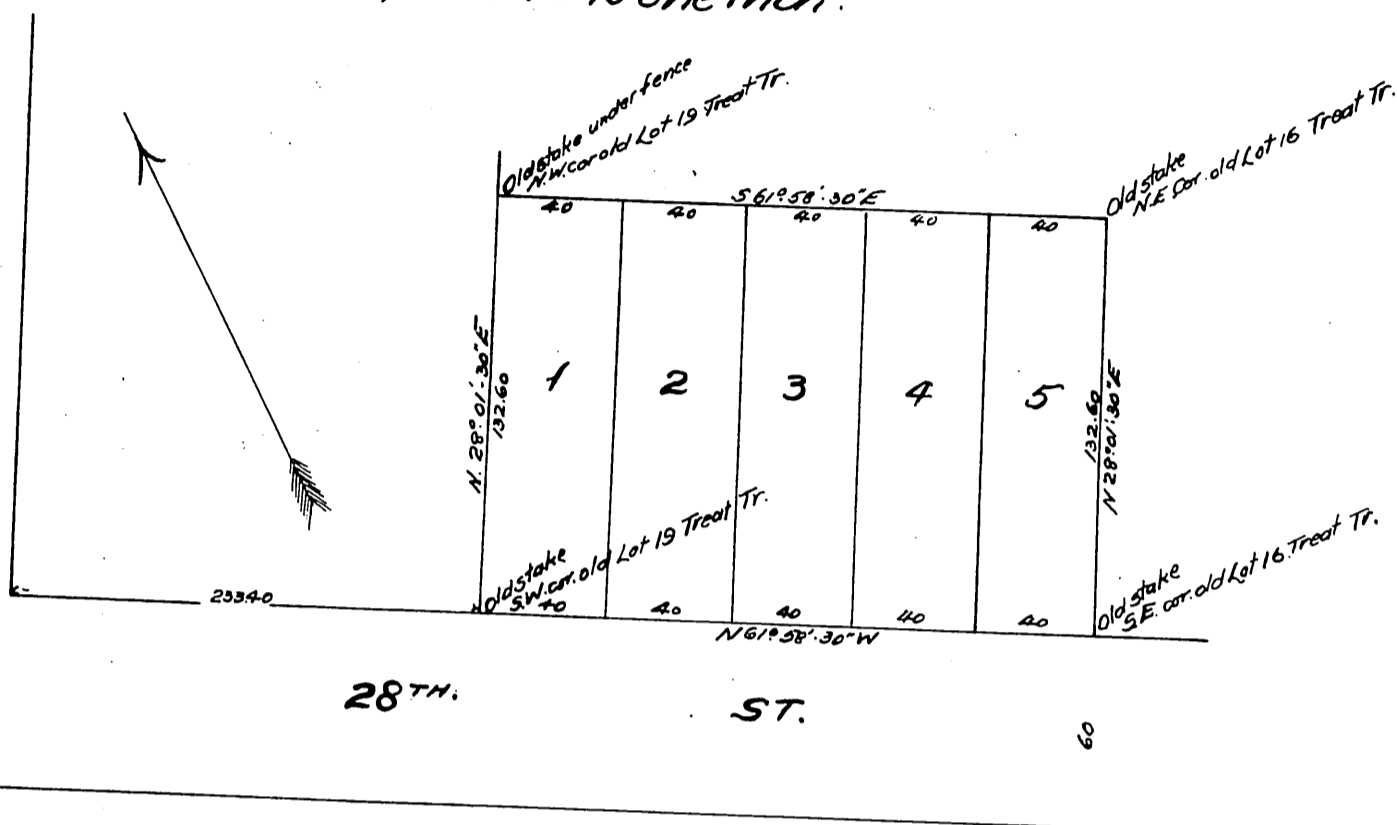


Vigus Re-subdivision
of Lots 16, 17, 18, 19 Block B
Treat Tract
City of Los Angeles, California
Surveyed in Nov. 1900
by E. T. Wright.
Scale 40' to one inch.

82

FIGUEROA STREET



I dedicate
for public use the streets and alleys as shown on this map.

J. W. Briggs.

A full, true and correct copy of the original
(Scale reduced to 60 feet to one inch)
Recorded Nov. 28th 1900 at 59 Min. past 9 A.M.
at request of Thos. Vigus.

R. D. Wade, Co. Recorder.

By Jos. H. Smith.

Co. Sur. and ex officio Dep. Co. Rec.

78