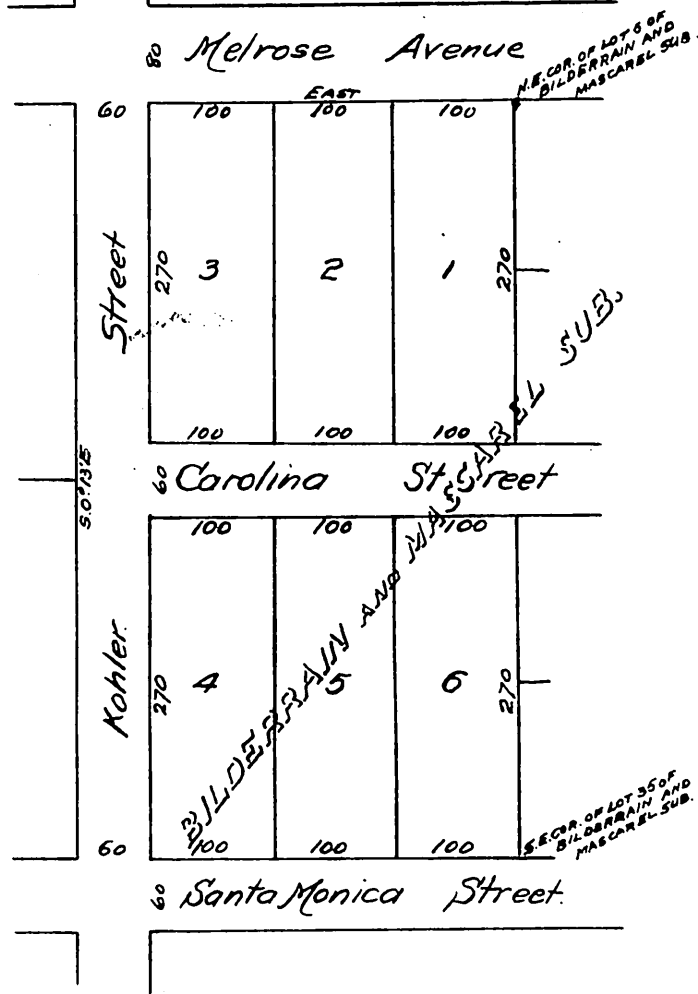


# MAP

Showing Lots 6, 7, 8, 9, 10, 11, 12, 13,  
14, 15, 26, 27, 28, 29, 30, 31, 32, 33, 34 and 35 of  
Bilderrain and Mascarel Subdivision  
reduced to six Lots; as per map  
recorded in Book 13 Page 75 of  
Miscellaneous Records of  
Los Angeles County, California.

90

J. A. Bernal Sur. & C.E.  
Scale 60 feet = 1"



Henry G. Weyse, Trustee.

A full, true and correct copy of the original  
(Scale reduced to 150 feet to one inch)  
Recorded Jan. 19, 1901, at 42 Min. past 9 A.M.  
at request of H.G. Weyse.

P.D. Wade, Co. Recorder.

By J. S. Smith.

Co. Sur. and ex-officio Dep. Co. Rec.

78