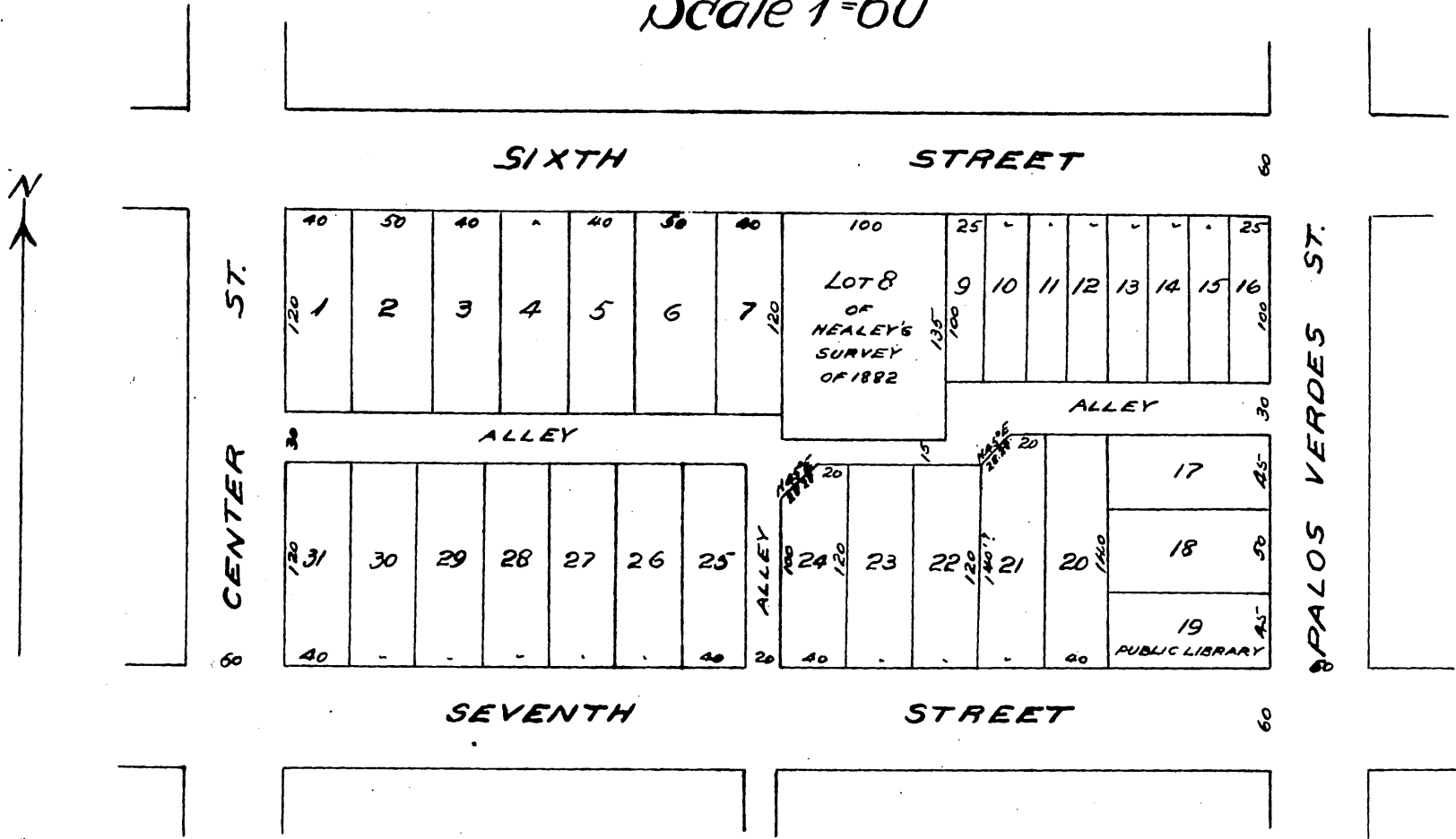




Peck Subdivision
of Block 53
City San Pedro, Cal.
Scale 1"=60'

92



I dedicate for
public use the streets and alleys as shown on this map.
Geo. H. Peck, Jr.

A full, true and correct copy of the original
(Scale reduced to 100 feet to one inch)
Recorded Feb 6-1901 at 47 Min. past 1 P.M.
at request of Geo. H. Peck, Jr.

R. D. Wade, Co. Recorder.

By J. L. Smith.

Co. Sur. and ex officio Dep. Co. Rec.

78