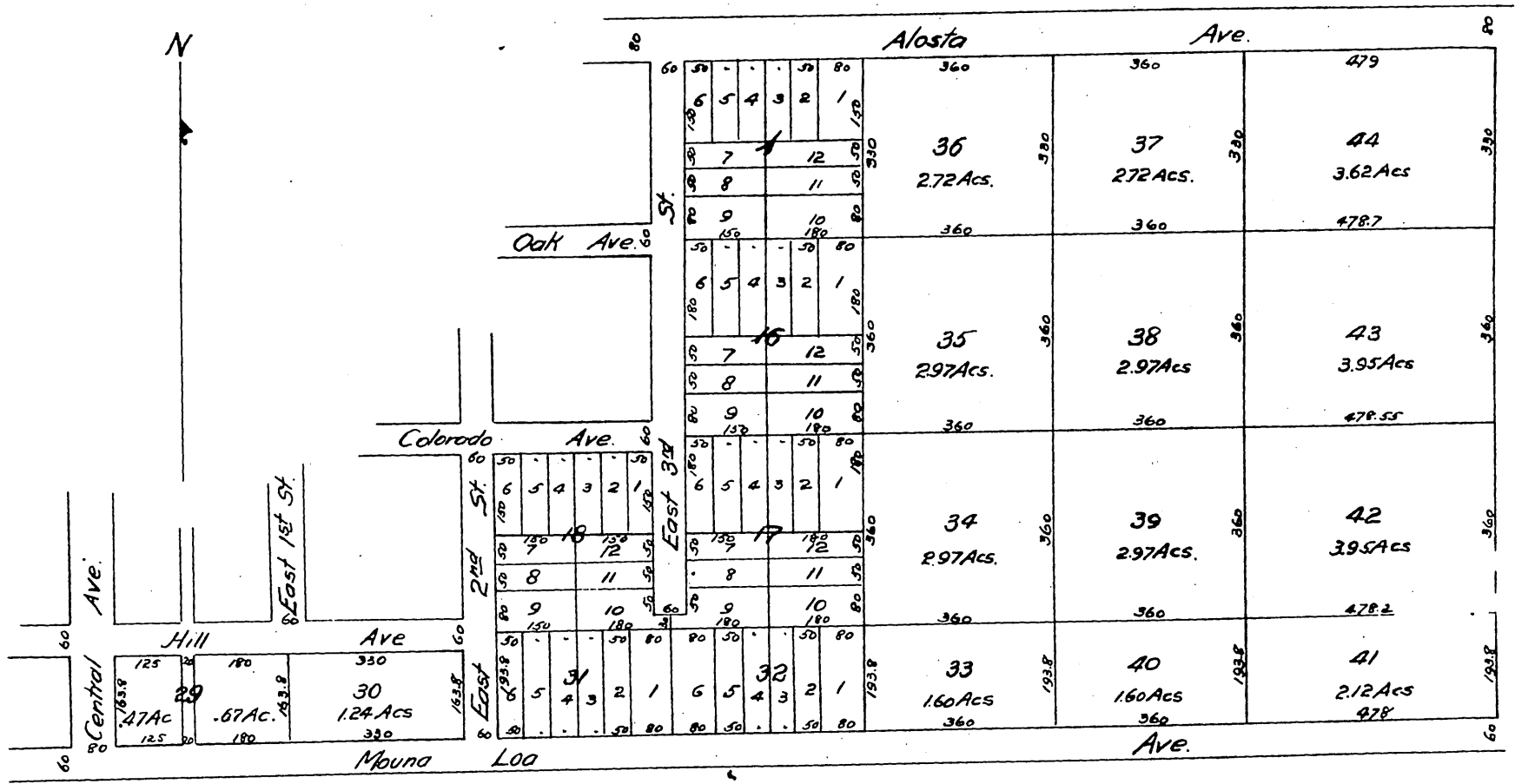




A portion of  
 Le Mars Addition  
 to the  
 Town of Alostia.  
 (Misc. Rec. 16-76)

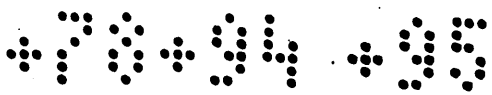
after vacation of Streets by Board of  
 Supervisors Road Book 4 Page 410 &  
 Minute Book 21 Page 90.  
 Scale 200' = 1"



Road Book 4, Page 410

April 4<sup>th</sup> 1894.

In re Vacation of certain Streets, and )  
 reversion to Acreage of same )  
 in Town of Alostia.



That Oak Avenue and Colorado Avenue, from the east line of East Third Street to the center line of East Fourth Street, shall revert to and become a part of in equal portions of Lots 1 and 16 respectively, as per map of said town tract.

That Colorado Avenue, from the east line of East Third Street to a center line of East Fourth Street, shall revert to and become a part of in equal portions of Lots 16 and 17 respectively of said town tract.

That Hill Avenue, from the east line of East Second Street to a center line on East Fourth Street, shall revert to and become a part of in equal portions of Lots 18, 17, 31 and 32 respectively of said town tract.

That East Third Street, from the north line of Manalua Avenue to the north line of Hill Avenue, shall revert to and become a part in equal portions of Lots 31, 18, 17 and 32 heretofore described.

That East Fourth Street, from the north line of Manalua Avenue to the south line of Alosta Avenue, shall revert to in equal thereof to Lots 1, 16, 17, 32, 36, 35, 34 and 33 and become a part of each respectively.

That East Fifth Street, from north line of Manalua Avenue to south line of Alosta Avenue, shall revert to in equal portions thereof to Lots 36, 35, 34, 33, 37, 38, 39 and 40 and become a part of each respectively.

That East Sixth Street, from the north line of Manalua Avenue to the south line of Alosta Avenue shall revert to lots 40, 39, 38, 37, 44, 43, 42 and 41 in equal portions, and become a part of each respectively.

That Oak Avenue from the center line of East Fourth Street to the east line of said town-site shall revert to and become a part of in equal portions thereof respectively Lots 1, 36, 37, 44, 16, 35, 38 and 43.

That Colorado Street, from the center line of East Fourth Street to the east line of said town-site shall revert to and become a part of, in equal portions thereof, Lots 16, 35, 38, 43, 17, 34, 39 and 42.

That Hill Avenue, from the center line of East Fourth Street to the east line of said town-site, shall revert to and become a part of in equal portions of Lots 17, 34, 39, 42, 32, 33, 40 and 41 respectively.

Conditioned upon the deciding to this County, free of expense, for road purposes if deemed necessary at any time by the Board of Supervisors, of a strip of land thirty feet in width off the east line of lands now owned by J.W. Boyd and G.S. Thomas, and a strip of land thirty feet in width off the south side of lands now owned by G.S. Thomas from East Third Street to east line of said lands of G.S. Thomas, as said lands of J.W. Boyd and G.S. Thomas are shown upon map of Lamar's Addition to Alosta and Glendera.

Minute Book 21, page 90

October 10<sup>th</sup> 1895

In re Vacation of East First Street  
in Town of Alosta

It is ordered that that portion of East First Street, lying between Blocks 29 and 30 in the Town of Alosta, Los Angeles County, California, be and the same is hereby vacated and abandoned and the land therein contained restored to acreage, to revert to the owners of land immediately adjacent thereto.

A full, true and correct copy of the original  
(Scale reduced to 300 feet to one inch)  
Recorded Feb. 15, 1901 at 2 Min. past 11 A.M.  
at request of G.S. Thomas.

R.D. Wade Co Recorder.

By Jos. H. Smith.

Co. Sur. and ex-officio Dep. Co. Rec.