



Pasadena Land and Water Company's Re-Subdivision

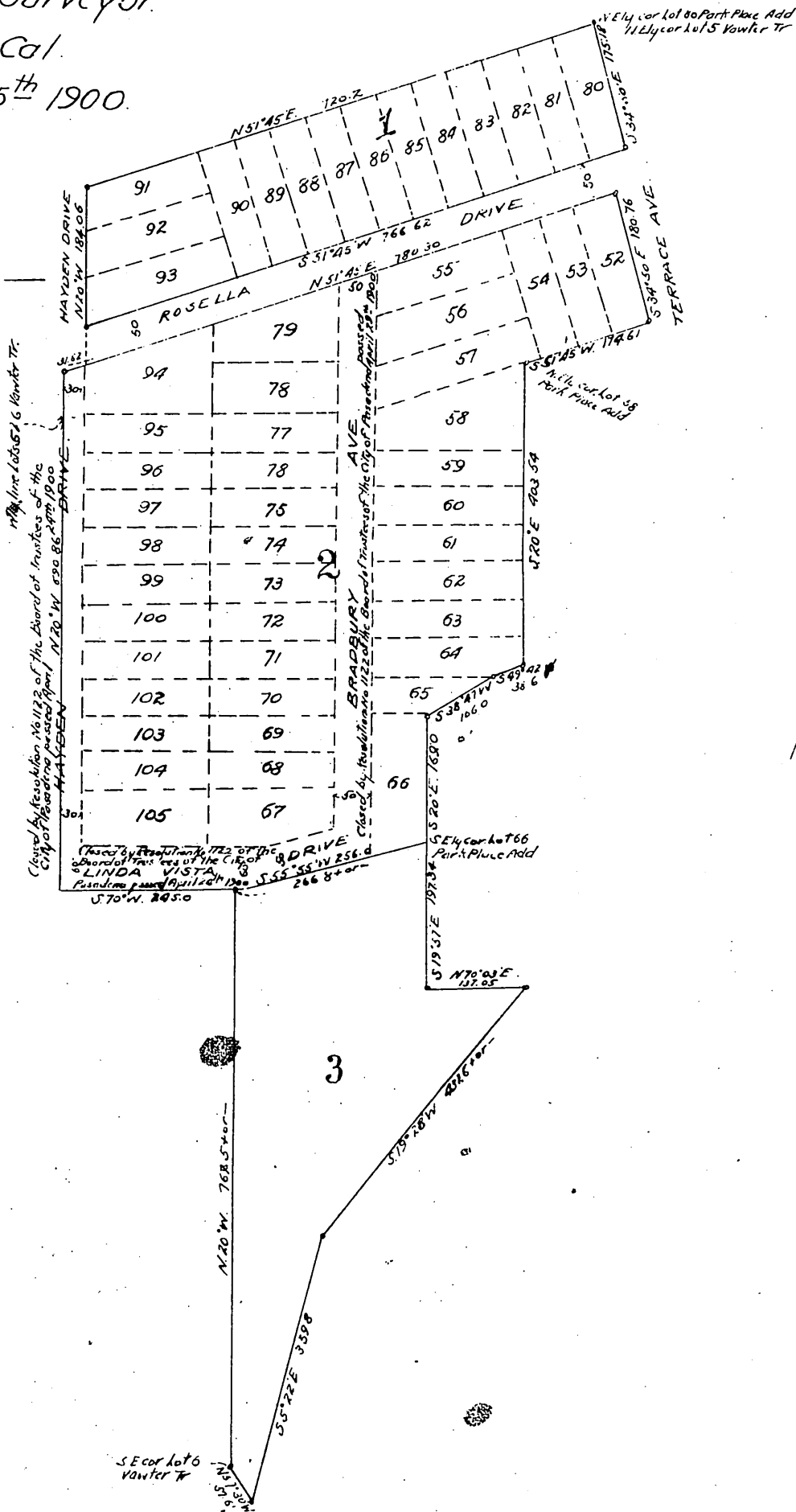
Of Lots No. 52 to 105 inclusive of Park Place Addition, Bradbury Avenue, Linda Vista Drive and a portion of Hayden Drive as recorded in Book 25 Page 1 Miscellaneous Records; also a re-sub of a portion of Lots No. 1 and 3 Vawter Tract as recorded in Book 3 Page 410 Miscellaneous Records. Broken black lines show original boundary lines of Lots in Park Place Addition. Red lines show boundary lines of lots in said re-sub. Red figures show courses of said boundary lines and the numbers of the lots of said re-sub. Scale 1 inch = 100 feet

W.B. Clapp, Surveyor

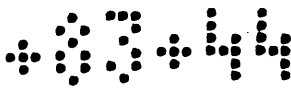
Pasadena, Cal.

February 15th 1900.

Note: Red lines shown thus -



City of Pasadena, Resolution No. 113, of the Board of Trustees of the City of Pasadena, passed April 11, 1900, and April 19, 1900, and April 24, 1900, and April 25, 1900, and April 26, 1900, and April 27, 1900, and April 28, 1900, and April 29, 1900, and April 30, 1900, and May 1, 1900, and May 2, 1900, and May 3, 1900, and May 4, 1900, and May 5, 1900, and May 6, 1900, and May 7, 1900, and May 8, 1900, and May 9, 1900, and May 10, 1900, and May 11, 1900, and May 12, 1900, and May 13, 1900, and May 14, 1900, and May 15, 1900, and May 16, 1900, and May 17, 1900, and May 18, 1900, and May 19, 1900, and May 20, 1900, and May 21, 1900, and May 22, 1900, and May 23, 1900, and May 24, 1900, and May 25, 1900, and May 26, 1900, and May 27, 1900, and May 28, 1900, and May 29, 1900, and May 30, 1900, and May 31, 1900, and June 1, 1900, and June 2, 1900, and June 3, 1900, and June 4, 1900, and June 5, 1900, and June 6, 1900, and June 7, 1900, and June 8, 1900, and June 9, 1900, and June 10, 1900, and June 11, 1900, and June 12, 1900, and June 13, 1900, and June 14, 1900, and June 15, 1900, and June 16, 1900, and June 17, 1900, and June 18, 1900, and June 19, 1900, and June 20, 1900, and June 21, 1900, and June 22, 1900, and June 23, 1900, and June 24, 1900, and June 25, 1900, and June 26, 1900, and June 27, 1900, and June 28, 1900, and June 29, 1900, and June 30, 1900, and July 1, 1900, and July 2, 1900, and July 3, 1900, and July 4, 1900, and July 5, 1900, and July 6, 1900, and July 7, 1900, and July 8, 1900, and July 9, 1900, and July 10, 1900, and July 11, 1900, and July 12, 1900, and July 13, 1900, and July 14, 1900, and July 15, 1900, and July 16, 1900, and July 17, 1900, and July 18, 1900, and July 19, 1900, and July 20, 1900, and July 21, 1900, and July 22, 1900, and July 23, 1900, and July 24, 1900, and July 25, 1900, and July 26, 1900, and July 27, 1900, and July 28, 1900, and July 29, 1900, and July 30, 1900, and July 31, 1900, and August 1, 1900, and August 2, 1900, and August 3, 1900, and August 4, 1900, and August 5, 1900, and August 6, 1900, and August 7, 1900, and August 8, 1900, and August 9, 1900, and August 10, 1900, and August 11, 1900, and August 12, 1900, and August 13, 1900, and August 14, 1900, and August 15, 1900, and August 16, 1900, and August 17, 1900, and August 18, 1900, and August 19, 1900, and August 20, 1900, and August 21, 1900, and August 22, 1900, and August 23, 1900, and August 24, 1900, and August 25, 1900, and August 26, 1900, and August 27, 1900, and August 28, 1900, and August 29, 1900, and August 30, 1900, and August 31, 1900, and September 1, 1900, and September 2, 1900, and September 3, 1900, and September 4, 1900, and September 5, 1900, and September 6, 1900, and September 7, 1900, and September 8, 1900, and September 9, 1900, and September 10, 1900, and September 11, 1900, and September 12, 1900, and September 13, 1900, and September 14, 1900, and September 15, 1900, and September 16, 1900, and September 17, 1900, and September 18, 1900, and September 19, 1900, and September 20, 1900, and September 21, 1900, and September 22, 1900, and September 23, 1900, and September 24, 1900, and September 25, 1900, and September 26, 1900, and September 27, 1900, and September 28, 1900, and September 29, 1900, and September 30, 1900, and October 1, 1900, and October 2, 1900, and October 3, 1900, and October 4, 1900, and October 5, 1900, and October 6, 1900, and October 7, 1900, and October 8, 1900, and October 9, 1900, and October 10, 1900, and October 11, 1900, and October 12, 1900, and October 13, 1900, and October 14, 1900, and October 15, 1900, and October 16, 1900, and October 17, 1900, and October 18, 1900, and October 19, 1900, and October 20, 1900, and October 21, 1900, and October 22, 1900, and October 23, 1900, and October 24, 1900, and October 25, 1900, and October 26, 1900, and October 27, 1900, and October 28, 1900, and October 29, 1900, and October 30, 1900, and October 31, 1900, and November 1, 1900, and November 2, 1900, and November 3, 1900, and November 4, 1900, and November 5, 1900, and November 6, 1900, and November 7, 1900, and November 8, 1900, and November 9, 1900, and November 10, 1900, and November 11, 1900, and November 12, 1900, and November 13, 1900, and November 14, 1900, and November 15, 1900, and November 16, 1900, and November 17, 1900, and November 18, 1900, and November 19, 1900, and November 20, 1900, and November 21, 1900, and November 22, 1900, and November 23, 1900, and November 24, 1900, and November 25, 1900, and November 26, 1900, and November 27, 1900, and November 28, 1900, and November 29, 1900, and November 30, 1900, and December 1, 1900, and December 2, 1900, and December 3, 1900, and December 4, 1900, and December 5, 1900, and December 6, 1900, and December 7, 1900, and December 8, 1900, and December 9, 1900, and December 10, 1900, and December 11, 1900, and December 12, 1900, and December 13, 1900, and December 14, 1900, and December 15, 1900, and December 16, 1900, and December 17, 1900, and December 18, 1900, and December 19, 1900, and December 20, 1900, and December 21, 1900, and December 22, 1900, and December 23, 1900, and December 24, 1900, and December 25, 1900, and December 26, 1900, and December 27, 1900, and December 28, 1900, and December 29, 1900, and December 30, 1900, and December 31, 1900.



The Pasadena Land and Water Company, a corporation organized under the laws of the State of California and having its principal place of business in the City of Pasadena Los Angeles County California hereby certifies that it is the owner of all the lands shown on this map and that it has caused said lands to be re-subdivided and to be designated in the manner shown hereon

In Witness Whereof the said Pasadena Land and Water Company has caused its name and seal to be hereunto affixed by its President and Secretary this 25th day of February 1901



Pasadena Land and Water Company
By H. K. McQuilling President
Attest J. G. Bennett Secretary

State of California }
County of Los Angeles } ss.

On this 25th day of February in the year one thousand nine hundred and one, before me Walter L. Watkins a Notary Public in and for said County of Los Angeles personally appeared A. K. McQuilling personally known to me to be the President of the Pasadena Land and Water Company, the Corporation that executed the foregoing statement and the map upon which the said statement is indorsed, and acknowledged to me that such Corporation executed the said statement and the said map.

In Witness Whereof, I have hereunto set my hand and affixed my official seal the day and year in this certificate first above written.



Walter L. Watkins
Notary Public in and For
Los Angeles County, California

A full, true and correct copy of the original
(Scale reduced to 200 feet to one inch)
Recorded Feb 26 1901 at 4:19 P.M. at request of Owner.

R. D. Wade County Recorder

By J. H. Smith
County Surveyor and ex officio Deputy County Recorder.