

MAP

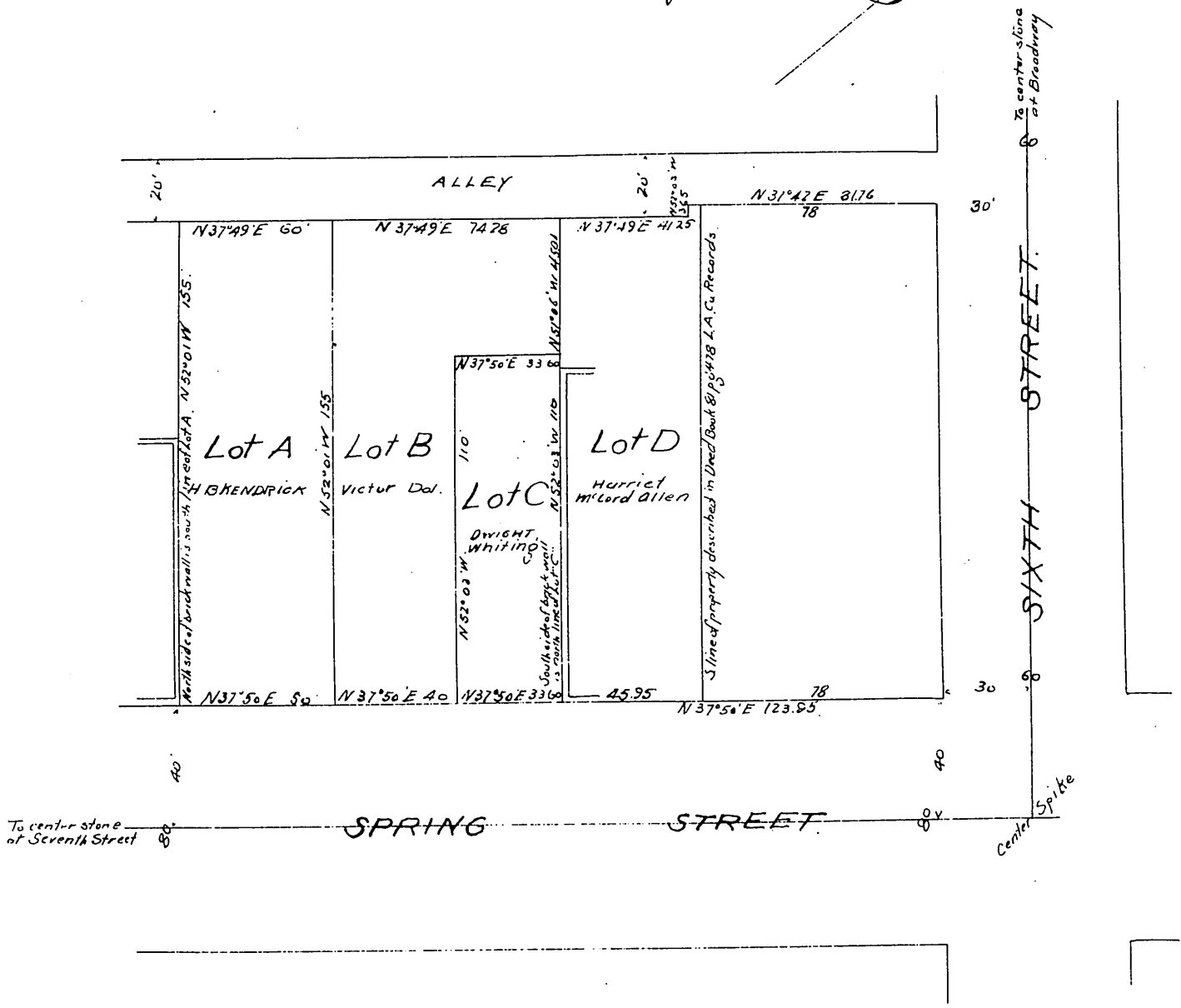
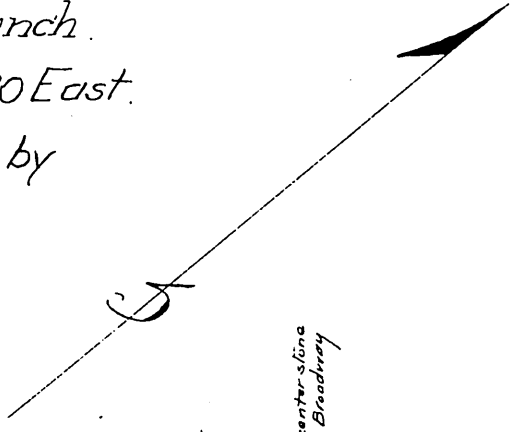
of a resubdivision of a portion of
Block 17 Ords Survey
in the City of Los Angeles.
County of Los Angeles, State of California

Scale 20 feet to one inch.

True Courses Var. 14°30' East.

Surveyed May 1900 by

V. J. Rowan
Surveyor.



We the undersigned hereby declare that we are the owners of that portion of Block Seventeen (17) Ords Survey in the City and County of Los Angeles, State of California shown as lots "D", "A", "B" and "C" upon the foregoing map; that said map is a correct delineation of our respective holdings and property in said Block, that said lots "A", "D", "B" and "C" as shown thereon correctly represent and delineate our respective property and possessions therein; that said map correctly shows the dividing lines between our respective properties and we hereby approve and adopt the same as a correct and accurate map of our said property.

Harriet Mc Cord Allen
Humphrey B. Hendrick
Dwight Whiting
Victor Dol.