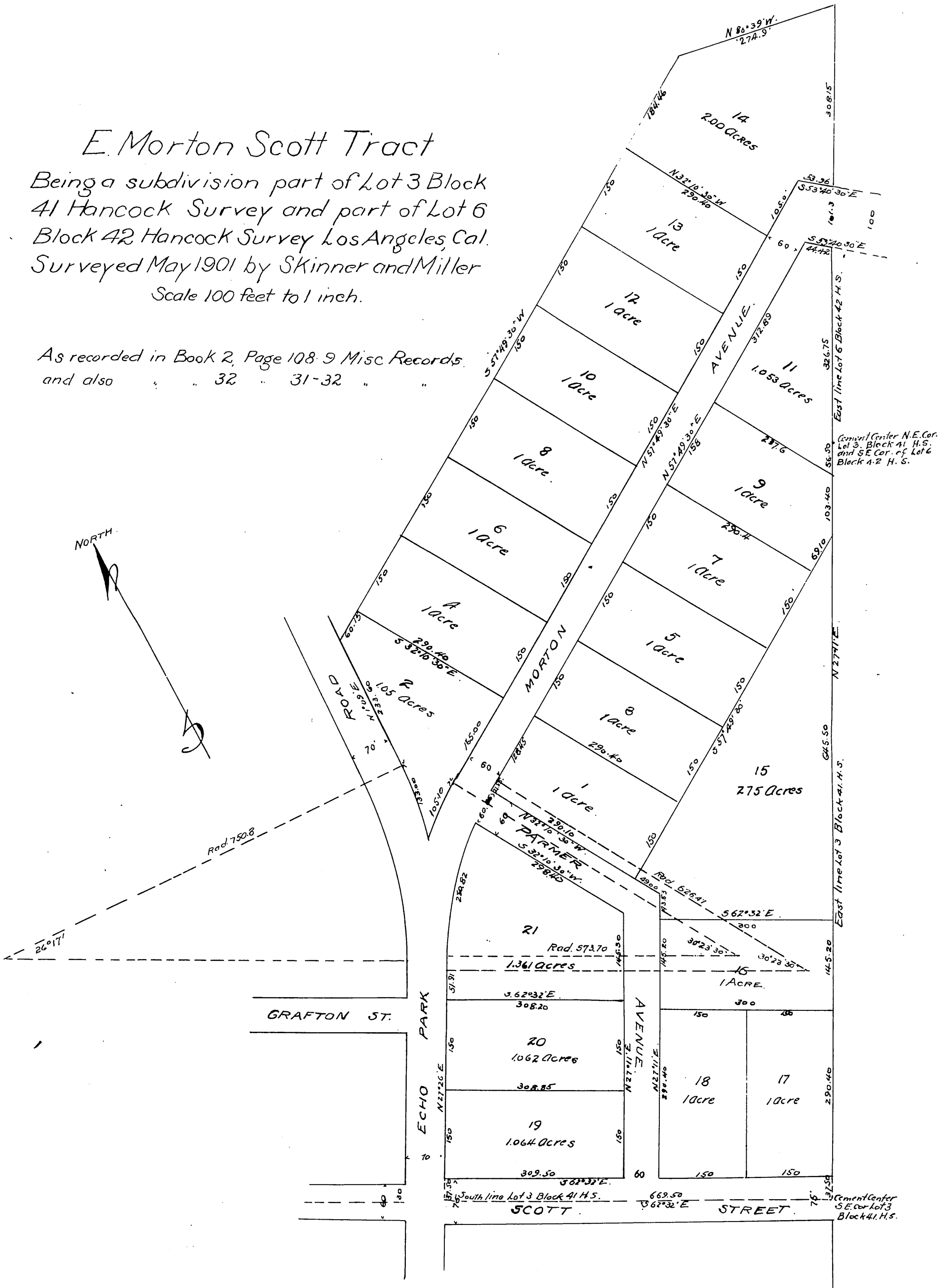


# E. Morton Scott Tract

Being a subdivision part of Lot 3 Block 41 Hancock Survey and part of Lot 6 Block 42 Hancock Survey Los Angeles, Cal.  
Surveyed May 1901 by Skinner and Miller  
Scale 100 feet to 1 inch.

As recorded in Book 2, Page 108-9 Misc Records  
and also " 32 " 31-32 " "



Cement Center N.E. Cor. Lot 3, Block 41, H.S. and S.E. Cor. of Lot 6 Block 42 H.S.

Cement Center S.E. Cor. Lot 3 Block 41, H.S.