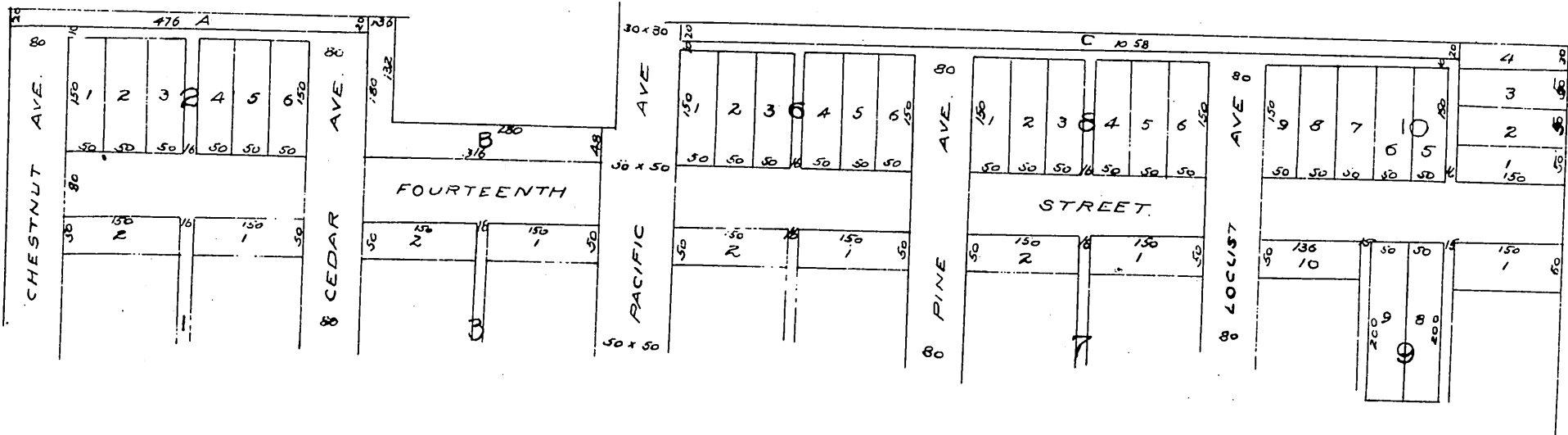


PLAT

showing property affected
by the vacation of a portion of Fourteenth Street
in the

TOWNSEND & ROBINSON TRACT
(Map Book 2 pages 3 and 4)

by order of the Board of Supervisors as
shown by attached copy of said order
Portion colored yellow shows the location of that part of Four-
teenth Street vacated by order of the Board of Supervisors of
Los Angeles County.



Road Book 6 page 581.

Office of the Board of Supervisors of Los Angeles County, California.
September 22nd 1902.

The Board met in regular session pursuant to adjournment Present Super-
visors E. S. Field Chairman presiding, Geo Alexander, O. W. Longden, C. E. Patten-
son and P. J. Wilson, and C. W. Bell, Clerk, by R. Williams, deputy

In re Vacation of Portion of 14th St. }
in Long Beach Road Dist. } This being the time regularly set by
order of this Board, and publication of
notice thereof, for hearing the petition herein, the matter is called up, and no
protests having been filed;

Upon motion of Supervisor Wilson duly seconded and carried, it is or-
dered that Fourteenth Street, in Long Beach Road District, from the west
line of American Avenue to the east line of Chestnut Street, be and the
same is hereby vacated and abandoned, and the land therein contained re-
stored to acreage

This order is conditioned upon the petitioners filing for record in the
office of the Recorder of Los Angeles County a certified copy hereof to-
gether with a map showing all property as affected thereby

State of California }
County of Los Angeles } S.S. No. ...

I, C. W. Bell, County Clerk, and ex-officio Clerk of
the Board of Supervisors of said County, do hereby certify the foregoing
to be a full, true and correct copy of the original Minutes of the Board of
Supervisors as appears in Road Book No 6 Page 581. In re Vacation of por-
tion of 14th St in Long Beach Road Dist. on file in my office, and that I
have carefully compared the same with the original.

In Witness Whereof, I have hereunto set my hand and
affixed the seal of the Board of Supervisors this 12th
day of November, 1902.

C. W. Bell, County Clerk.
By R. Williams Deputy.



A full, true and correct copy of the original.
(Scale reduced to 200 feet to one inch)
Recorded Nov. 13, 1902 at 48 Min past 9 A.M.
at request of Townsend, Robinson & Co.

R. D. Wade, County Recorder
By J. H. Smith
County Surveyor and ex-officio Deputy County Recorder.