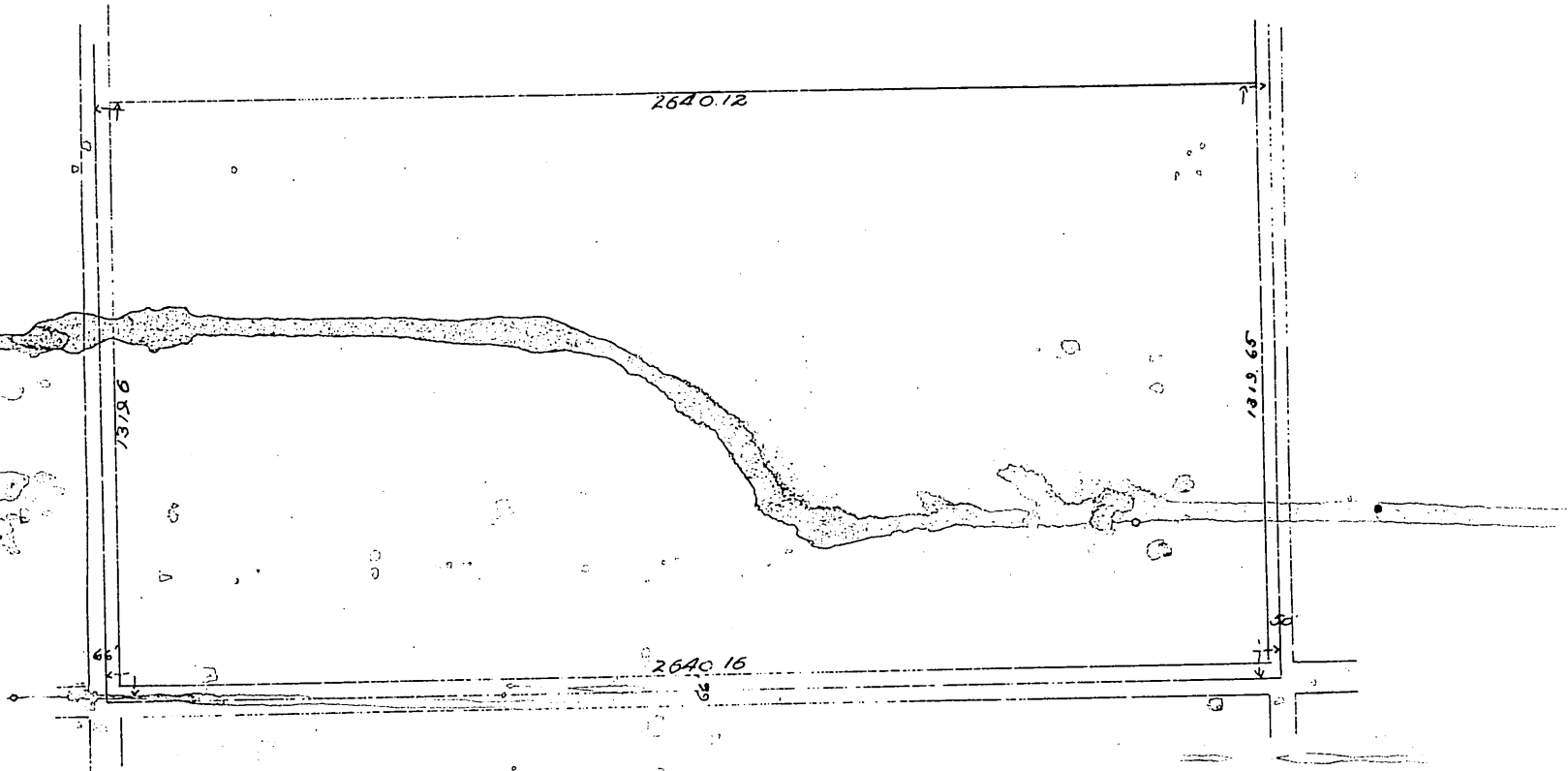




NEFF TRACT
 Replat
 of a portion of
 Sec 4 Tp 3 S R 14 W S B M.
 (S 1/2 or S W 1/4)
 as per map
 in Misc Records Bk 34 P. 17



Office of the Board of Supervisors of Los Angeles County, California.
 December 22nd 1902

The Board met in regular session Present, Supervisors E. S. Field
 Chairman presiding Geo. Alexander O W Longdon, C E. Patterson, and I. P.
 J. Wilson, and C. W. Bell, Clerk by R. Williams deputy.

In re Vacation of Road in }
 S 1/2 of S. W 1/4 of Sec. 4 }
 T. 3. S. R. 14 W. Centinella }
 Road District.

This being the time regularly set by order of continuance of this Board, and publication of notice thereof, for hearing the petition in the matter of the vacation and abandonment of a street or road located in Sec. 4, T. 3, S, R. 14 W., and extending north 1319.6 feet from the south boundary line of said section, the matter is called up E. D. Neff, the petitioner is sworn and examined, and no protests having been filed, Upon motion of Supervisor Wilson, duly seconded and carried, it is ordered that the street located 1320.8 feet east of the western boundary line of Sec. 4, T. 3, S, R. 14 W., and extending north 1319.6 feet from the south boundary line of said section be and the same is hereby vacated and abandoned, and the land therein contained restored to acreage.

This order is conditioned upon the petitioners filing for record in the office of the Recorder of Los Angeles County a certified copy here of, together with a map showing all property as affected thereby.

State of California } ss No....
 County of Los Angeles }

I. C. W. Bell, County Clerk, and ex-officio Clerk of the Board of Supervisors of said County, do hereby certify the foregoing to be a full, true and correct copy of the original Minutes of the Board of Supervisors, as appears in Road Book No. 7, Page ... In re Vacation of Road in S 1/2 of S. W. 1/4 of Sec. 4 T. 3. S. R. 14 W. Centinella Road District on file in my office, and that I have carefully compared the same with the original.



In Witness Whereof, I have hereunto set my hand and affixed the seal of the Board of Supervisors, this 27th day of December

C. W. Bell, County Clerk.
 By R. Williams, Deputy.

A full true and correct copy of the original
 (Scale reduced to 400' = 1 inch)

Recorded Dec 31-1902 at 41 min. past 4 P.M.

at request of E. D. Neff

By J. H. Smith,

R. D. Wade Co. Recorder.

County Surveyor and ex-officio Deputy County Recorder.