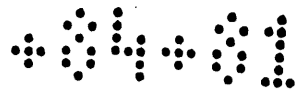


Map of  
The Town of  
**SAN PEDRO**



To accompany Report of Partition  
of Rancho Los Palos Verdes.

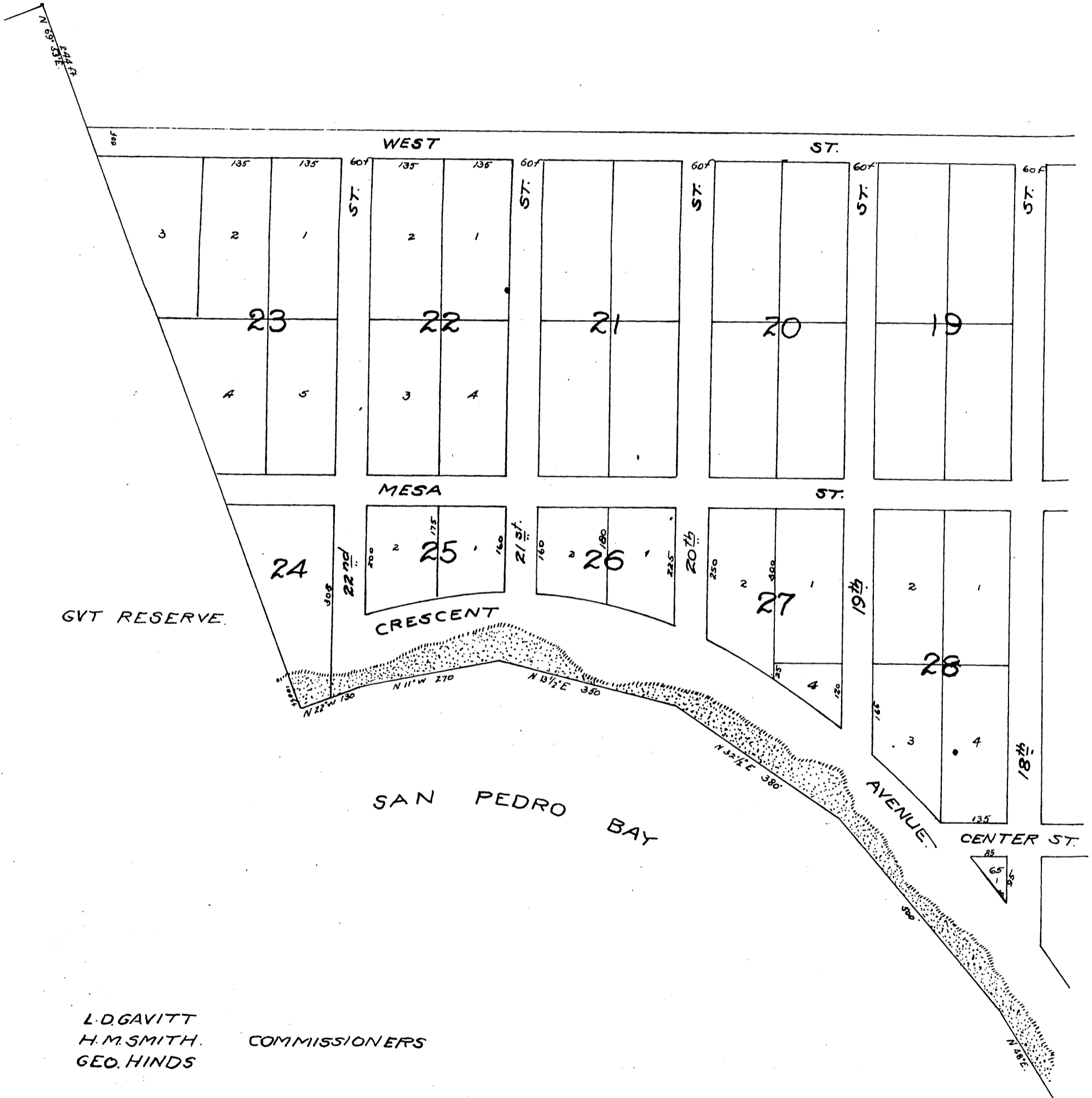
By order of the Superior Court

of Los Angeles County

Hon. J. D. Hines Presiding

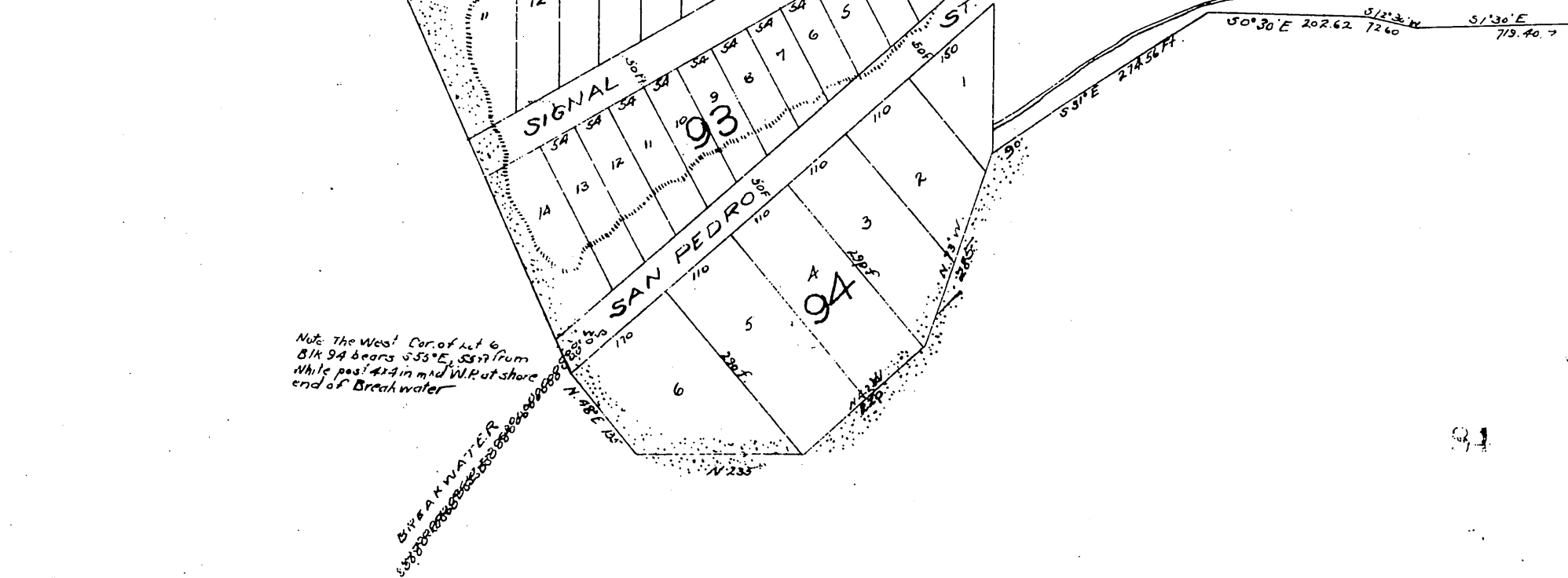
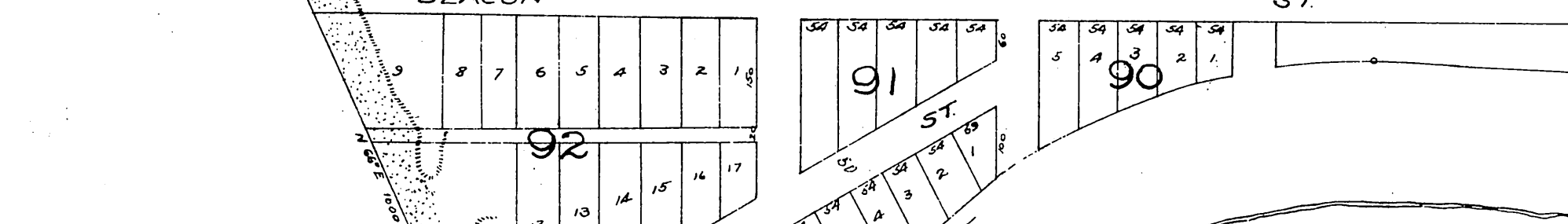
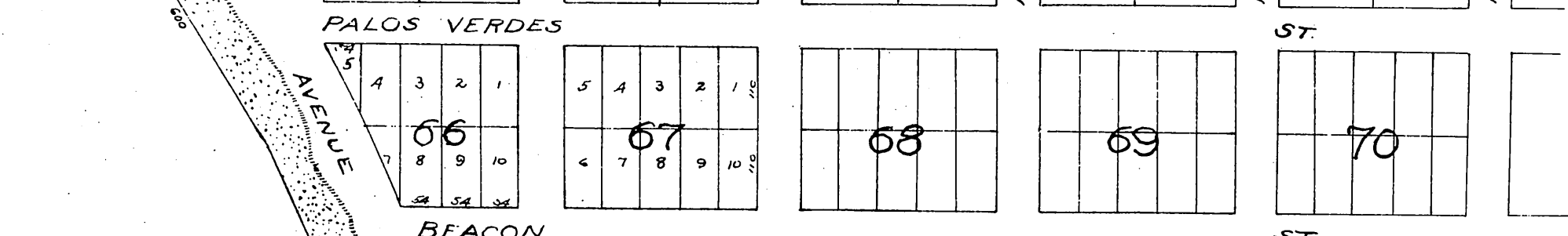
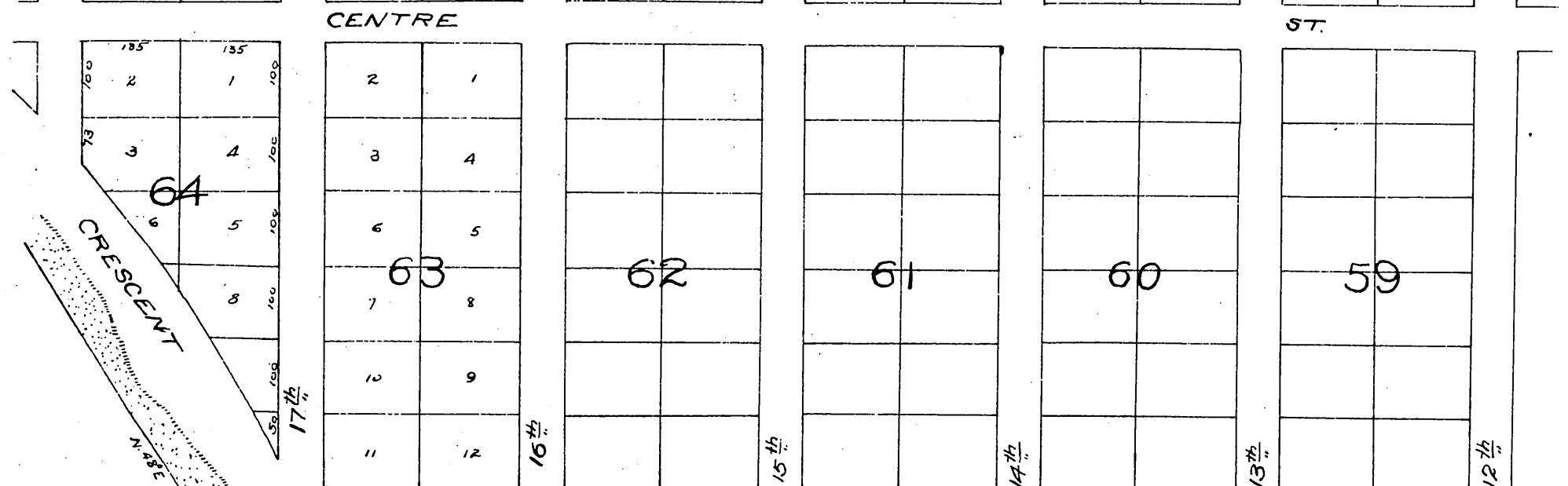
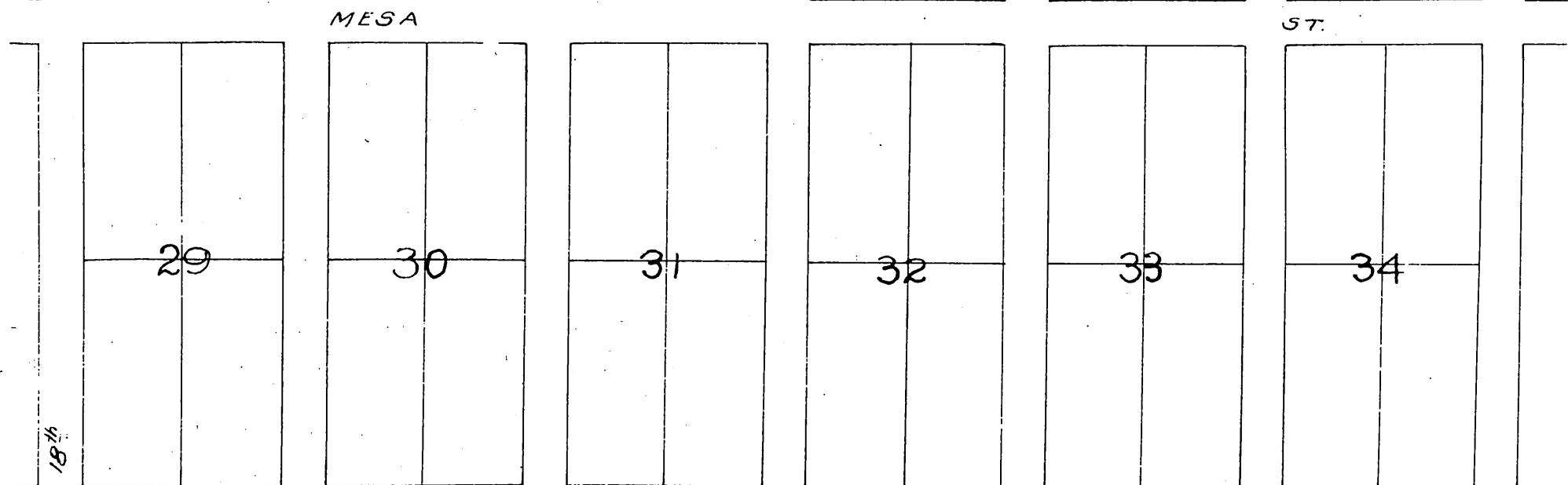
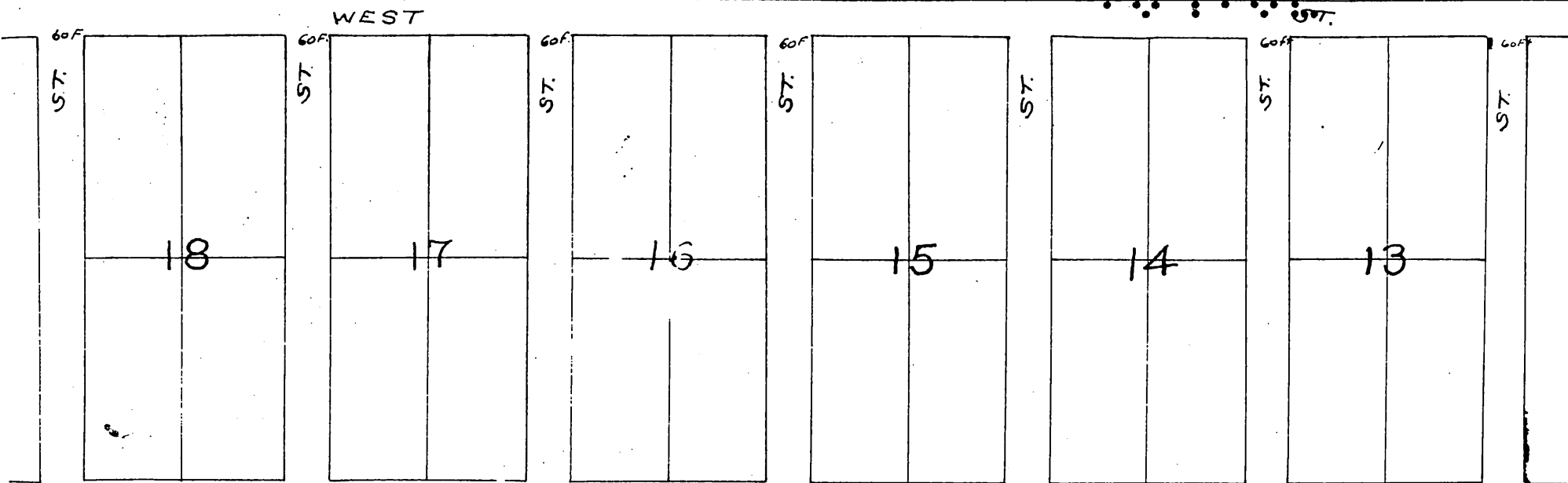
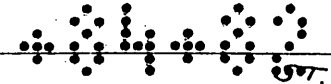
Scale 200 feet to inch

Charles T. Healey Surveyor



L. D. GAVITT  
H. M. SMITH  
GEO. HINDS

COMMISSIONERS



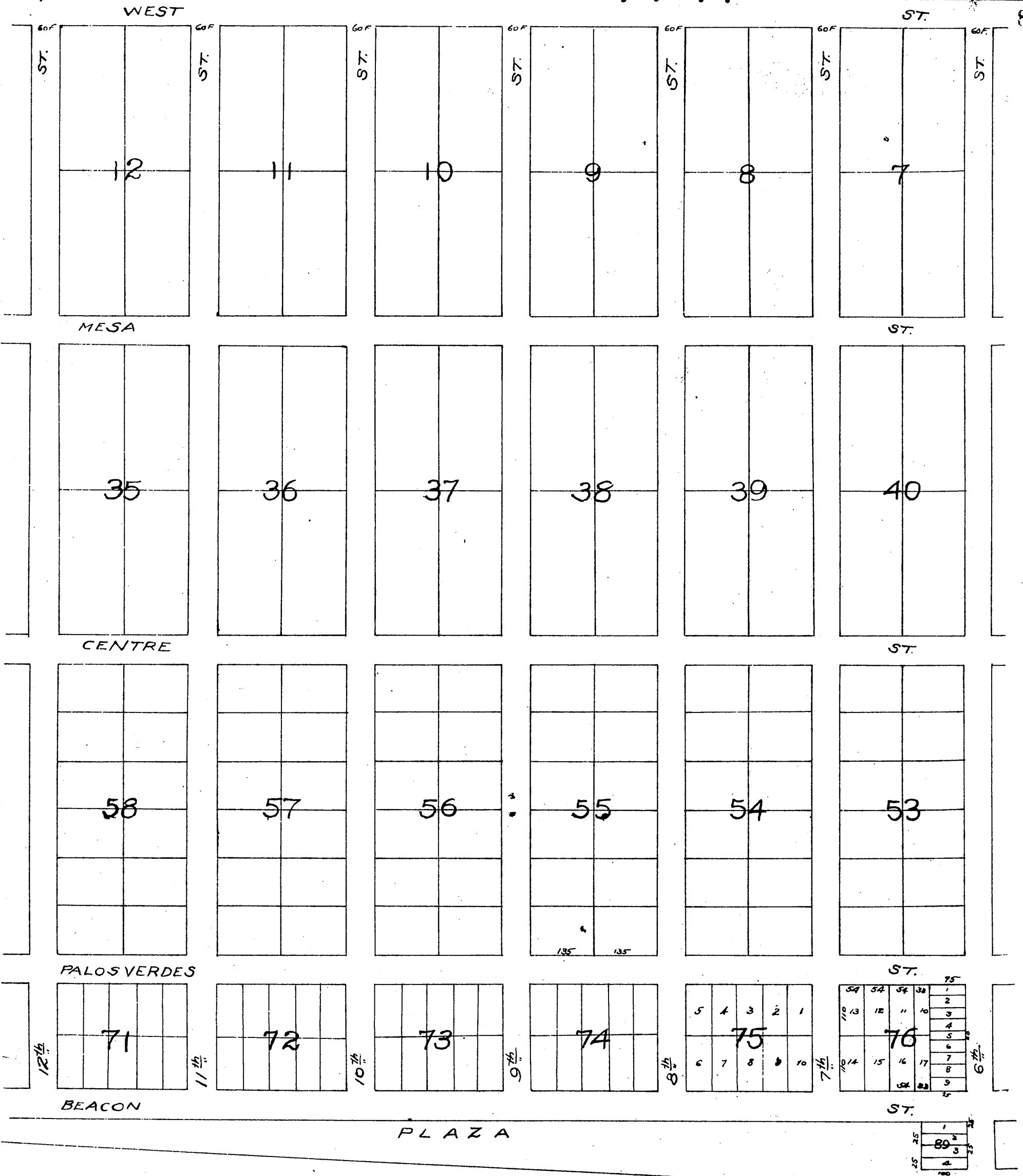
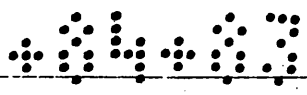
Note: The West Cor. of Lot 6 Blk 94 bears S 35° E, 337.17m White post 4.24 in mid W.P. at shore end of Break water

BAY BREAK WATER

SIGNAL

SAN PEDRO

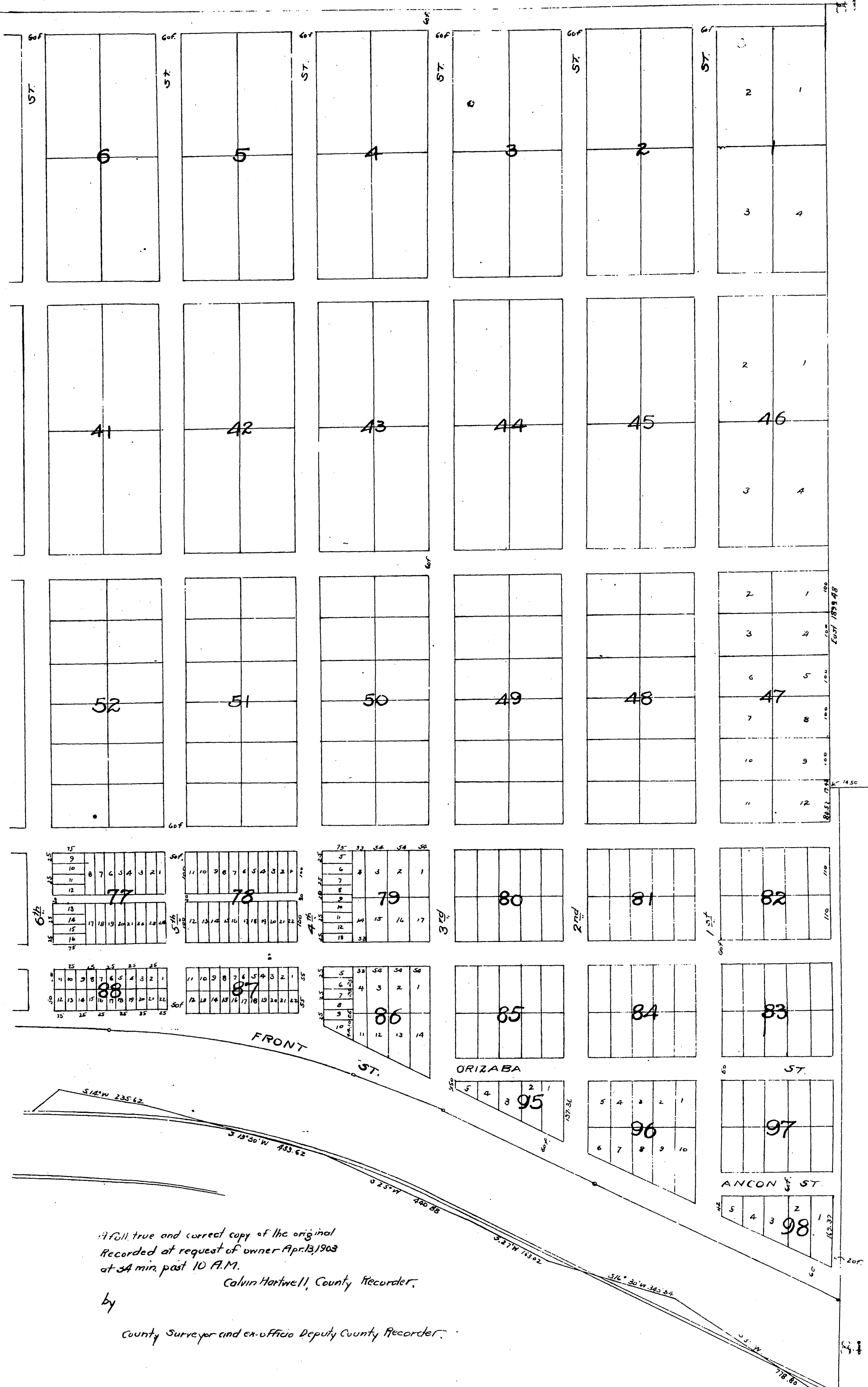
SITE 21A 56FF



Filed Sept. 19<sup>th</sup> 1882  
 A. W. Potts, Clerk.  
 By A. Norton Deputy.

FRONT LINE OF WHARF

Note :- Letters in blue denoted pencil lines on original.  
 Note :- Underlined letters are shown in blue on Mis. Rec.



A full, true and correct copy of the original  
 Recorded at request of owner Apr. 13, 1903  
 at 34 min. past 10 A.M.

Calvin Hartwell, County Recorder,

by

County Surveyor and ex-officio Deputy County Recorder.