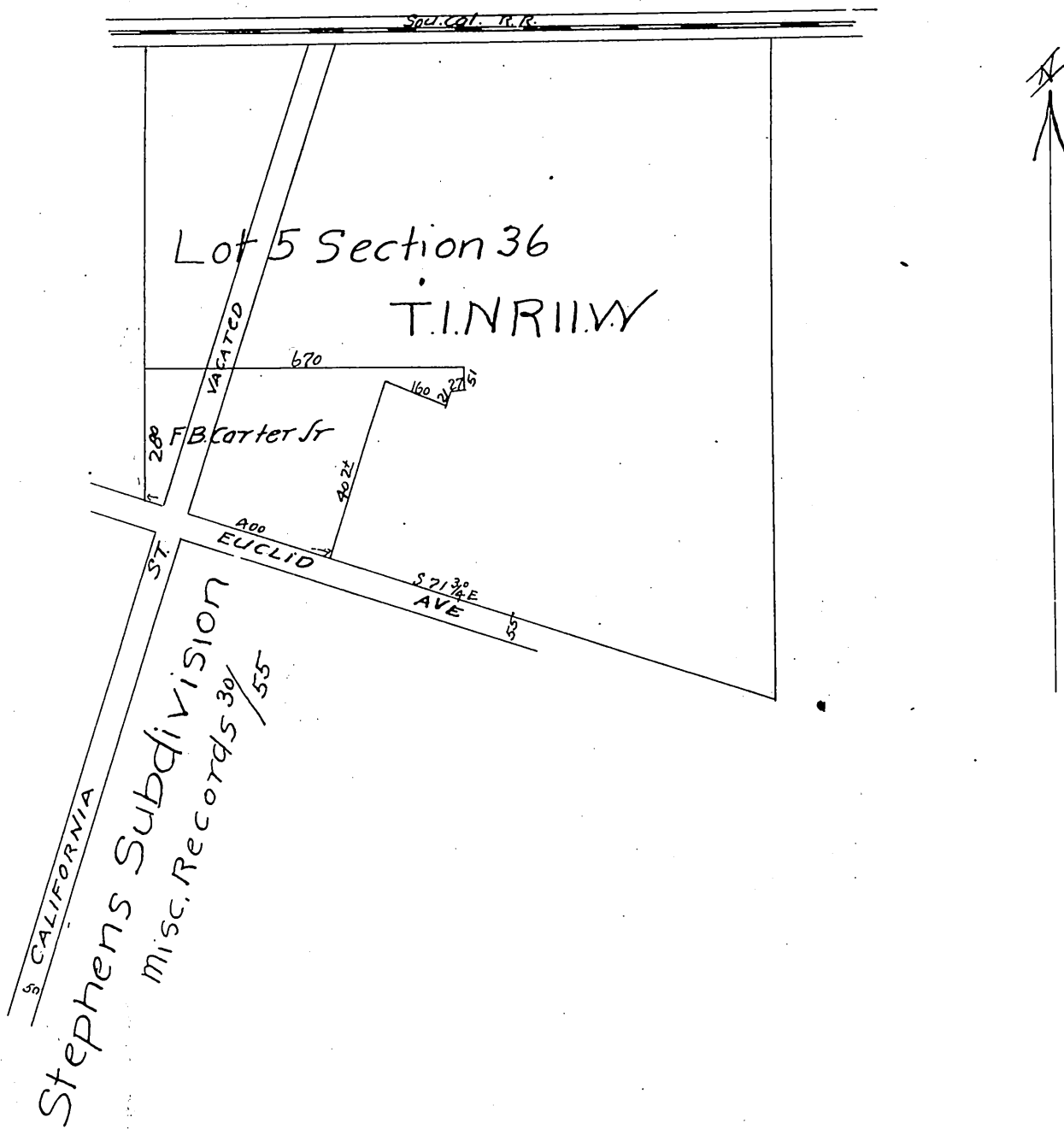




Plot
 Showing that part of
 California Street
 Vacated by order of Board of Supervisors
 Nov, 21st 1900



Road Book 6, page 191

Office of the Board of Supervisors
 of Los Angeles County, California
 Nov 21st 1900,

In re Vacacion of Portion of
 California St.
 Duarte Road District.

It is hereby ordered that all that portion of California street lying north of Euclid avenue as shown on a named map of Stephens subdivision of part of Lot 5, Beardslee