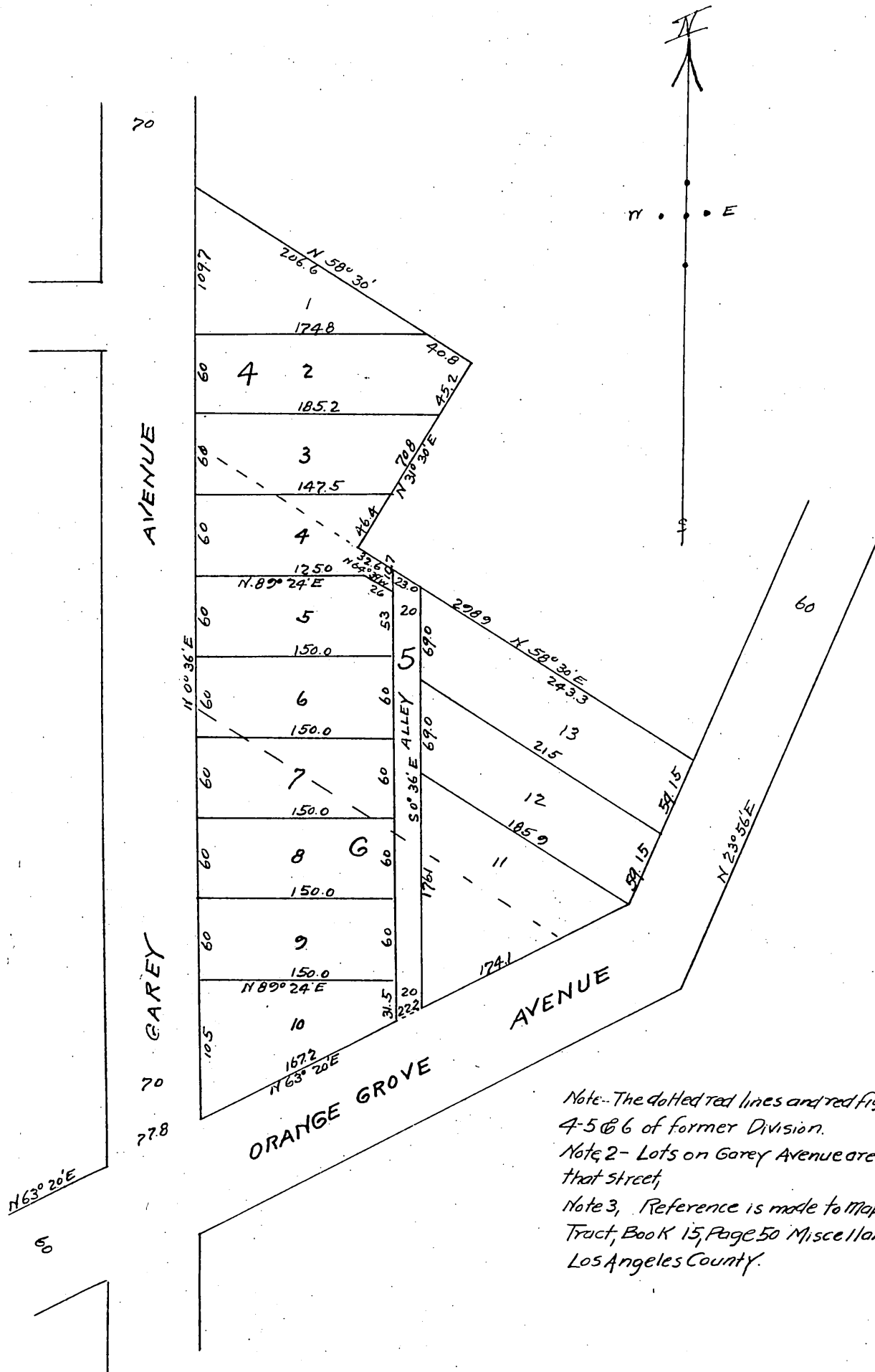


Map of
 F. L. Battle's Subdivision
 of Lots 4-5 & 6 in Block A of the Palomares Tract,
 in the City of Pomona, Los Angeles County Cali-
 fornia Surveyed and plotted by Frank H. Hyatt,
 Licensed Surveyor June 1903
 Scale 50 feet to inch,



Note- The dotted red lines and red figures show lots 4-5 & 6 of former Division.
 Note 2- Lots on Garey Avenue are at right angles to that street.
 Note 3, Reference is made to map of Palomares Tract, Book 15, Page 50 Miscellaneous Records of Los Angeles County.

I hereby dedicate for public use the alley shown by said map
 owner F. L. Battle,

Approved this 11th day of July 1903
 Geo P. Robinson,
 City Engineer of the city of Pomona.

a full true and correct copy of the original,
 recorded at request of owner July 16, 1903, at
 12. m,
 Calvin Hartnell Co Recorder,
 LEO, V. Young north h Co, Swt,