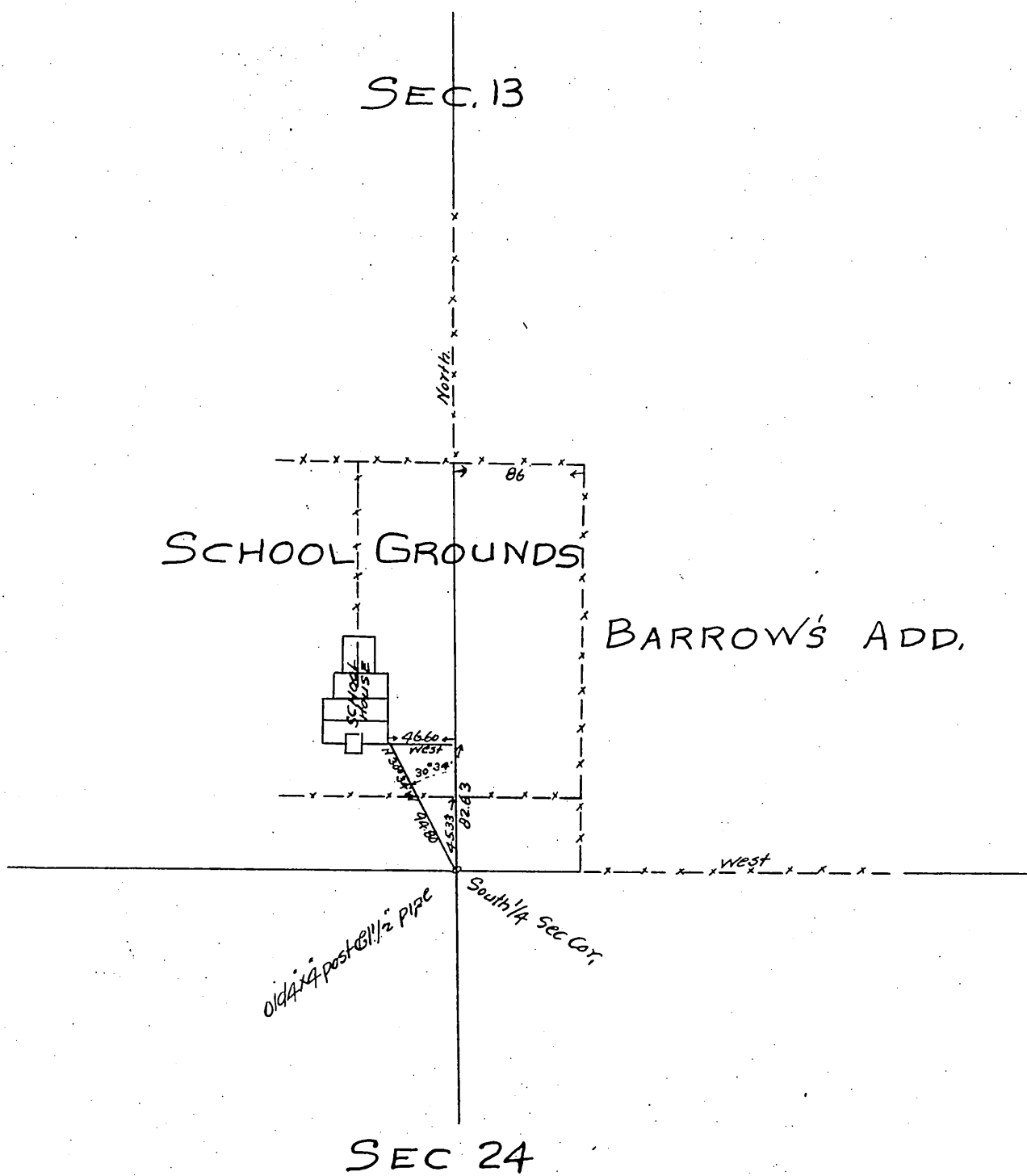


Sketch
 Showing location of School House
 in relation to the South 1/4 Section
 corner of Sec 13 T1 S, R. 14 W. S. B.M., as survey
 ed by E. D. Severance Surveyor
 Aug. 27th 1903
 Scale - 200ft = 1in



A full, true and correct copy of the original.
 Recorded at request of Lee A Mc Connell,
 Sept. 1903 At 37 min past 9 a.m.
 Calvin Hartnell, Co Recorder.
 By Leo. V. Youngworth Co Sur,