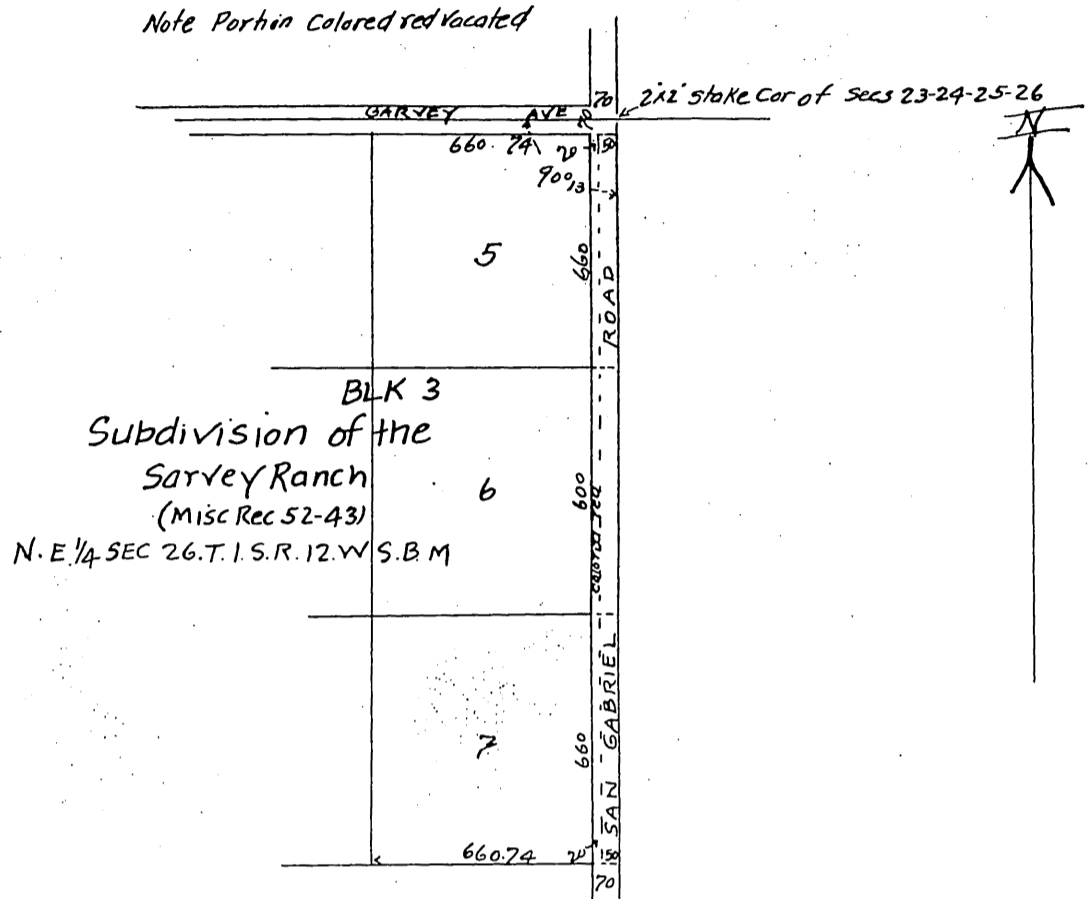


Map Showing revacation,  
 of 20 foot Strip of Land on West side  
 of San Gabriel County Road,  
 As per map recorded in Book 52 Page 43,  
 Misc. Records of  
 Los Angeles County  
 Scale 300' = 1"



Office of Board of Supervisors,  
 of Los Angeles County, California  
 March 23<sup>rd</sup> 1903,

• Intevacation of 20 foot Strip of Land on West  
 Side of San Gabriel County Road San Gabriel  
 Road District,  
 Road Book No 7 Page 98,

it is ordered that that certain 20 foot strip of land  
 in the San Gabriel County Road, on the west side thereof, beginning at Garvey Av  
 enue, and extending south 120 rods in San Gabriel Road District Los Angeles County  
 California be and the same is hereby vacated and abandoned, and the land therein contain  
 ed restored to acreage,

A full, true and correct copy of the original,  
 (Scale reduced to 500ft = 1in) Recorded at request  
 of C. H. Newcombe Sep 28, 1903 at 30 min.  
 past 3 P.m.

Colvin Hartnell, Co Recorder.  
 By Leo, V. Youngworth Co, Sur,