

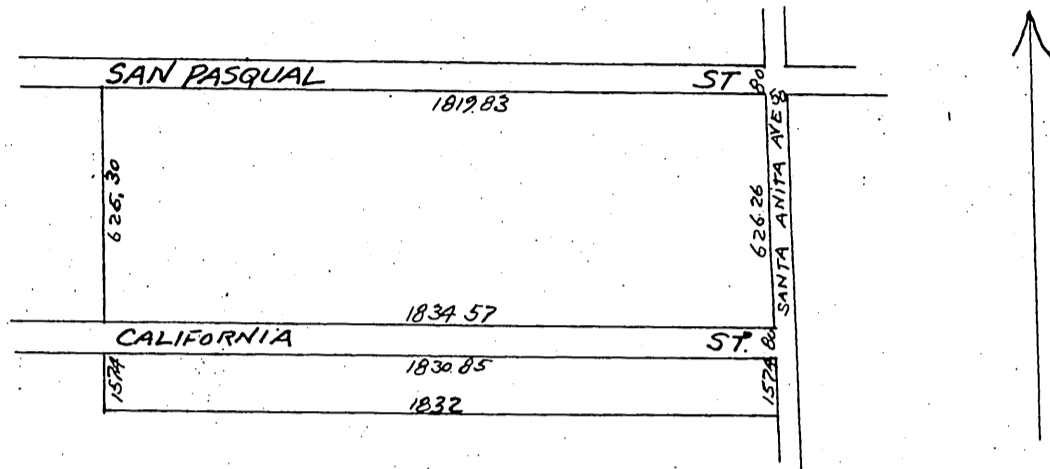
Scott's Addition to
Marceline,



39

After vacation of Lots and Ione Ave, as
per attached copy of the order by the Board
of Supervisors of Los Angeles County California.

Scale 200 ft = 1 in,



The Los Angeles Land Company a corporation hereby declares that it is the owner of the property shown on the annexed plat colored red and as such owner has caused the same to be platted and that it does hereby dedicate to the public use all streets as shown on said plat.

Los Angeles Land Company
By H. E. Huntington President
By E. T. Cook Secretary

Road Book 7 P 249
Office of the Board of Supervisors,
of Los Angeles County, California.
November 3 1903,

In re Vacation of Ione Avenue in Scott's Addition
to Marceline, San Gabriel Road District Petition
of Los Angeles Land Company et al,

it is ordered that Ione Avenue, extend-
ing from the South line of Pasqual Street to the North line of California Street in San Gabriel Road Dis-
trict, as shown on Map of Scott's Addition to Marceline recorded in Book 23, page 65, Miscellaneous
Records of Los Angeles County, California, be and the same is hereby vacated and abandoned and the
land therein contained restored to acreage,

A full, true and correct copy of the original.
Recorded at request of owner Nov. 27th 1903,
at 47 min past 9 A.M. Scale reduced to 500=1"

Calvin Hartnell, Co Recorder.
By Leo V. Young north Co Sur.