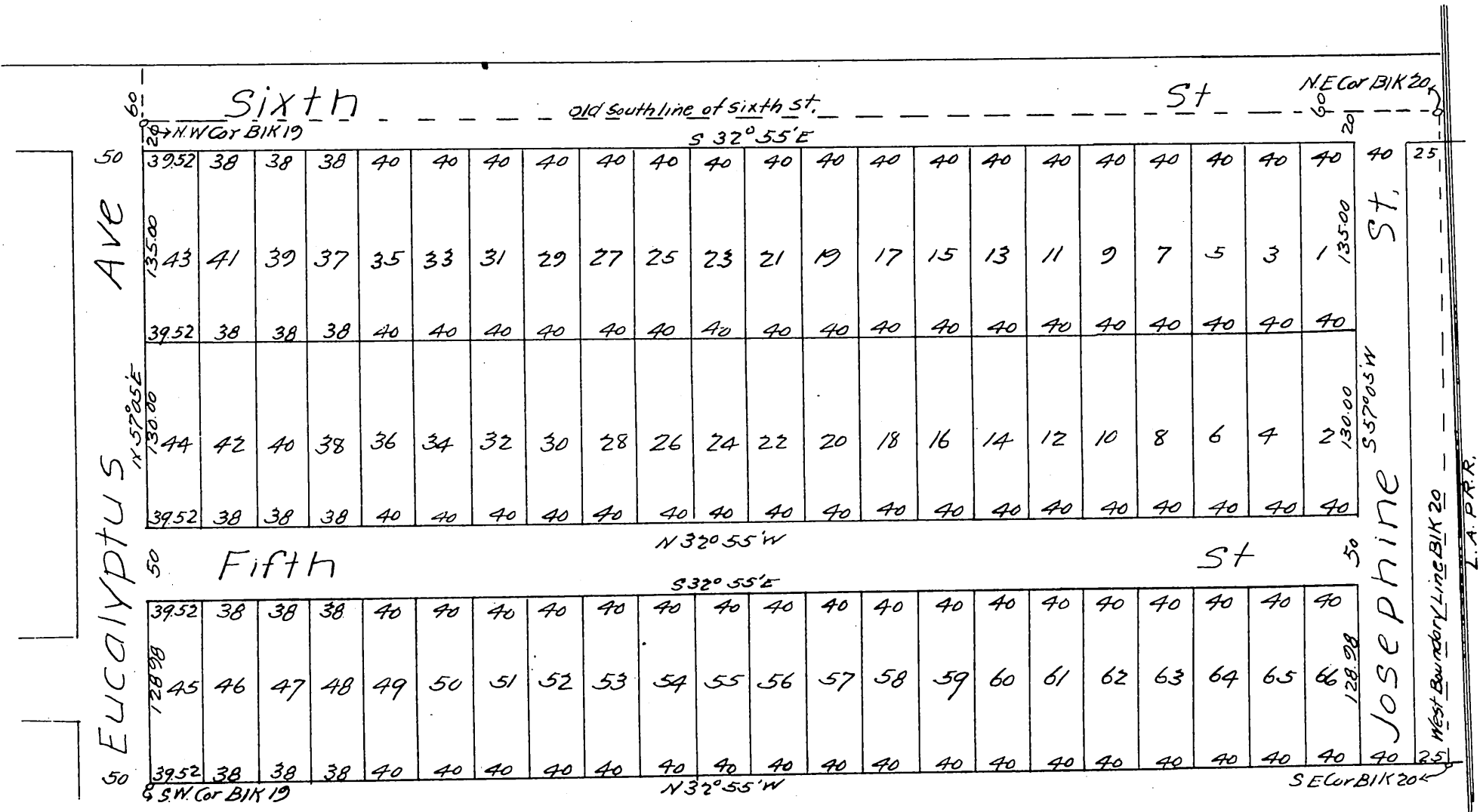
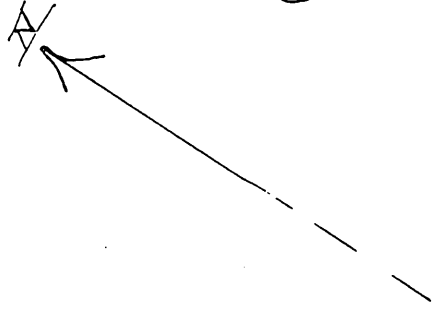


MAP

OF

Hadsall Tract

Being a subdivision
of Lots 19¹/₄ 20
of the Palms,
Los Angeles Co, Cal,
Surveyed Nov, 1903 by E. T. Wright C.E.,
scale 1" = 50'



and dedicate for public use the streets as shown on this map,

Proprietors { H. S. Hadsall,
 Melville E. Walker,