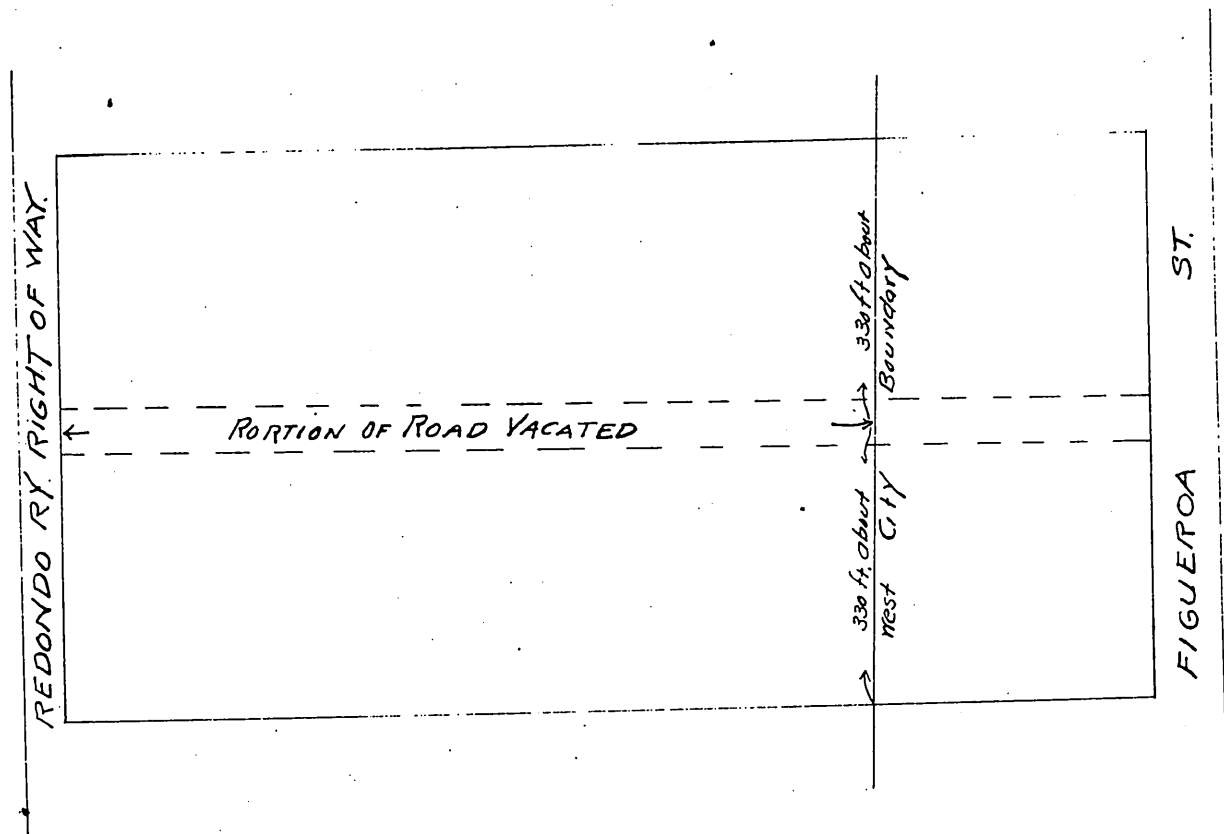


PLAT
 . OF
 N¹/₂ OF S.E. ¹/₄ OF NW ¹/₄
 OF
 SEC. 18,
 T2S. OF R13W,
 S.B.B.M.



Road Book 7 PA04
 Office of the Board of Supervisors
 of Los Angeles County, California.
 May 2, 1904,

In Re Vacation of a Certain Highway }
 in Green Meadows Road District, }
 Petition of Rachael Ware et al, }

it is ordered that all that cer-
 tain street, road, or highway located in the Green Meadows Road District, County