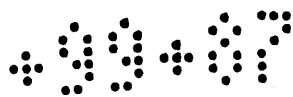
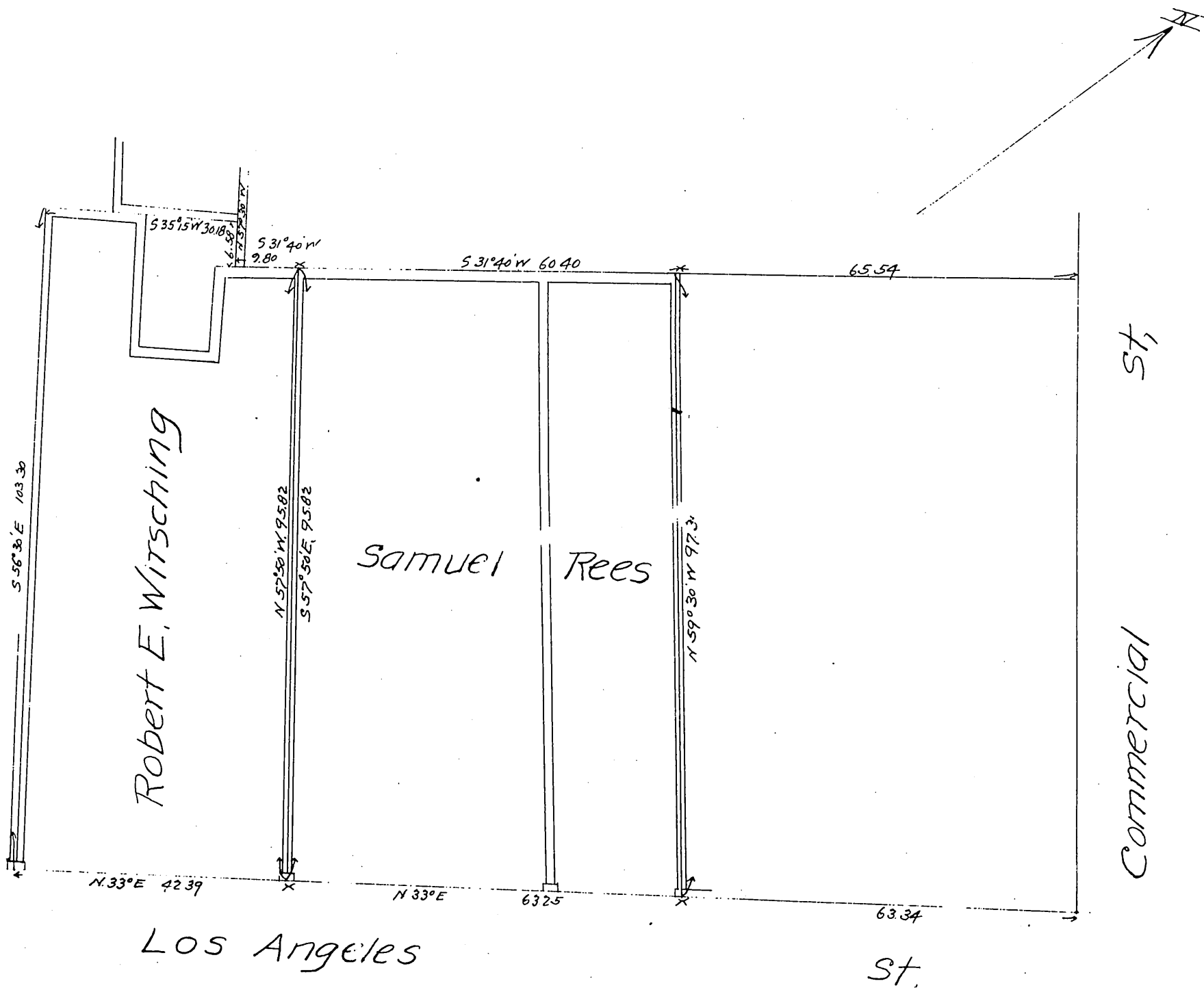


MAP



OF

Rees and Wirsching Lot
 On West Side Los Angeles St near Commercial St,
 Showing partition Line,
 Los Angeles City California,
 Surveyed by E.T. Wright June 27, 1904,
 Scale 1 in = 10 ft,



Proprietors { Samuel Rees,
 Robert E. Wirsching,

A full, true and correct copy of the original,
 recorded at request of R.E. Wirsching July 7
 1904 at 2 min past 11 A.M. (Scale reduced to
 20' = 1")
 Calvin Hartnell Co Recorder.
 By Leo V. Young worth Co Sur.