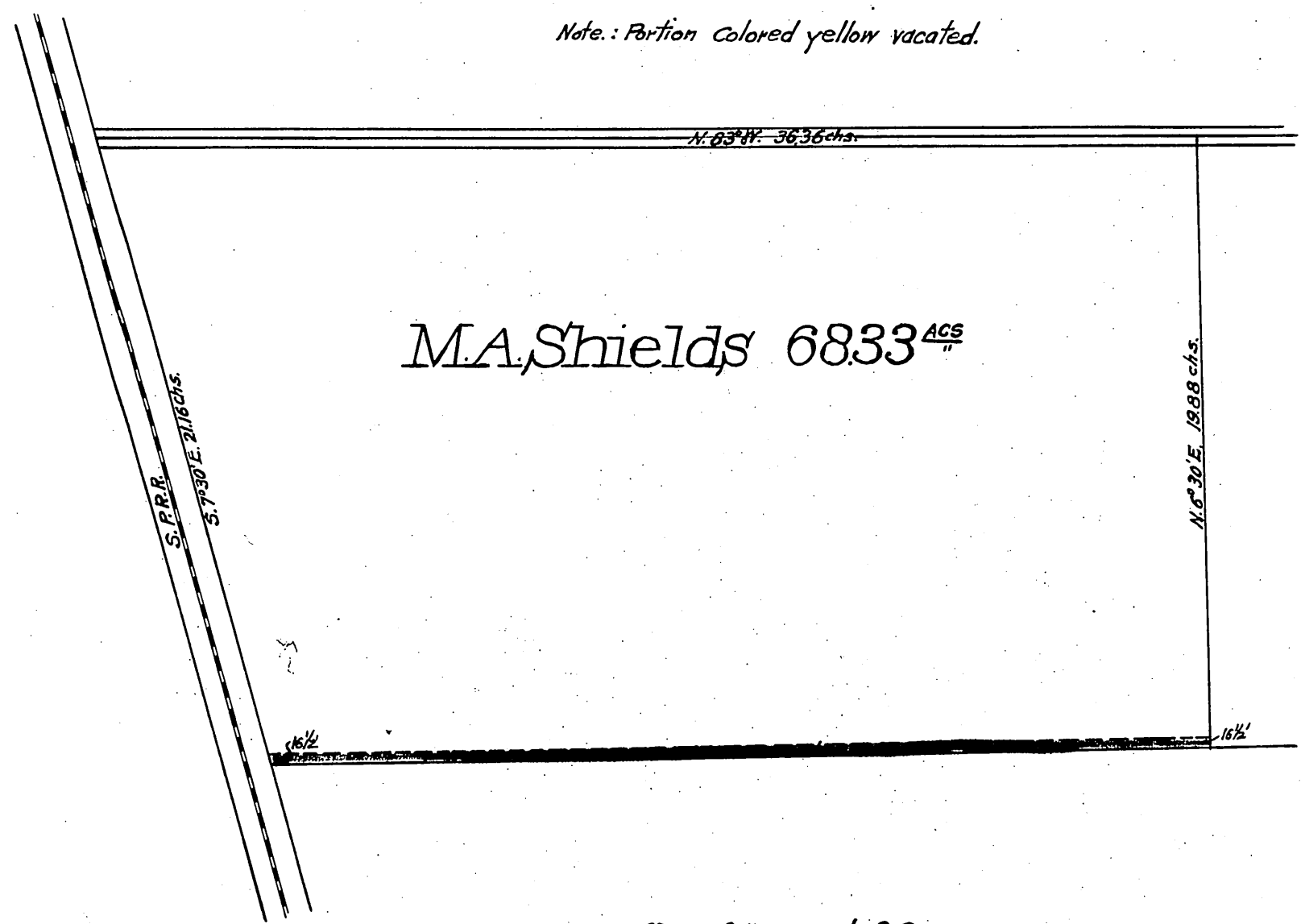


MAP 10745

M.A. Shields 68.33 Acre Allotment

as shown on a Map filed in District Court Case No 3590 after the vacation of a certain road defined by attached certified order of the Board of Supervisors of Los Angeles Co. Cal. Scale 5chs. = 1 inch.

Note: Portion Colored yellow vacated.



Office of the Board of Supervisors of Los Angeles County, California November 14, 1904.

In Re-vacation of a Road in the Lugo Home Tract Compton Road District Petition of C.H. Sessions et al.

It is ordered that that certain street or road situate in the Compton Road District, County of Los Angeles, State of California, described as follows, to-wit: "Part of that Tract of Land in the "Lugo Home Tract," in the Rancho San Antonio, County of Los Angeles, State of California, allotted to M.A. Shields by Decree in Partition filed in Case # 3590 of the District Court in and for said County, and marked on Map showing said partition, filed in said case # 3590 "M.A. Shields 68.33 Ac" The above Road being the South 16 1/2 feet granted to the Board of Supervisors of Los Angeles County, for road, by a deed recorded in Book 103 Page 203 of Deeds" - be and the same is hereby vacated and abandoned, and the land therein contained restored to acreage.

Recorded at request of C.H. Sessions Nov. 18 1904 at 50 min. past 11 A.M.

Comp H. C. J.