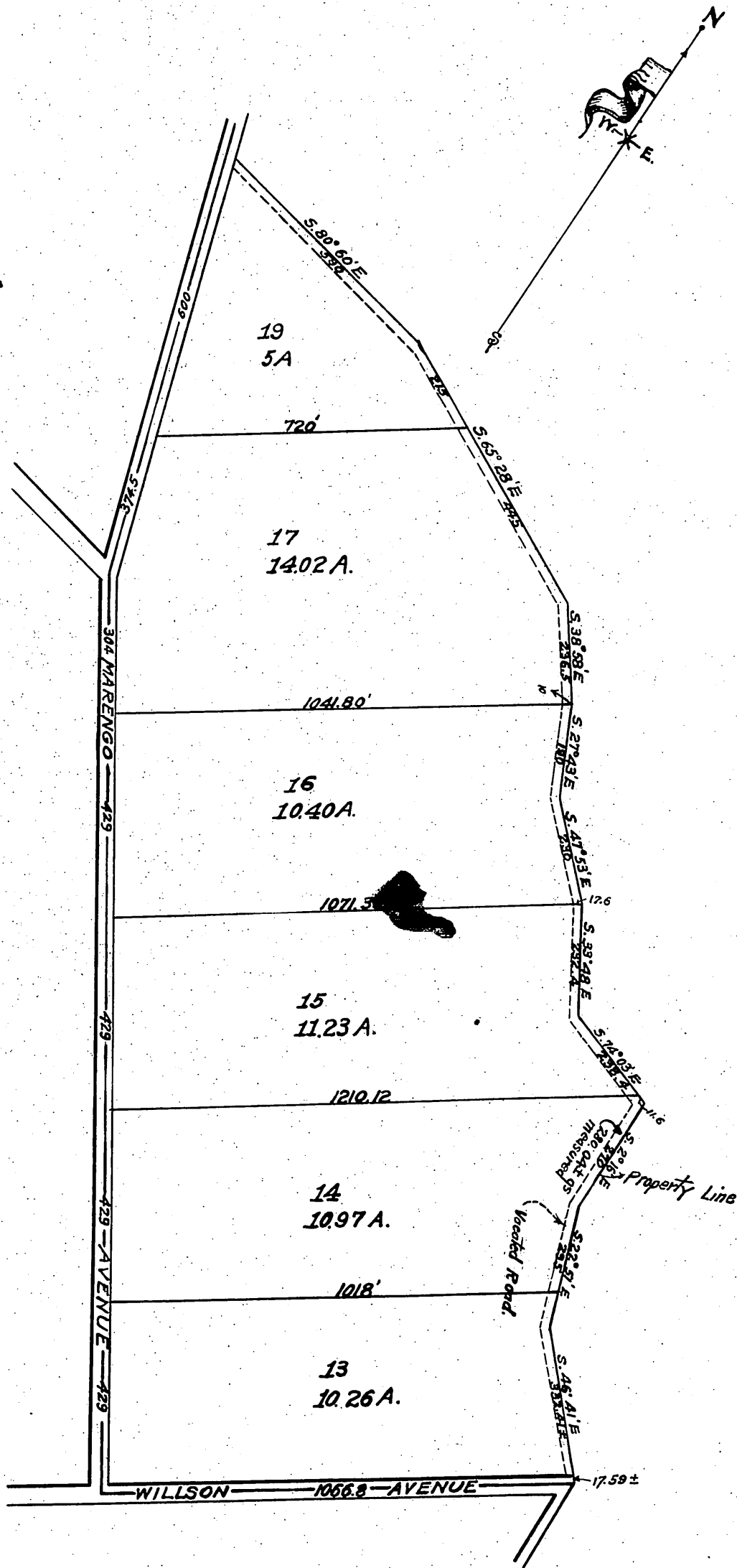


8.
±7
512

MAP

Showing vacation of Road on NE Boundary of Lots 13, 14, 15, 16, 17, and 19, of the Subdivision of a Portion of the Los Robles Rancho Misc. Records Book 42, Page 83 Los Angeles Co., Cal. Chas. Forman Jr. Surveyor.
Scale 300' = 1"



Camp
H. C. W.



Office of the Board of Supervisors
of Los Angeles County, California
September 19, 1904.

In Revacation of a Road on the N.E. Boundary
of Lots 13, 14, 15, 16, 17, and 19, of a Portion of Subdi-
vision of Los Robles Rancho, in Alhambra Road }
District: Petition of F.D. Hudson et al.

It is ordered that all that portion of that
certain road running along the wash on the Northeasterly boundary of lots 13, 14, 15, 16, 17,
and 19, of a Portion of subdivision of Los Robles Rancho as recorded in Book 42, page
83, Miscellaneous Records of Los Angeles County, said Road being situate in the Alhambra
Road District County of Los Angeles, State of California, be and the same is hereby
vacated and abandoned and the land therein contained restored to acreage,

Recorded at request of F. D. Hudson Nov. 22
1904 at 53 Min. past 1 P.M.

Comp
H. C. J.