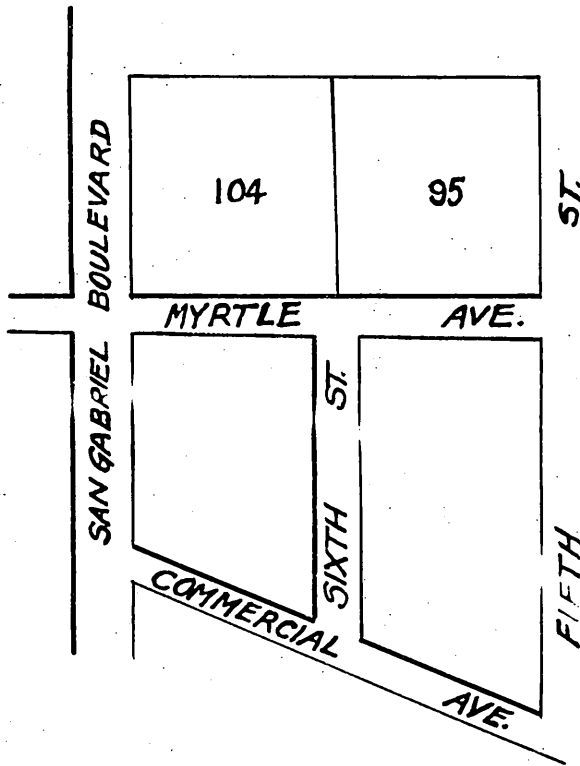


# Replat

OF A PORTION OF

## East San Gabriel

As per Map recorded in Book 21 Page 79 of Miscellaneous Records, Los Angeles County showing location of Myrtle Ave. & Sixth St. as vacated by Board of Supervisors December 12<sup>th</sup> 1904.



Office of the Board of Supervisors  
of Los Angeles County, California.  
December 12, 1904.

*In Re Vacation of Myrtle Avenue and Sixth Street,  
San Gabriel Road District: Petition of Jennie D.  
Overton et al.*

it is ordered that the following described public highways situate in the County of Los Angeles, State of California, to-wit:—"Myrtle Avenue, in East San Gabriel, beginning at the Easterly line of San Gabriel Boulevard; thence Easterly six-hundred and Sixty (660) feet to the Westerly line of Fifth Street;" Sixth Street, in said East San Gabriel, from the Southerly line of Myrtle Avenue to the Northerly line of Commercial Avenue, according to a Map of Re-plat of a portion of East San Gabriel, as the same is recorded in the office of the County Recorder of said County of Los Angeles, in Book 21 of Miscellaneous Records, at Page 79" be and the same are hereby vacated and abandoned and the land therein contained restored to acreage.

Recorded at request of U. E. D. Overton Dec.  
23, 1904. (Scale reduced to 200'-1") at 11 min-  
past 11 A.M.