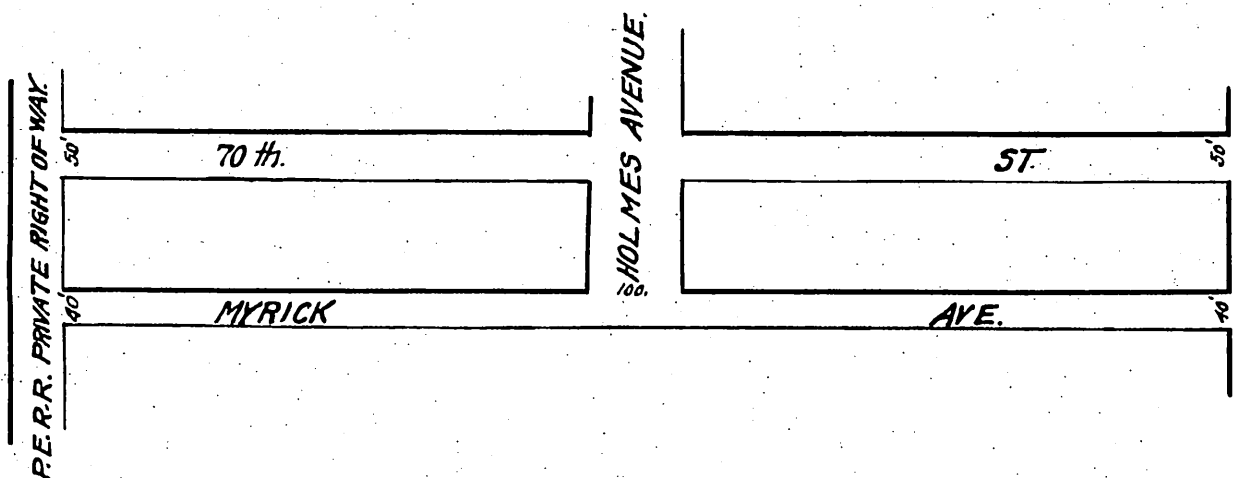


15

16

North Half +107+10  
of the  
SE<sup>1</sup>/<sub>4</sub> of the SE<sup>1</sup>/<sub>4</sub> of Sec 21 T 2 S R 13 W  
S.B.M.



Office of the Board of Supervisors  
of Los Angeles County, California.  
December 12, 1904,

*In re Vacation of Myrick Avenue, Florence Road }  
District Petition of Wm R. Roney et. al.*

it is ordered that the following described public highway situate in the County of Los Angeles, State of California, to wit:—  
The Street known as Myrick Avenue, extending eastward from right-of-Way of the Pacific Electric Railway to the Eastern boundary line of Section 21, T. 2. S. R. 13. W. S. B. M. and forming, with said Section line, the Northern and Eastern boundaries of the S. E. 1/4 of the S. E. 1/4 of Section 21, T. 2. S. R. 13. W. S. B. M. "be and the same is hereby vacated and abandoned, and the land therein contained restored to acreage.

Recorded at request of Wm R. Roney Dec. 31.  
1904 at 44 min past 2. P.M.

*Comp  
H.C.F.*