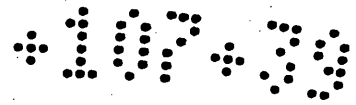
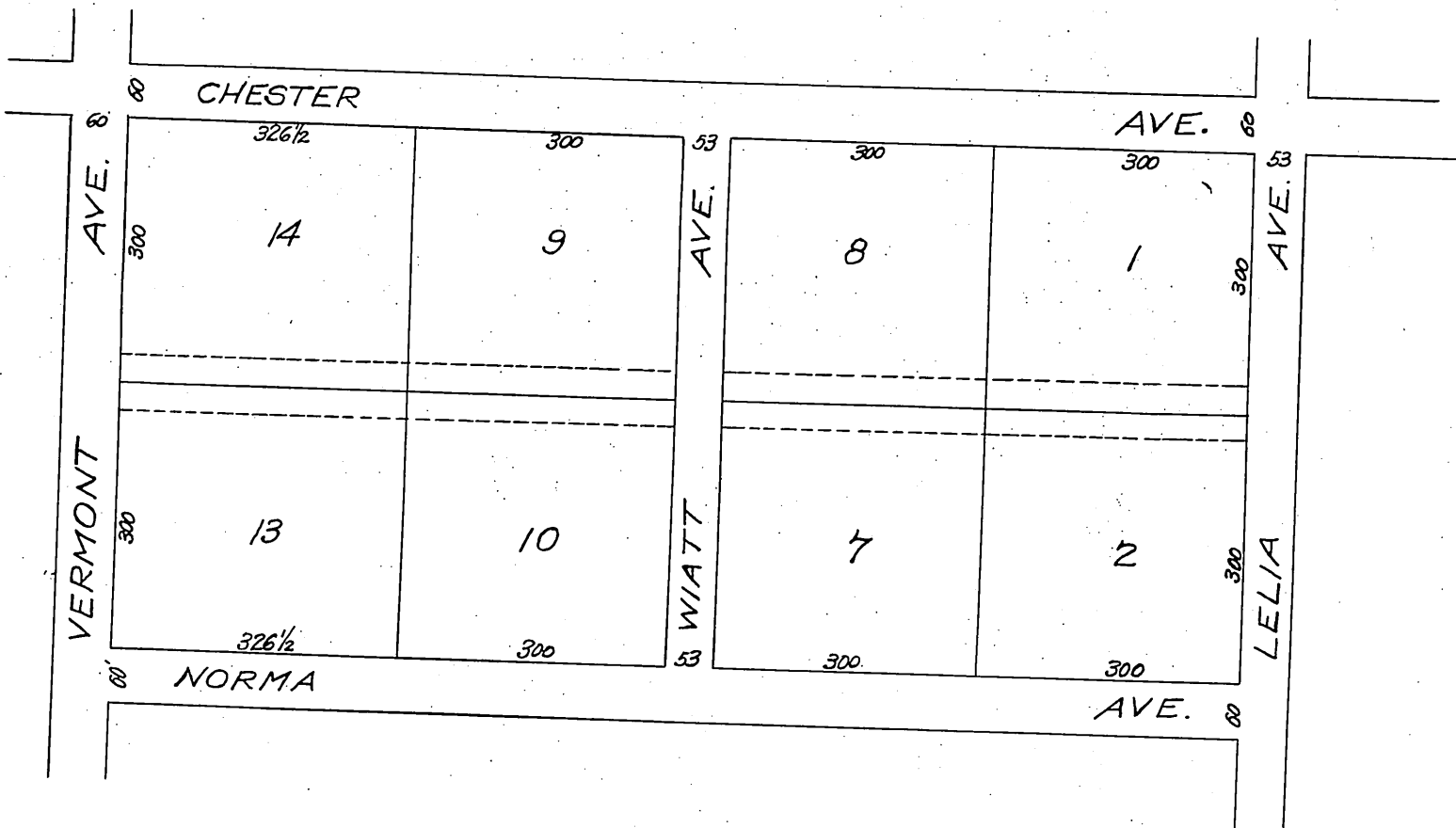


Map of a portion of
Edna Park.



After vacation of Montgomery Avenue.
 by order of the Board of Supervisors.



Office of the Board of Supervisors
 of Los Angeles County, California
 April 4, 1905.

In re-vacation of Montgomery Street }
 Green Meadows Road District }

It is ordered that the public highway situate in the Green Meadows Road District, County of Los Angeles, State of California, described as follows, to-wit: Montgomery Street, in Edna Park, as same is recorded in Book 26, page 12 of Miscellaneous Records of Los Angeles Co, said Street being 60 feet wide and extending east from Vermont Avenue to Lelia Avenue, or Redondo R.R. be and the same is hereby vacated and abandoned and the land therein contained restored to acreage.

Recorded at request of P.J. Wilson Apr.
 10, 1905 at 3 min. past 2 P.M.

Comp
 H.C.T.