

1872-20-20-13  
4-18-86



MAP OF THE

# Baxter Tract.

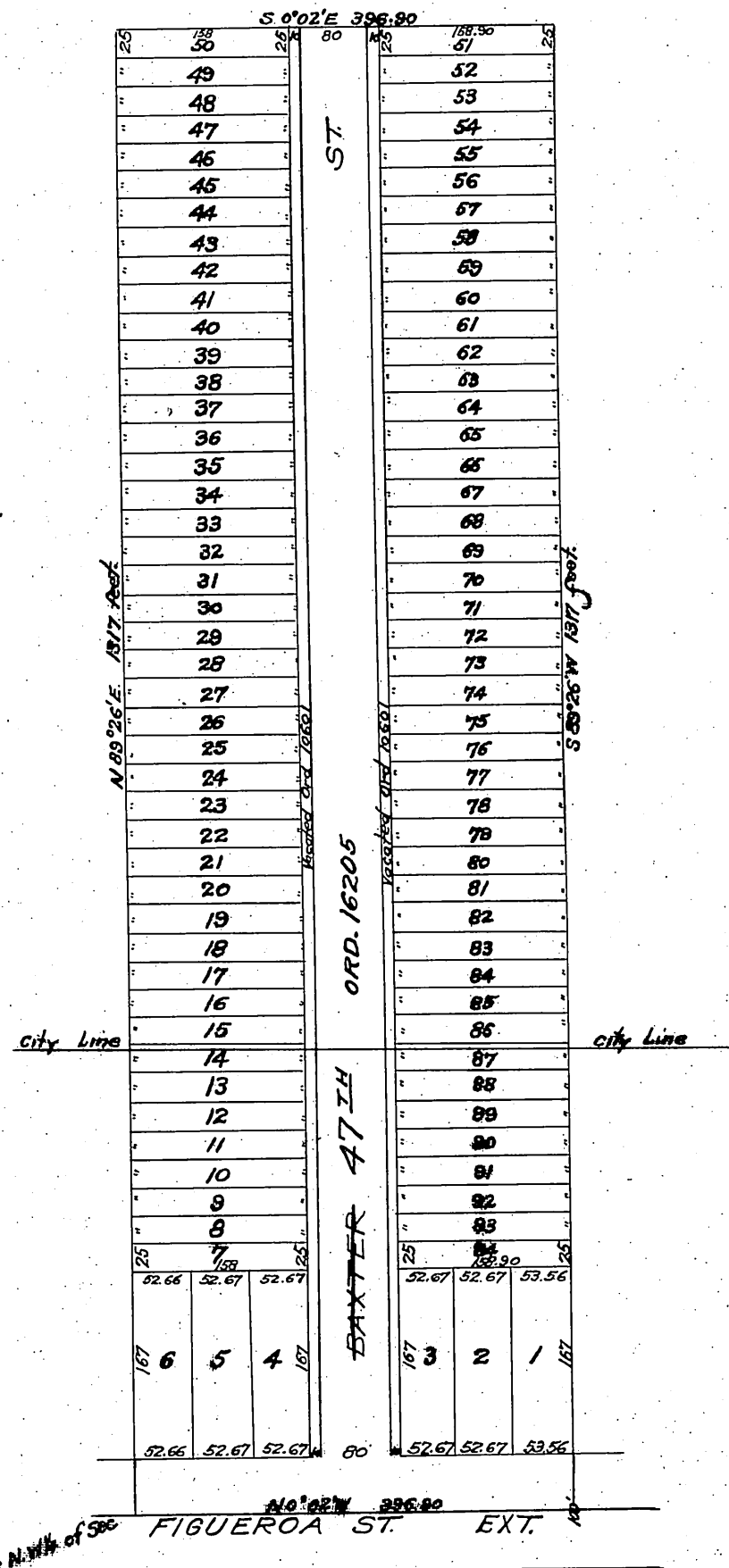
Los Angeles County, Cal.

Surveyed Dec. 1888,

by Geo. E. Pillsbury.

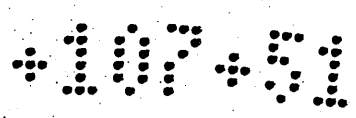
Scale 50 ft. to 1 inch.

Note: The Baxter Tract is a subdivision of the southerly 12 Acres of the N.E. 1/4 of the N.W. 1/4 of Sec. 18.T.2.S.R.13W.S.B.M.



SEC. 18 of N.E. 1/4 of the N.W. 1/4 of Sec. 18.T.2.S.R.13W.S.B.M.

BAXTER ST. CHANGED to 47TH ST. IN CITY ORD. 13542. For Resub. of portion of this tract see D.M. 2423-209



Office of the Board of Supervisors  
of Los Angeles County, California  
October 31, 1904.

In re-vacation of a part of Baxter Street,  
Green Meadows Road District, Petition  
of Ella I. Mitchell et al }

It is ordered that all that  
portion of that certain street situate in the Green Meadows Road District, County of Los  
Angeles, State of California, described as follows, to-wit: "The North ten (10) feet and the  
South Ten (10) feet of Baxter Street, as said street is shown on a Map of the Baxter Tract  
recorded in Book 37 at page 32 of the Miscellaneous Records of Los Angeles County, there-  
by diminishing the width of said Street from 80 feet to 60 feet" be and the same is here  
by vacated and abandoned and the land therein contained restored to acreage.

Recorded at request of Young and Addams Apr.  
29, 1905 at 56 min. past 11 A. M. (Scale reduced to  
150'=1').