

55

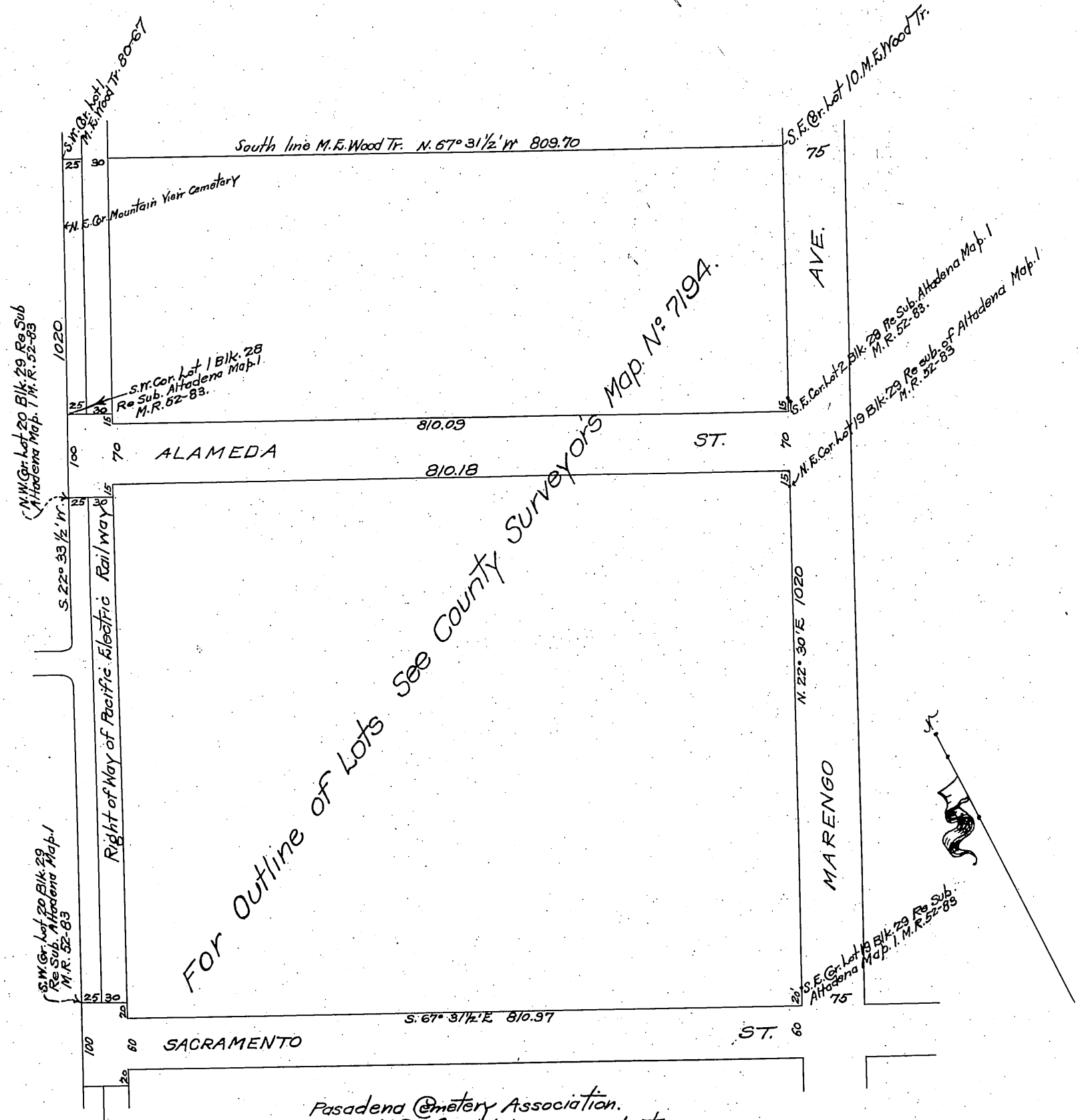
# MOUNTAIN VIEW CEMETERY ADDITION.

Being Lots 19<sup>th</sup> & 20, Block 29, the south 1/2 of Lots 1 & 2,  
 Block 28, of Re-Sub. of certain blocks of Alameda Map 1  
 as recorded in Book 52, page 83, Miscellaneous Records of  
 Los Angeles County, and vacated portions of Alameda  
 Street & Sacramento Street adjoining said lots.

Boundary surveyed April, 1905, by

T. D. Allin.

Scale 1 Inch = 40 feet.



Pasadena Cemetery Association.  
 By J. R. Giddings President.  
 " Jennie L. Giddings Secretary.

Recorded at request of J.R. Giddings  
 May 12, 1905 at 42 min. past 11 A.M.  
 (Scale reduced to 150' = 1")

Vac of Alameda St See D: 12-54 P. 12 11-58