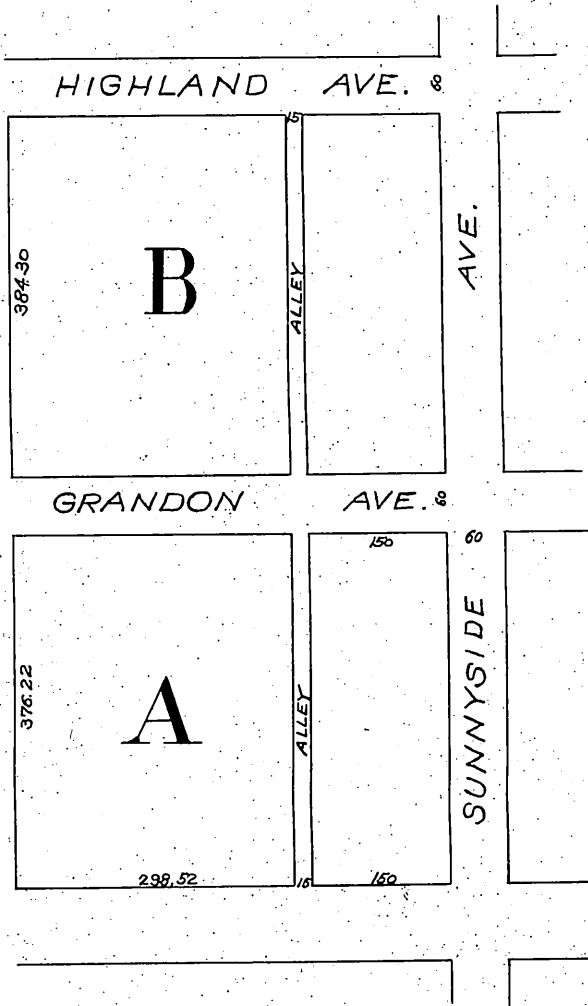


Map

Showing proposed vacation of Alleys in  
Blocks A & B and of Grandon Ave. in Grand  
View Tract as of record Mis. Rec. 29, P. 96.  
Los Angeles Co., Cal.



Office of the Board of Supervisors  
of Los Angeles County, California.  
Monday, June 26, 1905.

In re Vacation of a portion of Grandin Avenue }  
and an Alley in Sierra Madre Road District. }

It is ordered that the following described public highway and alley -  
situate, lying and being in the Sierra Madre Road District, County of Los Angeles, State  
of California, to-wit: Grandin Avenue, from Sunnyside Avenue to property now own-  
ed by Pierce and lying between Blocks "A" and "B" of the Grand View Tract. Also, the  
Alley in said Blocks "A" and "B," from Central Avenue to Highland Avenue, - be and the same  
are hereby vacated and abandoned and the land therein contained restored to acreage.

Recorded at request of Lula N. Hinton Jun.  
28, 1905 at 35 min. past 2. P.M. (Scale reduced  
to 200' = 1").